

Datasheet for ABIN2178742
anti-PTGFR antibody (AA 121-220)



[Go to Product page](#)

1 Image

Overview

Quantity:	100 µL
Target:	PTGFR
Binding Specificity:	AA 121-220
Reactivity:	Human
Host:	Rabbit
Clonality:	Polyclonal
Conjugate:	This PTGFR antibody is un-conjugated
Application:	Western Blotting (WB), Immunofluorescence (Paraffin-embedded Sections) (IF (p)), Immunohistochemistry (Paraffin-embedded Sections) (IHC (p)), Immunofluorescence (Cultured Cells) (IF (cc)), ELISA, Immunocytochemistry (ICC), Immunohistochemistry (Frozen Sections) (IHC (fro))

Product Details

Immunogen:	KLH conjugated synthetic peptide derived from human PTGFR
Isotype:	IgG
Cross-Reactivity:	Human
Predicted Reactivity:	Cow,Pig,Horse
Purification:	Purified by Protein A.

Target Details

Target:	PTGFR
---------	-------

Target Details

Alternative Name:	PTGFR (PTGFR Products)
Background:	<p>Synonyms: FP, Prostaglandin F2-alpha receptor, PGF receptor, PGF2-alpha receptor, Prostanoid FP receptor, PTGFR</p> <p>Background: Receptor for prostaglandin F2-alpha (PGF2-alpha). The activity of this receptor is mediated by G proteins which activate a phosphatidylinositol-calcium second messenger system. Initiates luteolysis in the corpus luteum (By similarity). Isoforms 2 to 7 do not bind PGF2-alpha but are proposed to modulate signaling by participating in variant receptor complexes, heterodimers between isoform 1 and isoform 5 are proposed to be a receptor for prostamides including the synthetic analog bimatoprost.</p>
Gene ID:	5737
UniProt:	P43088

Application Details

Application Notes:	WB 1:300-5000 ELISA 1:500-1000 IHC-P 1:200-400 IHC-F 1:100-500 IF(IHC-P) 1:50-200 IF(IHC-F) 1:50-200 IF(ICC) 1:50-200 ICC 1:100-500
Restrictions:	For Research Use only

Handling

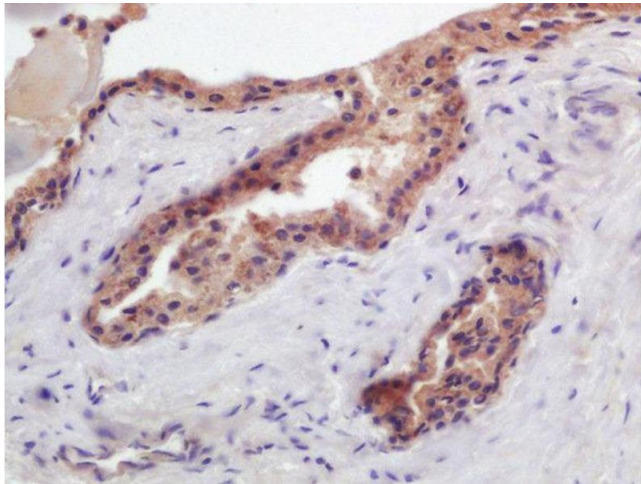
Format:	Liquid
Concentration:	1 µg/µL
Buffer:	0.01M TBS(pH 7.4) with 1 % BSA, 0.02 % Proclin300 and 50 % Glycerol.
Preservative:	ProClin
Precaution of Use:	This product contains ProClin: a POISONOUS AND HAZARDOUS SUBSTANCE, which should be handled by trained staff only.
Storage:	4 °C,-20 °C

Handling

Storage Comment: Shipped at 4°C. Store at -20°C for one year. Avoid repeated freeze/thaw cycles.

Expiry Date: 12 months

Images



Immunohistochemistry (Paraffin-embedded Sections)

Image 1. Formalin-fixed and paraffin embedded human prostate carcinoma labeled with Anti-PTGFR Polyclonal Antibody, Unconjugated (ABIN2178742) at 1:200 followed by conjugation to the secondary antibody and DAB staining