

Datasheet for ABIN2178755
anti-RAB20 antibody (AA 131-234)

2 Images

[Go to Product page](#)

Overview

Quantity:	100 µL
Target:	RAB20
Binding Specificity:	AA 131-234
Reactivity:	Rat
Host:	Rabbit
Clonality:	Polyclonal
Conjugate:	This RAB20 antibody is un-conjugated
Application:	ELISA, Immunofluorescence (Cultured Cells) (IF (cc)), Immunofluorescence (Paraffin-embedded Sections) (IF (p)), Immunohistochemistry (Paraffin-embedded Sections) (IHC (p)), Immunohistochemistry (Frozen Sections) (IHC (fro))

Product Details

Immunogen:	KLH conjugated synthetic peptide derived from human Rab20
Isotype:	IgG
Cross-Reactivity:	Rat
Predicted Reactivity:	Human, Mouse, Dog, Cow, Pig, Horse, Chicken
Purification:	Purified by Protein A.

Target Details

Target:	RAB20
---------	-------

Target Details

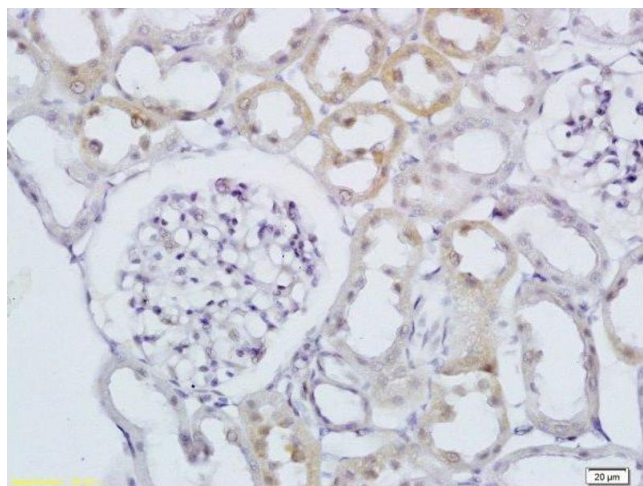
Alternative Name:	Rab20 (RAB20 Products)
Background:	Synonyms: Ras-related protein Rab-20, RAB20 Background: Plays a role in apical endocytosis/recycling. Plays a role in the maturation and acidification of phagosomes that engulf pathogens, such as S.aureus and M.tuberculosis. Plays a role in the fusion of phagosomes with lysosomes.
Gene ID:	55647
UniProt:	Q9NX57

Application Details

Application Notes:	ELISA 1:500-1000 IHC-P 1:200-400 IHC-F 1:100-500 IF(IHC-P) 1:50-200 IF(IHC-F) 1:50-200 IF(ICC) 1:50-200
Restrictions:	For Research Use only

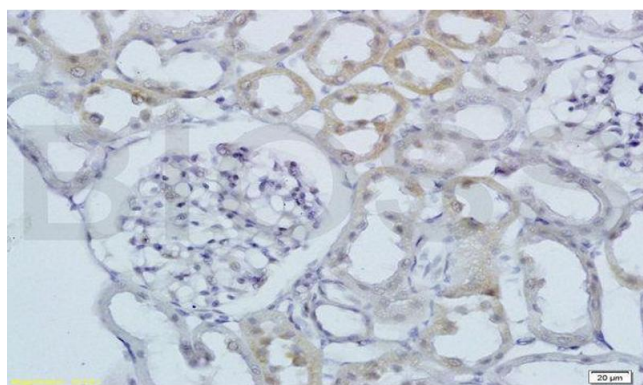
Handling

Format:	Liquid
Concentration:	1 µg/µL
Buffer:	0.01M TBS(pH 7.4) with 1 % BSA, 0.02 % Proclin300 and 50 % Glycerol.
Preservative:	ProClin
Precaution of Use:	This product contains ProClin: a POISONOUS AND HAZARDOUS SUBSTANCE, which should be handled by trained staff only.
Storage:	4 °C, -20 °C
Storage Comment:	Shipped at 4°C. Store at -20°C for one year. Avoid repeated freeze/thaw cycles.
Expiry Date:	12 months



Immunohistochemistry (Paraffin-embedded Sections)

Image 1. Formalin-fixed and paraffin embedded rat kidney labeled with Anti RAB20 Polyclonal Antibody, Unconjugated at 1:200 followed by conjugation to the secondary antibody and DAB staining



Immunohistochemistry (Paraffin-embedded Sections)

Image 2. Formalin-fixed and paraffin embedded rat kidney labeled with Anti RAB20 Polyclonal Antibody, Unconjugated at 1:200 followed by conjugation to the secondary antibody and DAB staining

bs-6178R Anti-RAB20 Polyclonal Antibody

Tissue/cell: rat kidney tissue; 4% Paraformaldehyde-fixed and paraffin-embedded
Antigen retrieval: citrate buffer (0.01M, pH 6.0). Boiling bathing for 15min
Block endogenous peroxidase by 3% Hydrogen peroxide for 30min
Blocking buffer (normal goat serum) at 37 °C for 20 min
Incubation: Anti-RAB20 Polyclonal Antibody, Unconjugated(bs-6178R) 1:200, overnight at 4 °C,
followed by conjugation to the secondary antibody and DAB staining