

Datasheet for ABIN2179210

anti-Sialoadhesin/CD169 antibody (AA 851-950)

5 Images

[Go to Product page](#)

Overview

Quantity:	100 µL
Target:	Sialoadhesin/CD169 (SIGLEC1)
Binding Specificity:	AA 851-950
Reactivity:	Human, Rat
Host:	Rabbit
Clonality:	Polyclonal
Conjugate:	This Sialoadhesin/CD169 antibody is un-conjugated
Application:	Flow Cytometry (FACS), ELISA, Immunohistochemistry (Frozen Sections) (IHC (fro)), Immunofluorescence (Paraffin-embedded Sections) (IF (p)), Immunofluorescence (Cultured Cells) (IF (cc)), Immunocytochemistry (ICC), Immunohistochemistry (Paraffin-embedded Sections) (IHC (p))

Product Details

Immunogen:	KLH conjugated synthetic peptide derived from human Sialoadhesin
Isotype:	IgG
Cross-Reactivity:	Human, Rat
Purification:	Purified by Protein A.

Target Details

Target:	Sialoadhesin/CD169 (SIGLEC1)
Alternative Name:	Sialoadhesin (SIGLEC1 Products)

Target Details

Background:	Synonyms: SN, CD169, SIGLEC-1, dJ1009E24.1, Sialoadhesin, Sialic acid-binding Ig-like lectin 1, SIGLEC1 Background: Acts as an endocytic receptor mediating clathrin dependent endocytosis. Macrophage-restricted adhesion molecule that mediates sialic-acid dependent binding to lymphocytes, including granulocytes, monocytes, natural killer cells, B-cells and CD8 T-cells. Preferentially binds to alpha-2,3-linked sialic acid (By similarity). Binds to SPN/CD43 on T-cells (By similarity). May play a role in hemopoiesis.
-------------	--

Gene ID:	6614
----------	------

UniProt:	Q9BZZ2
----------	------------------------

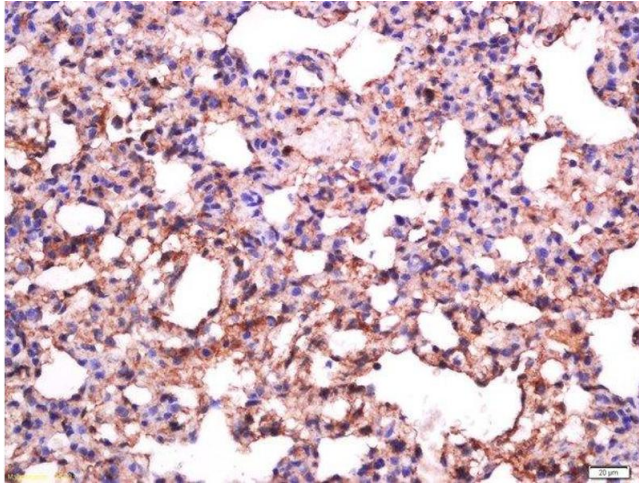
Application Details

Application Notes:	ELISA 1:500-1000 FCM 1:20-100 IHC-P 1:200-400 IHC-F 1:100-500 IF(IHC-P) 1:50-200 IF(IHC-F) 1:50-200 IF(ICC) 1:50-200 ICC 1:100-500
--------------------	---

Restrictions:	For Research Use only
---------------	-----------------------

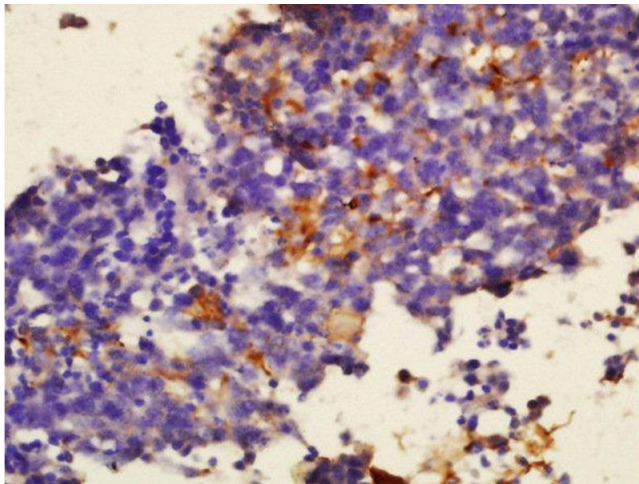
Handling

Format:	Liquid
Concentration:	1 µg/µL
Buffer:	0.01M TBS(pH 7.4) with 1 % BSA, 0.02 % Proclin300 and 50 % Glycerol.
Preservative:	ProClin
Precaution of Use:	This product contains ProClin: a POISONOUS AND HAZARDOUS SUBSTANCE, which should be handled by trained staff only.
Storage:	4 °C, -20 °C
Storage Comment:	Shipped at 4°C. Store at -20°C for one year. Avoid repeated freeze/thaw cycles.
Expiry Date:	12 months



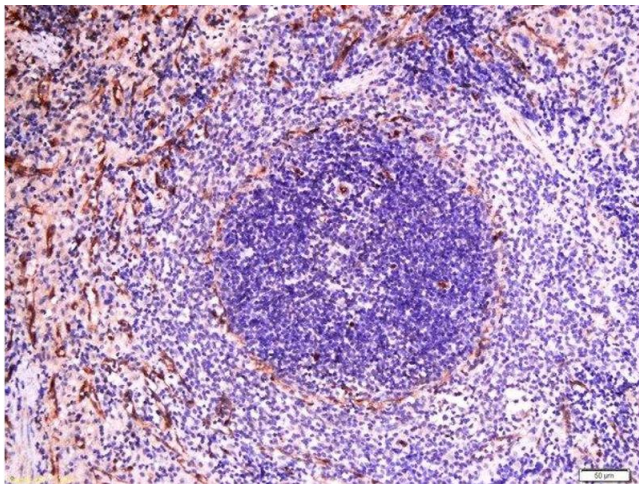
Immunohistochemistry (Paraffin-embedded Sections)

Image 1. Formalin-fixed and paraffin embedded rat lung labeled with Anti-Sialoadhesin Polyclonal Antibody, Unconjugated at 1:500 followed by conjugation to the secondary antibody and DAB staining



Immunohistochemistry (Paraffin-embedded Sections)

Image 2. Formalin-fixed and paraffin embedded human glioma tissue labeled with Anti-Sialoadhesin Polyclonal Antibody, Unconjugated (ABIN2179210) at 1:300 followed by conjugation to the secondary antibody and DAB staining.



Immunohistochemistry (Paraffin-embedded Sections)

Image 3. Formalin-fixed and paraffin embedded rat spleen labeled with Anti-Sialoadhesin Polyclonal Antibody, Unconjugated at 1:500 followed by conjugation to the secondary antibody and DAB staining

Please check the [product details page](#) for more images. Overall 5 images are available for ABIN2179210.