



[Go to Product page](#)

Datasheet for ABIN2179231  
**anti-SIPA1L2 antibody (AA 251-350)**

1 Image

### Overview

Quantity:	100 µL
Target:	SIPA1L2
Binding Specificity:	AA 251-350
Reactivity:	Human, Mouse, Rat
Host:	Rabbit
Clonality:	Polyclonal
Conjugate:	This SIPA1L2 antibody is un-conjugated
Application:	Western Blotting (WB), Immunofluorescence (Paraffin-embedded Sections) (IF (p)), Immunohistochemistry (Paraffin-embedded Sections) (IHC (p))

### Product Details

Immunogen:	KLH conjugated synthetic peptide derived from human SIPA1L2
Isotype:	IgG
Cross-Reactivity:	Human, Mouse, Rat
Purification:	Purified by Protein A.

### Target Details

Target:	SIPA1L2
Alternative Name:	SIPA1L2 ( <a href="#">SIPA1L2 Products</a> )
Background:	Synonyms: SI1L2_HUMAN, Signal induced proliferation associated 1 like protein 2, Signal-

## Target Details

---

induced proliferation-associated 1-like protein 2, SIPA1 like protein 2, SIPA1-like protein 2, SIPA1L2, SPAL2, KIAA1389.

Background: SIPA1L2

---

Gene ID: 57568

---

UniProt: [A0A6Q8PH54](#)

## Application Details

---

Application Notes: WB 1:300-5000  
IHC-P 1:200-400  
IF(IHC-P) 1:50-200

---

Restrictions: For Research Use only

## Handling

---

Format: Liquid

---

Concentration: 1 µg/µL

---

Buffer: 0.01M TBS( pH 7.4) with 1 % BSA, 0.02 % Proclin300 and 50 % Glycerol.

---

Preservative: ProClin

---

Precaution of Use: This product contains ProClin: a POISONOUS AND HAZARDOUS SUBSTANCE, which should be handled by trained staff only.

---

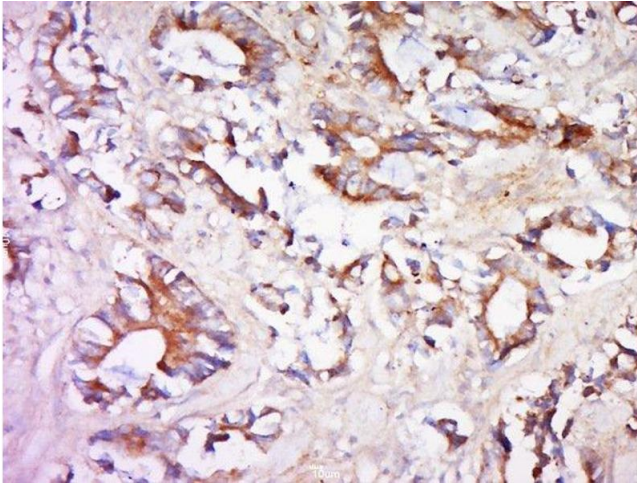
Storage: 4 °C,-20 °C

---

Storage Comment: Shipped at 4°C. Store at -20°C for one year. Avoid repeated freeze/thaw cycles.

---

Expiry Date: 12 months



#### Immunohistochemistry (Paraffin-embedded Sections)

**Image 1.** Paraformaldehyde-fixed, paraffin embedded human cervical cancer, Antigen retrieval by boiling in sodium citrate buffer (pH6) for 15min, Block endogenous peroxidase by 3% hydrogen peroxide for 30 minutes, Blocking buffer (normal goat serum) at 37°C for 20min, Antibody incubation with Rabbit Anti-SIPA1L2 Polyclonal Antibody, Unconjugated at 1:500 overnight at 4°C, followed by a conjugated secondary for 90 minutes and DAB staining.