

Datasheet for ABIN2179263  
**anti-SLK antibody (AA 165-270)**[Go to Product page](#)

## 2 Images

## Overview

Quantity:	100 µL
Target:	SLK
Binding Specificity:	AA 165-270
Reactivity:	Human, Mouse
Host:	Rabbit
Clonality:	Polyclonal
Conjugate:	This SLK antibody is un-conjugated
Application:	Western Blotting (WB), ELISA, Immunofluorescence (Cultured Cells) (IF (cc)), Immunofluorescence (Paraffin-embedded Sections) (IF (p)), Immunohistochemistry (Paraffin- embedded Sections) (IHC (p)), Immunohistochemistry (Frozen Sections) (IHC (fro))

## Product Details

Immunogen:	KLH conjugated synthetic peptide derived from human SLK
Isotype:	IgG
Cross-Reactivity:	Human, Mouse
Predicted Reactivity:	Rat,Dog,Cow,Pig,Chicken,Rabbit
Purification:	Purified by Protein A.

## Target Details

Target:	SLK
---------	-----

## Target Details

Alternative Name:	SLK ( <a href="#">SLK Products</a> )
Background:	<p>Synonyms: Fyn, C syn protooncogene, FYN oncogene related to SRC FGR YES_ MGC45350, OKT3 induced calcium influx regulator, P59 FYN, Protein tyrosine kinase fyn, Proto oncogene tyrosine protein kinase fyn, Protooncogene Syn, SLK, Src like kinase, Src yes related novel gene, Src/yes related novel gene,SYN, Tyrosine kinase p59fyn T, Tyrosine kinase p59fynT.</p> <p>Background: Fyn is a membrane-associated, non-receptor protein tyrosine kinase approximately 59 kDa, which belongs to the Src family of cytoplasmic tyrosine kinases. Fyn is very strongly similar to mouse Fyn, v-yes and c-src. Fyn is expressed predominately in tissues of neuronal and hematopoietic origin. Neuronal Fyn and hematopoietic Fyn differ at the junction of the SH2 and kinase domains due to tissue specific alternative splicing. Fyn has been shown to be involved in B cell and T cell activation as well as keratinocyte differentiation. In T cells, Fyn associates with the T-cell antigen receptor and Thy1.The unique N terminal domain of Fyn interacts with the CD3 and eta chains of the TcR. Fyn can bind to other proteins (p82 and p116) through its SH2 and SH3 domains, which may act as substrates or regulators of Fyn activity. Fyn is highly expressed in brain suggesting that it may have a role in the sensory nervous network and in myelination at early stages of CNS formation.</p>
Gene ID:	9748

## Application Details

Application Notes:	WB 1:300-5000 ELISA 1:500-1000 IHC-P 1:200-400 IHC-F 1:100-500 IF(IHC-P) 1:50-200 IF(IHC-F) 1:50-200 IF(ICC) 1:50-200
Restrictions:	For Research Use only

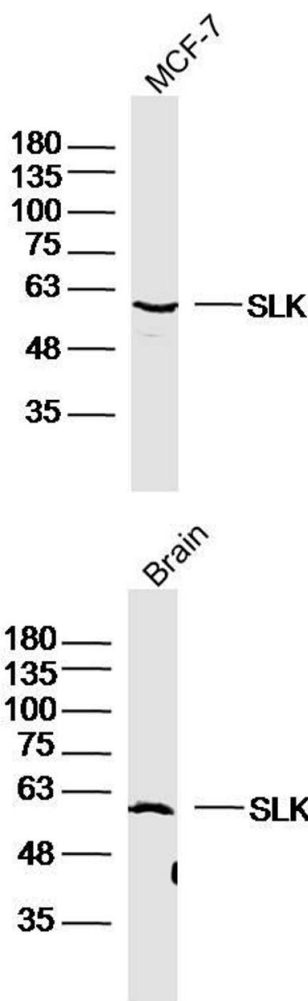
## Handling

Format:	Liquid
Concentration:	1 µg/µL
Buffer:	0.01M TBS( pH 7.4) with 1 % BSA, 0.02 % Proclin300 and 50 % Glycerol.
Preservative:	ProClin

Handling

Precaution of Use:	This product contains ProClin: a POISONOUS AND HAZARDOUS SUBSTANCE, which should be handled by trained staff only.
Storage:	4 °C,-20 °C
Storage Comment:	Shipped at 4°C. Store at -20°C for one year. Avoid repeated freeze/thaw cycles.
Expiry Date:	12 months

Images



**Image 1.** MCF-7 lysates probed with SLK Polyclonal Antibody, Unconjugated at 1:300 dilution and 4°C overnight incubation. Followed by conjugated secondary antibody incubation at 1:10000 for 60 min at 37°C.

**Image 2.** Mouse Brain lysates probed with SLK Polyclonal Antibody, Unconjugated at 1:300 dilution and 4°C overnight incubation. Followed by conjugated secondary antibody incubation at 1:10000 for 60 min at 37°C.