

Datasheet for ABIN2179338

**anti-SOD1 antibody (AA 6-100)**

5 Images

2 Publications

[Go to Product page](#)

## Overview

Quantity:	100 µL
Target:	SOD1
Binding Specificity:	AA 6-100
Reactivity:	Human, Mouse, Rat
Host:	Rabbit
Clonality:	Polyclonal
Conjugate:	This SOD1 antibody is un-conjugated
Application:	Western Blotting (WB), ELISA, Immunocytochemistry (ICC), Immunohistochemistry (Paraffin-embedded Sections) (IHC (p)), Flow Cytometry (FACS), Immunohistochemistry (Frozen Sections) (IHC (fro)), Immunofluorescence (Paraffin-embedded Sections) (IF (p)), Immunofluorescence (Cultured Cells) (IF (cc))

## Product Details

Immunogen:	KLH conjugated synthetic peptide derived from human SOD1
Isotype:	IgG
Cross-Reactivity:	Human, Mouse, Rat
Predicted Reactivity:	Cow,Pig,Horse
Purification:	Purified by Protein A.

## Target Details

Target:	SOD1
---------	------

## Target Details

Alternative Name:	SOD1 ( <a href="#">SOD1 Products</a> )
Background:	<p>Synonyms: Superoxide Dismutase 1, ALS 1, ALS, ALS1, Amyotrophic lateral sclerosis 1 adult, Amyotrophic lateral sclerosis 1, Cu/Zn SOD, Cu/Zn superoxide dismutase, Homodimer, Indophenoloxidase A, IPOA, Mn superoxide dismutase, SOD 1, SOD, SOD soluble, SOD1, SOD2, SODC, Soluble indophenoloxidase A, Superoxide dismutase 1, Superoxide dismutase 1 soluble, Superoxide dismutase Cu Zn, Superoxide dismutase cystolic, SODC_HUMAN, Superoxide dismutase [Cu-Zn], hSod1, Ipo1, SODC, Ipo-1, Sod-1, CuZnSOD, Cu/Zn-SOD, MGC107553, B430204E11Rik, superoxide-dismutase-1.</p> <p>Background: The protein encoded by this gene binds copper and zinc ions and is one of two isozymes responsible for destroying free superoxide radicals in the body. The encoded isozyme is a soluble cytoplasmic protein, acting as a homodimer to convert naturally-occurring but harmful superoxide radicals to molecular oxygen and hydrogen peroxide. The other isozyme is a mitochondrial protein. Mutations in this gene have been implicated as causes of familial amyotrophic lateral sclerosis. Rare transcript variants have been reported for this gene. [provided by RefSeq, Jul 2008]</p>
Gene ID:	6647
Pathways:	<a href="#">Sensory Perception of Sound</a> , <a href="#">Transition Metal Ion Homeostasis</a>

## Application Details

Application Notes:	WB 1:300-5000 ELISA 1:500-1000 FCM 1:20-100 IHC-P 1:200-400 IHC-F 1:100-500 IF(IHC-P) 1:50-200 IF(IHC-F) 1:50-200 IF(ICC) 1:50-200 ICC 1:100-500
Restrictions:	For Research Use only

## Handling

Format:	Liquid
Concentration:	1 µg/µL

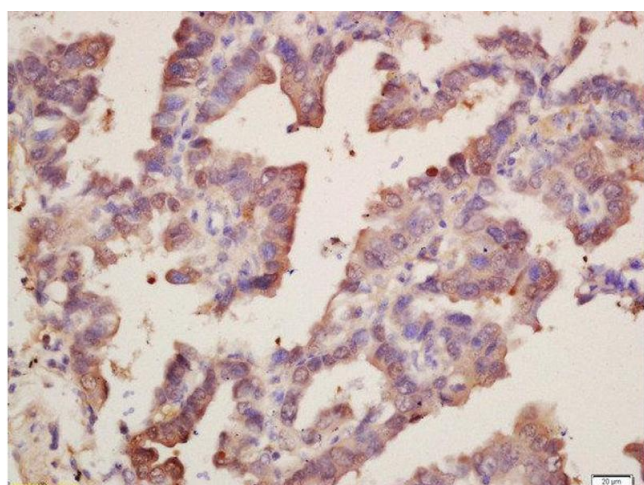
## Handling

Buffer:	0.01M TBS( pH 7.4) with 1 % BSA, 0.02 % Proclin300 and 50 % Glycerol.
Preservative:	ProClin
Precaution of Use:	This product contains ProClin: a POISONOUS AND HAZARDOUS SUBSTANCE, which should be handled by trained staff only.
Storage:	4 °C,-20 °C
Storage Comment:	Shipped at 4°C. Store at -20°C for one year. Avoid repeated freeze/thaw cycles.
Expiry Date:	12 months

## Publications

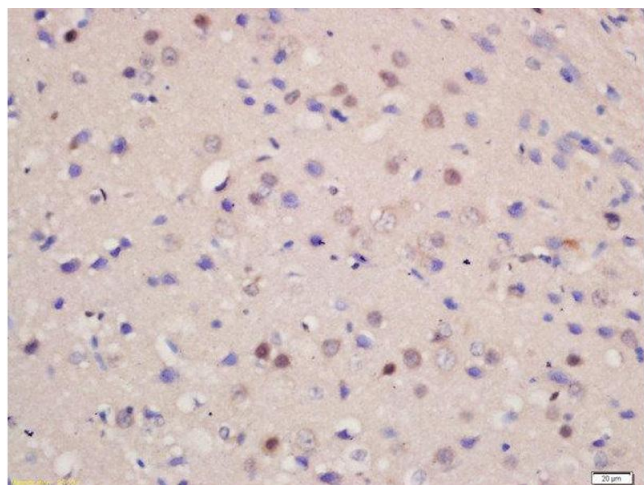
- Product cited in:
- Han, Tang, Lu, Xu, Hu, Mei, Wang: "Astragalus polysaccharide ameliorates H2O2-induced human umbilical vein endothelial cell injury." in: **Molecular medicine reports**, Vol. 15, Issue 6, pp. 4027-4034, (2017) ([PubMed](#)).
- Xu, Bi, Li, Fang, Zhou, Li, Chi, Wan, Shen: "Morphological and proteomic analyses reveal that unsaturated guluronate oligosaccharide modulates multiple functional pathways in murine macrophage RAW264.7 cells." in: **Marine drugs**, Vol. 13, Issue 4, pp. 1798-818, (2015) ([PubMed](#)).

## Images



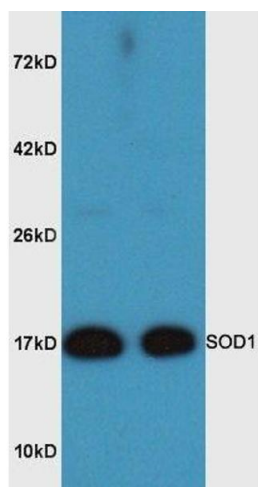
### Immunohistochemistry (Paraffin-embedded Sections)

**Image 1.** Formalin-fixed and paraffin embedded human lung carcinoma labeled with Rabbit Anti-SOD1 Polyclonal Antibody, Unconjugated at 1:200 followed by conjugation to the secondary antibody and DAB staining



#### Immunohistochemistry (Paraffin-embedded Sections)

**Image 2.** Formalin-fixed and paraffin embedded rat brain labeled with Rabbit Anti-SOD1 Polyclonal Antibody, Unconjugated at 1:200 followed by conjugation to the secondary antibody and DAB staining



#### Western Blotting

**Image 3.** Mouse brain lysates probed with Rabbit Anti-SOD1 Polyclonal Antibody, Unconjugated at 1:3000 for 90 min at 37°C.

Please check the [product details page](#) for more images. Overall 5 images are available for ABIN2179338.