



[Go to Product page](#)

Datasheet for ABIN2180458
anti-IKZF2 antibody (AA 21-120)

1 Image

Overview

Quantity:	100 µL
Target:	IKZF2
Binding Specificity:	AA 21-120
Reactivity:	Human
Host:	Rabbit
Clonality:	Polyclonal
Conjugate:	This IKZF2 antibody is un-conjugated
Application:	Western Blotting (WB), ELISA, Immunofluorescence (Cultured Cells) (IF (cc)), Immunofluorescence (Paraffin-embedded Sections) (IF (p)), Immunohistochemistry (Paraffin-embedded Sections) (IHC (p)), Immunocytochemistry (ICC), Immunohistochemistry (Frozen Sections) (IHC (fro))

Product Details

Immunogen:	KLH conjugated synthetic peptide derived from human ZNFN1A2
Isotype:	IgG
Predicted Reactivity:	Human,Mouse,Rat,Dog,Cow,Sheep,Horse,Rabbit
Purification:	Purified by Protein A.

Target Details

Target:	IKZF2
Alternative Name:	ZNFN1A2 (IKZF2 Products)

Target Details

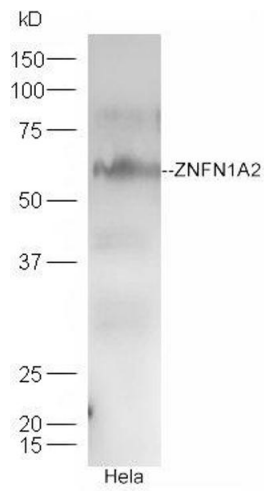
Background:	Synonyms: ANF1A2, HELIOS, ZNF1A2, ZNFN1A2, Zinc finger protein Helios, Ikaros family zinc finger protein 2, IKZF2 Background: Associates with Ikaros at centromeric heterochromatin.
Gene ID:	22807
UniProt:	Q9UKS7

Application Details

Application Notes:	WB 1:300-5000 ELISA 1:500-1000 IHC-P 1:200-400 IHC-F 1:100-500 IF(IHC-P) 1:50-200 IF(IHC-F) 1:50-200 IF(ICC) 1:50-200 ICC 1:100-500
Restrictions:	For Research Use only

Handling

Format:	Liquid
Concentration:	1 µg/µL
Buffer:	0.01M TBS(pH 7.4) with 1 % BSA, 0.02 % Proclin300 and 50 % Glycerol.
Preservative:	ProClin
Precaution of Use:	This product contains ProClin: a POISONOUS AND HAZARDOUS SUBSTANCE, which should be handled by trained staff only.
Storage:	4 °C, -20 °C
Storage Comment:	Shipped at 4°C. Store at -20°C for one year. Avoid repeated freeze/thaw cycles.
Expiry Date:	12 months



Western Blotting

Image 1. HeLa cell lysates probed with Rabbit Anti-ZNFN1A2 Polyclonal Antibody, Unconjugated (ABIN2180458) at 1:300 overnight at 4 °C. Followed by conjugation to secondary antibody at 1:5000 for 90 min at 37 °C.