

Datasheet for ABIN2180640

BCL2L1 Protein (AA 2-212) (GST tag)



[Go to Product page](#)

1 Image

Overview

Quantity:	100 µg
Target:	BCL2L1
Protein Characteristics:	AA 2-212
Origin:	Human
Source:	Escherichia coli (E. coli)
Protein Type:	Recombinant
Purification tag / Conjugate:	This BCL2L1 protein is labelled with GST tag.

Product Details

Sequence:	AA 2-212
Characteristics:	This protein carries a GST tag at the N-terminus. The protein has a calculated MW of 50.5 kDa. The protein migrates as 46 kDa under reducing (R) condition (SDS-PAGE).
Purity:	>92 % as determined by SDS-PAGE.
Sterility:	0.22 µm filtered
Endotoxin Level:	Less than 1.0 EU per µg by the LAL method.

Target Details

Target:	BCL2L1
Alternative Name:	Bcl-X (BCL2L1 Products)
Background:	Bcl-2-like protein 1 (BCL2L1), is also known as Apoptosis regulator Bcl-X (Bcl-XL). BCL2L1 / Bcl-

Target Details

XL is a homodimer protein and belongs to the Bcl-2 family. BCL2L1 is expressed at high levels in cells that undergo a high rate of turnover, such as developing lymphocytes. BCL2L1 is a potent inhibitor of cell death. BCL2L1 Inhibits activation of caspases. BCL2L1 appears to regulate cell death by blocking the voltage-dependent anion channel (VDAC) by binding to it and preventing the release of the caspase activator, CYC1, from the mitochondrial membrane. BCL2L1 / Bcl-XL also acts as a regulator of G2 checkpoint and progression to cytokinesis during mitosis.

Molecular Weight: 50.6 kDa

Pathways: [Apoptosis](#), [Negative Regulation of intrinsic apoptotic Signaling](#)

Application Details

Restrictions: For Research Use only

Handling

Format: Lyophilized

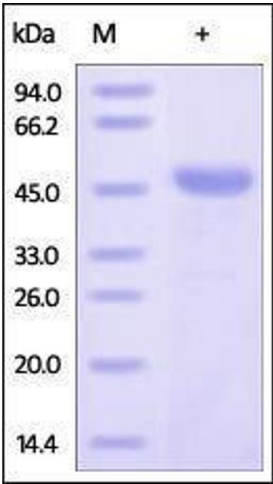
Buffer: 20 mM Tris, 100 mM NaCl, pH 7.5 with 10 mM GSH

Handling Advice: Please avoid repeated freeze-thaw cycles.

Storage: -20 °C

Storage Comment: No activity loss was observed after storage at: In lyophilized state for 1 year (4 °C), After reconstitution under sterile conditions for 3 months (-70 °C).

Images



SDS-PAGE

Image 1. Human Bcl-x, GST Tag on SDS-PAGE under reducing (R) condition. The gel was stained overnight with Coomassie Blue. The purity of the protein is greater than 92%.