



[Go to Product page](#)

Datasheet for ABIN2180655

BTLA Protein (AA 31-134) (Fc Tag)

2 Images

Overview

Quantity:	100 µg
Target:	BTLA
Protein Characteristics:	AA 31-134
Origin:	Human
Source:	HEK-293 Cells
Protein Type:	Recombinant
Biological Activity:	Active
Purification tag / Conjugate:	This BTLA protein is labelled with Fc Tag.

Product Details

Sequence:	AA 31-134
Characteristics:	This protein carries a human IgG1 Fc tag at the C-terminus. The protein has a calculated MW of 38.7 kDa. The protein migrates as 45-50 kDa under reducing (R) condition (SDS-PAGE) due to glycosylation.
Purity:	>92 % as determined by SDS-PAGE.
Sterility:	0.22 µm filtered
Endotoxin Level:	Less than 1.0 EU per µg by the LAL method.

Target Details

Target:	BTLA
---------	------

Target Details

Alternative Name: [BTLA \(BTLA Products\)](#)

Background: B- and T-lymphocyte attenuator (BTLA) is also known as B- and T-lymphocyte-associated protein, CD antigen CD272. BTLA contains one Ig-like V-type (immunoglobulin-like) domain. As a lymphocyte inhibitory receptor, BTLA / CD272 inhibits lymphocytes during immune response. BTLA / CD272 can interact with tyrosine phosphatases PTPN6/SHP-1 and PTPN11/SHP-2, and interact with TNFRSF14/HVEM.

Molecular Weight: 38.7 kDa

NCBI Accession: [NP_001078826](#)

Pathways: [Cancer Immune Checkpoints](#)

Application Details

Restrictions: For Research Use only

Handling

Format: Lyophilized

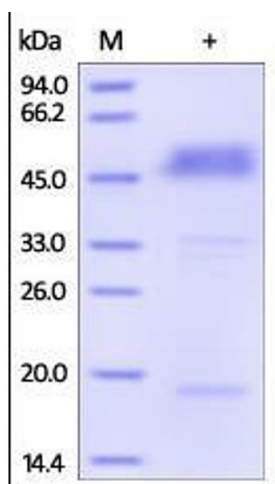
Buffer: Tris with Glycine, Arginine and NaCl, pH 7.5

Handling Advice: Please avoid repeated freeze-thaw cycles.

Storage: -20 °C

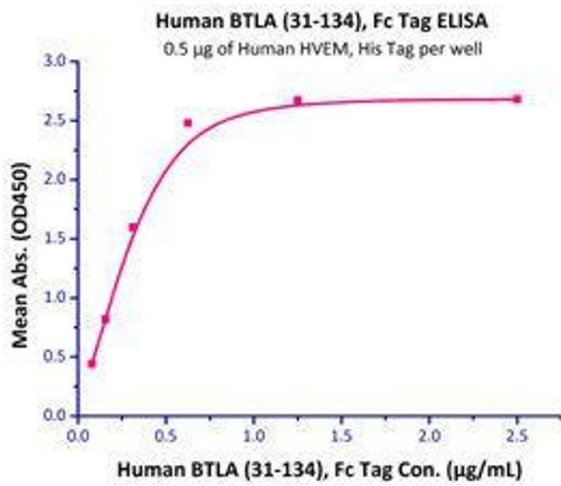
Storage Comment: No activity loss was observed after storage at: In lyophilized state for 1 year (4 °C), After reconstitution under sterile conditions for 3 months (-70 °C).

Images



SDS-PAGE

Image 1. Human BTLA (31-134), Fc Tag on SDS-PAGE under reducing (R) condition. The gel was stained overnight with Coomassie Blue. The purity of the protein is greater than 92%.



Binding Studies

Image 2. Immobilized Human HVEM, His Tag (Cat # HVM-H52E9) at 5 µg/mL (100 µL/well) can bind Human BTLA, Fc Tag (Cat # BTA-H5255) with a linear range of 0.08-0.3 µg/mL.