

Datasheet for ABIN2180703

CD166 Protein (AA 28-526) (Fc Tag)[Go to Product page](#)**1** Image

Overview

Quantity:	200 µg
Target:	CD166 (ALCAM)
Protein Characteristics:	AA 28-526
Origin:	Human
Source:	HEK-293 Cells
Protein Type:	Recombinant
Purification tag / Conjugate:	This CD166 protein is labelled with Fc Tag.

Product Details

Sequence:	AA 28-526
Characteristics:	This protein carries a human IgG1 Fc tag at the C-terminus. The protein has a calculated MW of 82.6 kDa. The protein migrates as 95-120 kDa under reducing (R) condition (SDS-PAGE) due to glycosylation.
Purity:	>95 % as determined by SDS-PAGE.
Sterility:	0.22 µm filtered
Endotoxin Level:	Less than 1.0 EU per µg by the LAL method.

Target Details

Target:	CD166 (ALCAM)
Alternative Name:	ALCAM (ALCAM Products)

Target Details

Background:	CD166 antigen is a 100-105 kD typeI transmembrane glycoprotein that is a member of the immunoglobulin superfamily of proteins, which is also known as Activated leukocyte cell adhesion molecule (ALCAM) in human, SC-1/DM-GRASP/BEN in the chicken, and KG-CAM in the rat. CD166 is a cell adhesion molecule that binds to CD6. CD166 involved in neurite extension by neurons via heterophilic and homophilic interactions.
Molecular Weight:	82.6 kDa
NCBI Accession:	NP_001618

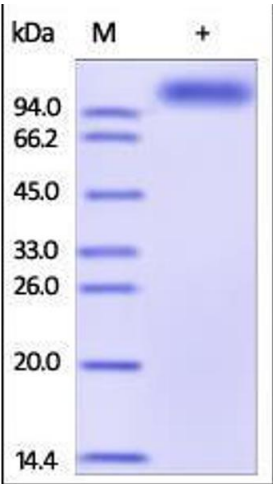
Application Details

Restrictions:	For Research Use only
---------------	-----------------------

Handling

Format:	Lyophilized
Buffer:	Tris with Glycine, Arginine and NaCl, pH 7.5
Handling Advice:	Please avoid repeated freeze-thaw cycles.
Storage:	-20 °C
Storage Comment:	No activity loss was observed after storage at: In lyophilized state for 1 year (4 °C), After reconstitution under sterile conditions for 3 months (-70 °C).

Images



SDS-PAGE

Image 1. Human ALCAM, Fc Tag on SDS-PAGE under reducing (R) condition. The gel was stained overnight with Coomassie Blue. The purity of the protein is greater than 95%.