



[Go to Product page](#)

Datasheet for ABIN2180738

## CD3 epsilon Protein (CD3E) (AA 23-126) (His tag,Fc Tag)

### 2 Images

#### Overview

Quantity:	100 µg
Target:	CD3 epsilon (CD3E)
Protein Characteristics:	AA 23-126
Origin:	Human
Source:	HEK-293 Cells
Protein Type:	Recombinant
Biological Activity:	Active
Purification tag / Conjugate:	This CD3 epsilon protein is labelled with His tag,Fc Tag.

#### Product Details

Sequence:	AA 23-126
Characteristics:	This protein carries a human IgG1 Fc tag at the C-terminus, followed by a polyhistidine tag. The protein has a calculated MW of 39.2 kDa. The protein migrates as 44-54 kDa under reducing (R) condition (SDS-PAGE) due to glycosylation.
Purity:	>95 % as determined by SDS-PAGE.
Sterility:	0.22 µm filtered
Endotoxin Level:	Less than 1.0 EU per µg by the LAL method.

#### Target Details

Target:	CD3 epsilon (CD3E)
---------	--------------------

## Target Details

---

Alternative Name: [CD3 epsilon \(CD3E Products\)](#)

---

Background: CD3e molecule, epsilon is also known as CD3E, is a T-cell surface single-pass type I membrane glycoprotein. CD3E contains 1 Ig-like (immunoglobulin-like) domain and 1 ITAM domain. CD3E, together with CD3-gamma, CD3-delta and CD3-zeta, and the T-cell receptor alpha/beta and gamma/delta heterodimers, forms the T cell receptor-CD3 complex. This complex plays an important role in coupling antigen recognition to several intracellular signal-transduction pathways. The genes encoding the epsilon, gamma and delta polypeptides are located in the same cluster on chromosome 11. The epsilon polypeptide plays an essential role in T-cell development. CD3E plays an essential role in T-cell development, and defects in CD3E gene cause severe immunodeficiency. CD3E gene has also been linked to a susceptibility to type I diabetes in women. CD3E has been shown to interact with TOP2B, CD3EAP and NCK2.

---

Molecular Weight: 39.2 kDa

---

NCBI Accession: [NP\\_000724](#)

---

Pathways: [TCR Signaling](#), [CXCR4-mediated Signaling Events](#), [Ubiquitin Proteasome Pathway](#)

---

## Application Details

---

Restrictions: For Research Use only

---

## Handling

---

Format: Lyophilized

---

Buffer: PBS, pH 7.4

---

Handling Advice: Please avoid repeated freeze-thaw cycles.

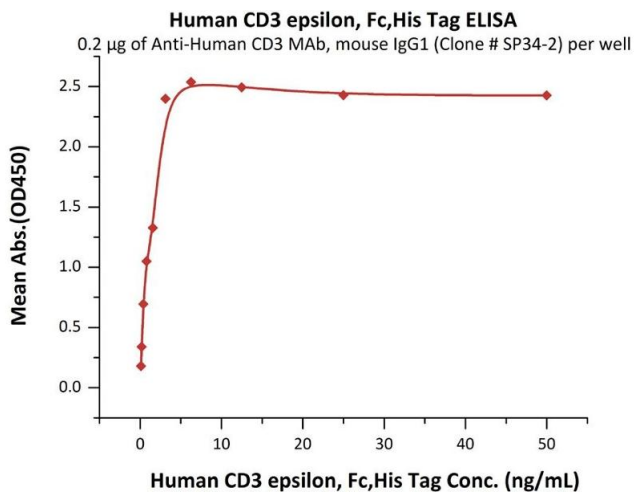
---

Storage: -20 °C

---

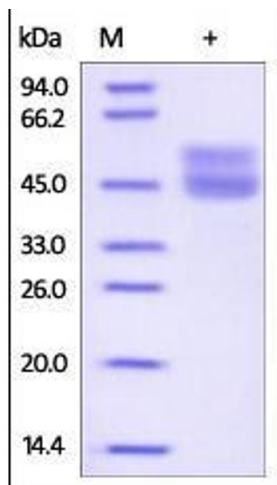
Storage Comment: No activity loss was observed after storage at: In lyophilized state for 1 year (4 °C), After reconstitution under sterile conditions for 3 months (-70 °C).

---



**ELISA**

**Image 1.** Immobilized Anti Human CD3 MAb, mouse IgG1 (Clone # SP34-2) at 2 µg/mL (100 µL/well) can bind Human CD3 epsilon, Fc,His Tag (ABIN2180739,ABIN2180738) with a linear range of 0.1-3 ng/mL (Routinely tested).



**SDS-PAGE**

**Image 2.**