

Datasheet for ABIN2180784

CD4 Protein (CD4) (AA 26-390) (Fc Tag)[Go to Product page](#)**3** Images

Overview

Quantity:	100 µg
Target:	CD4
Protein Characteristics:	AA 26-390
Origin:	Rhesus Monkey
Source:	HEK-293 Cells
Protein Type:	Recombinant
Biological Activity:	Active
Purification tag / Conjugate:	This CD4 protein is labelled with Fc Tag.

Product Details

Sequence:	AA 26-390
Characteristics:	This protein carries a human IgG1 Fc tag at the C-terminus. The protein has a calculated MW of 67 kDa. The protein migrates as 70-80 kDa under reducing (R) condition (SDS-PAGE) due to glycosylation.
Purity:	>95 % as determined by SDS-PAGE.
Sterility:	0.22 µm filtered
Endotoxin Level:	Less than 1.0 EU per µg by the LAL method.

Target Details

Target:	CD4
---------	-----

Target Details

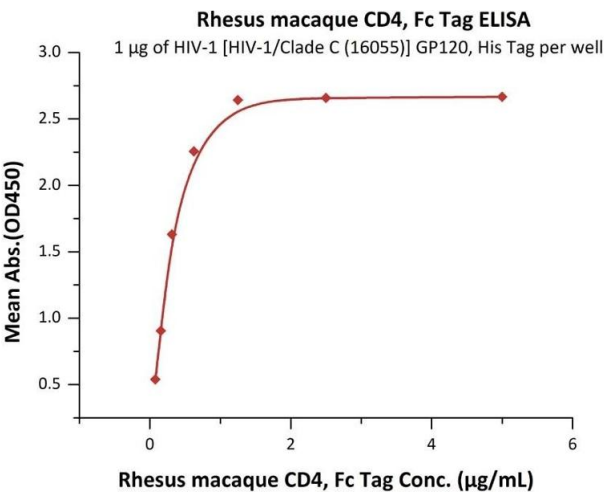
Alternative Name:	CD4 (CD4 Products)
Background:	T-cell surface glycoprotein CD4 is also known as T-cell surface antigen T4/Leu-3. CD4 contains three Ig-like C2-type (immunoglobulin-like) domains and one Ig-like V-type (immunoglobulin-like) domain. CD4 is accessory protein for MHC class-II antigen/T-cell receptor interaction. CD4 induces the aggregation of lipid rafts. CD4 is a primary receptor used by HIV-1 to gain entry into host T cells. HIV infection leads to a progressive reduction of the number of T cells possessing CD4 receptors. Therefore, medical professionals refer to the CD4 count to decide when to begin treatment for HIV-infected patients.
Molecular Weight:	67.0 kDa
UniProt:	G7N5T8
Pathways:	TCR Signaling , Maintenance of Protein Location , CXCR4-mediated Signaling Events

Application Details

Restrictions:	For Research Use only
---------------	-----------------------

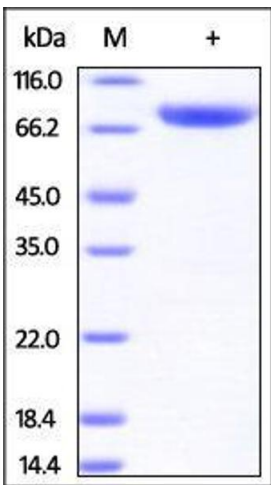
Handling

Format:	Lyophilized
Buffer:	Tris with Glycine, Arginine and NaCl, pH 7.5
Handling Advice:	Please avoid repeated freeze-thaw cycles.
Storage:	-20 °C
Storage Comment:	No activity loss was observed after storage at: In lyophilized state for 1 year (4 °C), After reconstitution under sterile conditions for 3 months (-70 °C).



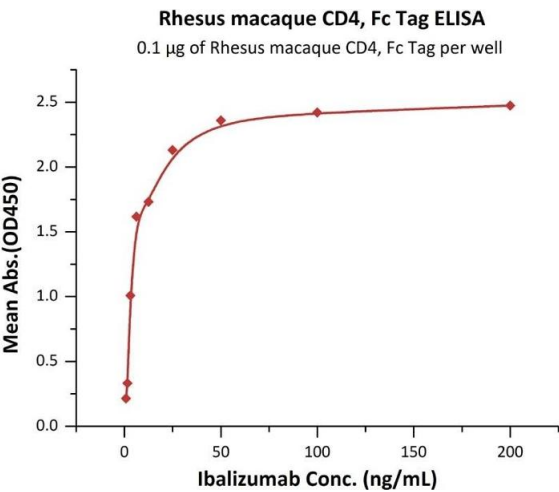
ELISA

Image 1. Immobilized HIV-1 [HIV-1/Clade C (16055)] GP120, His Tag (4) at 10 µg/mL (100 µL/well) can bind Rhesus macaque CD4, Fc Tag (ABIN2180785,ABIN2180784) with a linear range of 0.04-0.31 µg/mL (Routinely tested).



SDS-PAGE

Image 2.



ELISA

Image 3. Immobilized Rhesus macaque CD4, Fc Tag (ABIN2180785,ABIN2180784) at 1 µg/mL (100 µL/well) can bind Ibalizumab with a linear range of 0.4-25 ng/mL (QC tested).