

Datasheet for ABIN2180891

**CNTF Receptor alpha Protein (AA 23-346) (His tag)**[Go to Product page](#)**1** Image

## Overview

Quantity:	100 µg
Target:	CNTF Receptor alpha (CNTFR)
Protein Characteristics:	AA 23-346
Origin:	Human
Source:	HEK-293 Cells
Protein Type:	Recombinant
Purification tag / Conjugate:	This CNTF Receptor alpha protein is labelled with His tag.

## Product Details

Sequence:	AA 23-346
Characteristics:	This protein carries a polyhistidine tag at the C-terminus. The protein has a calculated MW of 36.9 kDa. The protein migrates as 45-48 kDa under reducing (R) condition (SDS-PAGE) due to glycosylation.
Purity:	>95 % as determined by SDS-PAGE.
Sterility:	0.22 µm filtered
Endotoxin Level:	Less than 1.0 EU per µg by the LAL method.

## Target Details

Target:	CNTF Receptor alpha (CNTFR)
Alternative Name:	CNTF R alpha ( <a href="#">CNTFR Products</a> )

## Target Details

Background:	Ciliary neurotrophic factor receptor subunit alpha (CNTFR or CNTFR-alpha) belongs to the type I cytokine receptor family and type 3 subfamily. CNTFR contains two fibronectin type-III domains and one Ig-like C2-type (immunoglobulin-like) domain. This receptor and its cognate ligand support the survival of neurons. This receptor is most closely related to the interleukin-6 receptor. This receptor possesses an unusual attachment to the cell membrane through a glycoposphatidylinositol linkage.
Molecular Weight:	37.6 kDa
Pathways:	<a href="#">JAK-STAT Signaling</a> , <a href="#">Feeding Behaviour</a>

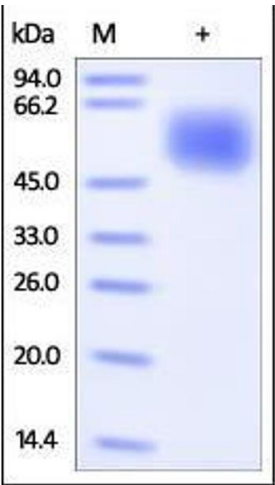
## Application Details

Restrictions:	For Research Use only
---------------	-----------------------

## Handling

Format:	Lyophilized
Buffer:	PBS, pH 7.4
Handling Advice:	Please avoid repeated freeze-thaw cycles.
Storage:	-20 °C
Storage Comment:	No activity loss was observed after storage at: In lyophilized state for 1 year (4 °C), After reconstitution under sterile conditions for 3 months (-70 °C).

## Images



### SDS-PAGE

**Image 1.** Human CNTF R alpha, His Tag on SDS-PAGE under reducing (R) condition. The gel was stained overnight with Coomassie Blue. The purity of the protein is greater than 95%.