

Datasheet for ABIN2180926

**CTLA4 Protein (AA 37-160) (His tag)****3** Images[Go to Product page](#)

## Overview

Quantity:	200 µg
Target:	CTLA4
Protein Characteristics:	AA 37-160
Origin:	Cynomolgus, Rhesus Monkey
Source:	HEK-293 Cells
Protein Type:	Recombinant
Biological Activity:	Active
Purification tag / Conjugate:	This CTLA4 protein is labelled with His tag.

## Product Details

Sequence:	AA 37-160
Characteristics:	This protein carries a polyhistidine tag at the C-terminus. The protein has a calculated MW of 14.1 kDa. The protein migrates as 18-23 kDa under reducing (R) condition (SDS-PAGE) due to glycosylation.
Purity:	>95 % as determined by SDS-PAGE.
Sterility:	0.22 µm filtered
Endotoxin Level:	Less than 1.0 EU per µg by the LAL method.

## Target Details

Target:	CTLA4
---------	-------

## Target Details

Alternative Name: CTLA-4 ([CTLA4 Products](#))

Background: CTLA-4 (Cytotoxic T-Lymphocyte Antigen 4) is also known as CD152 (Cluster of differentiation 152), is a protein receptor that downregulates the immune system. CTLA4 is a member of the immunoglobulin superfamily, which is expressed on the surface of Helper T cells and transmits an inhibitory signal to T cells. The protein contains an extracellular V domain, a transmembrane domain, and a cytoplasmic tail. Alternate splice variants, encoding different isoforms. CTLA4 is similar to the T-cell co-stimulatory protein, CD28, and both molecules bind to CD80 and CD86, also called B7-1 and B7-2 respectively, on antigen-presenting cells. CTLA4 transmits an inhibitory signal to T cells, whereas CD28 transmits a stimulatory signal. Intracellular CTLA4 is also found in regulatory T cells and may be important to their function. Fusion proteins of CTLA4 and antibodies (CTLA4-Ig) have been used in clinical trials for rheumatoid arthritis.

Molecular Weight: 14.1 kDa

NCBI Accession: [XP\\_005574071](#)

UniProt: [G7PL88](#)

Pathways: [Cancer Immune Checkpoints](#)

## Application Details

Restrictions: For Research Use only

## Handling

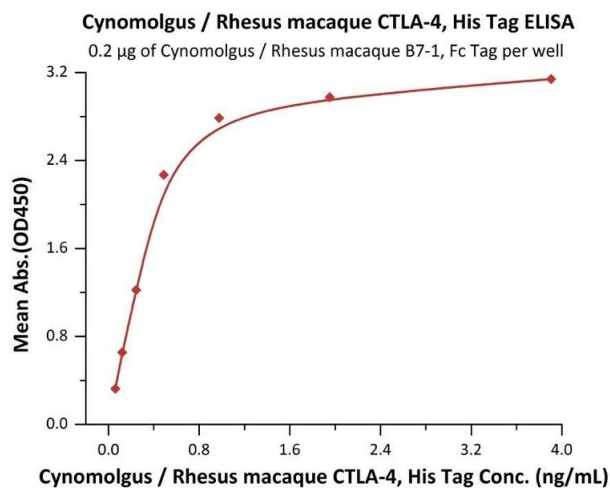
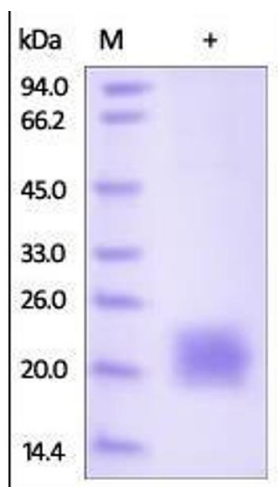
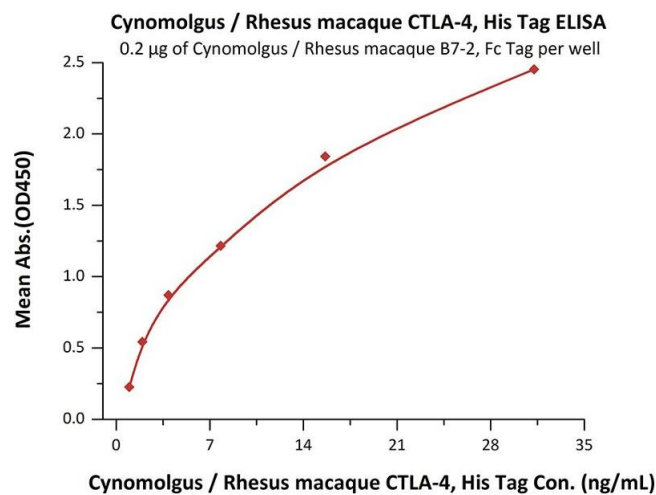
Format: Lyophilized

Buffer: PBS, pH 7.4

Handling Advice: Please avoid repeated freeze-thaw cycles.

Storage: -20 °C

Storage Comment: No activity loss was observed after storage at: In lyophilized state for 1 year (4 °C), After reconstitution under sterile conditions for 3 months (-70 °C).



## ELISA

**Image 1.** Immobilized Cynomolgus / Rhesus macaque B7-2, Fc Tag (ABIN2180852,ABIN2180851) at 2 µg/mL (100 µ L/well) can bind Cynomolgus / Rhesus macaque CTLA-4, His Tag (ABIN2180926,ABIN2180925) with a linear range of 4-31 ng/mL (Routinely tested).

## SDS-PAGE

**Image 2.** Cynomolgus CTLA-4, His Tag on SDS-PAGE under reducing (R) condition. The gel was stained overnight with Coomassie Blue. The purity of the protein is greater than 95%.

## ELISA

**Image 3.** Immobilized Cynomolgus / Rhesus macaque B7-1, Fc Tag (ABIN2870586,ABIN2870587) at 2 µg/mL (100 µ L/well) can bind Cynomolgus / Rhesus macaque CTLA-4, His Tag (ABIN2180926,ABIN2180925) with a linear range of 0.06-0.5 ng/mL (QC tested).