

Datasheet for ABIN2181038

ERBB3 Protein (AA 20-643) (His tag)**3** Images**4** Publications[Go to Product page](#)

Overview

Quantity:	100 µg
Target:	ERBB3
Protein Characteristics:	AA 20-643
Origin:	Human
Source:	HEK-293 Cells
Protein Type:	Recombinant
Purification tag / Conjugate:	This ERBB3 protein is labelled with His tag.

Product Details

Sequence:	AA 20-643
Characteristics:	This protein carries a polyhistidine tag at the C-terminus. The protein has a calculated MW of 71.5 kDa. The protein migrates as 100-110 kDa under reducing (R) condition (SDS-PAGE) due to glycosylation.
Purity:	>95 % as determined by SDS-PAGE.
Sterility:	0.22 µm filtered
Endotoxin Level:	Less than 1.0 EU per µg by the LAL method.

Target Details

Target:	ERBB3
Alternative Name:	ErbB3 (ERBB3 Products)

Target Details

Background:	ErbB3, also known as Her3 (human epidermal growth factor receptor 3), is a member of the epidermal growth factor receptor (EGFR) family of receptor tyrosine kinases. This membrane-bound glycoprotein has a neuregulin binding domain but has not an active kinase domain. It therefore can bind the ligand but cannot mediate the intracellular signal transduction through protein phosphorylation. However, it does form heterodimers with ErbB2 or other EGFR members responsible for tyrosine phosphorylation to give a receptor complex and initiate the related pathway, which lead to cell proliferation or differentiation. Overexpression of this protein has been reported in numerous cancers, including prostate, bladder, and breast tumors. This protein has different isoforms derived from alternative splicing variants, and among which, the secreted isoform lacking the intermembrane region modulates the activity of membrane-bound form.
Molecular Weight:	70.5 kDa
NCBI Accession:	NP_001973
Pathways:	RTK Signaling , Fc-epsilon Receptor Signaling Pathway , EGFR Signaling Pathway , Neurotrophin Signaling Pathway

Application Details

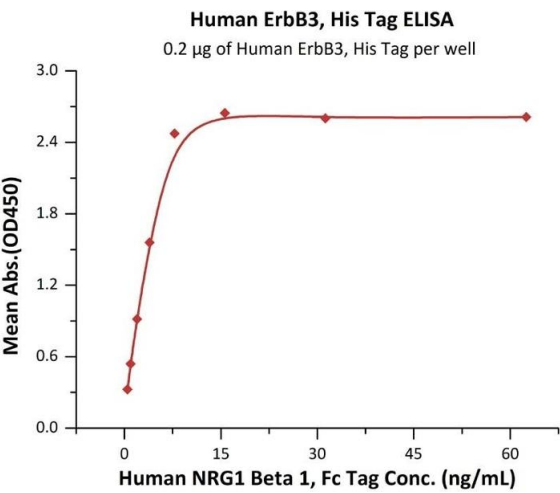
Restrictions:	For Research Use only
---------------	-----------------------

Handling

Format:	Lyophilized
Buffer:	PBS, pH 7.4
Handling Advice:	Please avoid repeated freeze-thaw cycles.
Storage:	-20 °C
Storage Comment:	No activity loss was observed after storage at: In lyophilized state for 1 year (4 °C), After reconstitution under sterile conditions for 3 months (-70 °C).

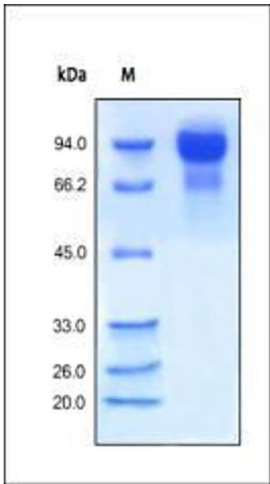
Publications

Product cited in:	Mettler Izquierdo, Varela, Park, Collarini, Lu, Pramanick, Rucker, Lopalco, Etches, Harriman: "High-efficiency antibody discovery achieved with multiplexed microscopy." in: Microscopy (Oxford, England) , Vol. 65, Issue 4, pp. 341-52, (2018) (PubMed).
-------------------	---



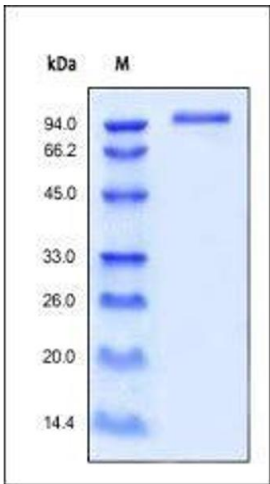
ELISA

Image 1. Immobilized Human ErbB3, His Tag (ABIN2181039,ABIN2181038) at 2 µg/mL (100 µL/well) can bind Human NRG1 Beta 1, Fc Tag (ABIN6973185) with a linear range of 0.5-8 ng/mL (QC tested).



SDS-PAGE

Image 2.



SDS-PAGE

Image 3. Human ErbB3, His Tag on SDS-PAGE under reducing (R) condition. The gel was stained overnight with Coomassie Blue. The purity of the protein is greater than 95%.