

Datasheet for ABIN2181182

Glypican 3 Protein (GPC3) (AA 25-559) (His tag)**3** Images[Go to Product page](#)

Overview

Quantity:	100 µg
Target:	Glypican 3 (GPC3)
Protein Characteristics:	AA 25-559
Origin:	Human
Source:	HEK-293 Cells
Protein Type:	Recombinant
Biological Activity:	Active
Purification tag / Conjugate:	This Glypican 3 protein is labelled with His tag.

Product Details

Sequence:	AA 25-559
Characteristics:	This protein carries a polyhistidine tag at the C-terminus. The protein has a calculated MW of 61.7 kDa. The protein migrates as 40 kDa and 60-130 kDa under reducing (R) condition (SDS-PAGE) due to glycosylation and associated via disulfide bonds.
Purity:	>90 % as determined by SDS-PAGE.
Sterility:	0.22 µm filtered
Endotoxin Level:	Less than 0.1 EU per µg by the LAL method.

Target Details

Target:	Glypican 3 (GPC3)
---------	-------------------

Target Details

Alternative Name:	Glypican 3 (GPC3 Products)
Background:	Glypican-3 (GPC3) is also known as Intestinal protein OCI-5, GTR2-2, MXR7, which belongs to the glypican family. Glypican 3 / GPC-3 is highly expressed in lung, liver and kidney. Glypican-3 inhibits the dipeptidyl peptidase activity of DPP4. Glypican-3 may be involved in the suppression/modulation of growth in the predominantly mesodermal tissues and organs, and also may play a role in the modulation of IGF2 interactions with its receptor and thereby modulate its function.
Molecular Weight:	61.7 kDa
Pathways:	Glycosaminoglycan Metabolic Process

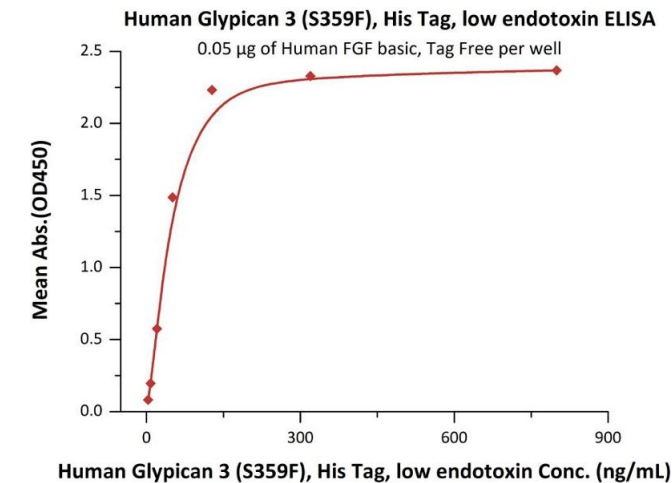
Application Details

Restrictions:	For Research Use only
---------------	-----------------------

Handling

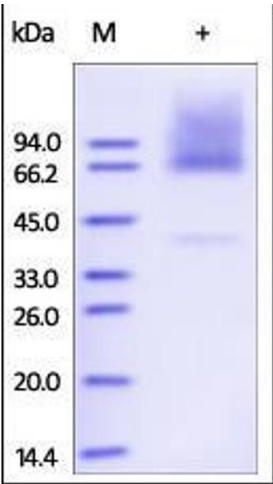
Format:	Lyophilized
Buffer:	PBS, pH 7.4
Handling Advice:	Please avoid repeated freeze-thaw cycles.
Storage:	-20 °C
Storage Comment:	No activity loss was observed after storage at: In lyophilized state for 1 year (4 °C), After reconstitution under sterile conditions for 3 months (-70 °C).

Images



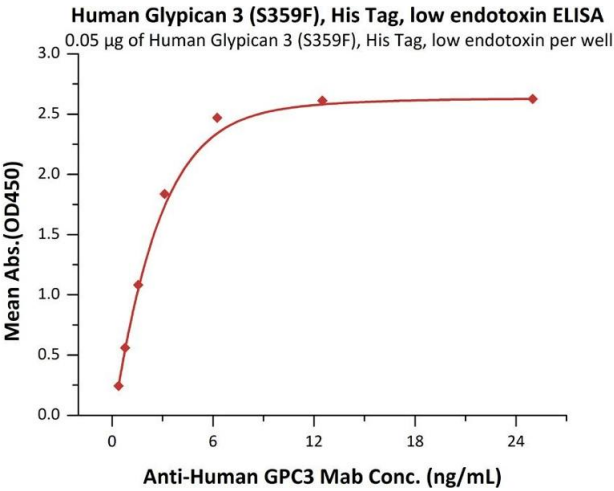
ELISA

Image 1. Immobilized Human FGF basic, Tag Free (ABIN2444057,ABIN2180650,ABIN2180649) at 0.5 µg/mL (100 µL/well) can bind Human Glypican 3 (S359F), His Tag, low endotoxin (ABIN2181183,ABIN2181182) with a linear range of 3-128 ng/mL (QC tested).



SDS-PAGE

Image 2. Human Glypican 3, His Tag on SDS-PAGE under reducing (R) condition. The gel was stained overnight with Coomassie Blue. The purity of the protein is greater than 90%.



ELISA

Image 3. Immobilized Human Glypican 3 (S359F), His Tag, low endotoxin (ABIN2181183,ABIN2181182) at 0.5 µg/mL (100 µL/well) can bind A GPC3 Mab with a linear range of 0.4-3 ng/mL (Routinely tested).