

Datasheet for ABIN2181214

ErbB2/Her2 Protein (AA 23-652) (His tag)

3 Images

15 Publications

[Go to Product page](#)

Overview

Quantity:	100 µg
Target:	ErbB2/Her2
Protein Characteristics:	AA 23-652
Origin:	Human
Source:	HEK-293 Cells
Protein Type:	Recombinant
Biological Activity:	Active
Purification tag / Conjugate:	This ErbB2/Her2 protein is labelled with His tag.

Product Details

Sequence:	AA 23-652
Characteristics:	This protein carries a polyhistidine tag at the C-terminus. The protein has a calculated MW of 70.2 kDa. The protein migrates as 110-115 kDa under reducing (R) condition (SDS-PAGE) due to glycosylation.
Purity:	>95 % as determined by SDS-PAGE.
Sterility:	0.22 µm filtered
Endotoxin Level:	Less than 1.0 EU per µg by the LAL method.

Target Details

Target:	ErbB2/Her2
---------	------------

Target Details

Alternative Name: Her2 ([ErbB2/Her2 Products](#))

Background: Human Epidermal growth factor Receptor 2 (HER2) is also called ERBB2, HER-2, HER-2 /neu, NEU, NGL, TKR1 and c-erb B2, and is a protein giving higher aggressiveness in breast cancers. It is a member of the ErbB protein family, more commonly known as the epidermal growth factor receptor family. HER2 is a cell membrane surface-bound receptor tyrosine kinase and is normally involved in the signal transduction pathways leading to cell growth and differentiation. HER2 is thought to be an orphan receptor, with none of the EGF family of ligands able to activate it. Approximately 30 % of breast cancers have an amplification of the HER2 gene or overexpression of its protein product. Overexpression of this receptor in breast cancer is associated with increased disease recurrence and worse prognosis. HER2 appears to play roles in development, cancer, communication at the neuromuscular junction and regulation of cell growth and differentiation .

Molecular Weight: 70.2 kDa

NCBI Accession: [NP_004439](#)

Pathways: [RTK Signaling](#), [Fc-epsilon Receptor Signaling Pathway](#), [EGFR Signaling Pathway](#), [Neurotrophin Signaling Pathway](#), [Skeletal Muscle Fiber Development](#)

Application Details

Restrictions: For Research Use only

Handling

Format: Lyophilized

Buffer: PBS, pH 7.4

Handling Advice: Please avoid repeated freeze-thaw cycles.

Storage: -20 °C

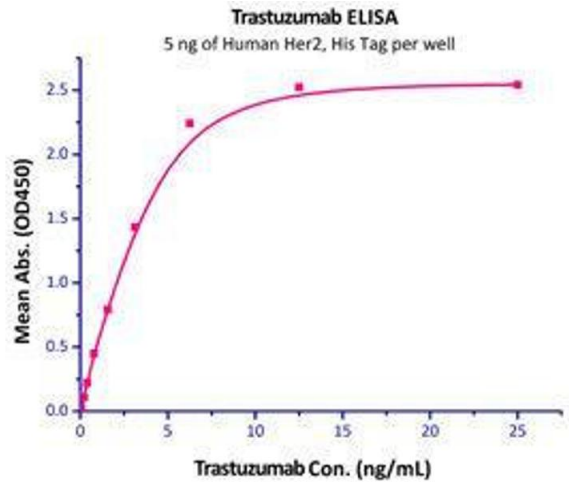
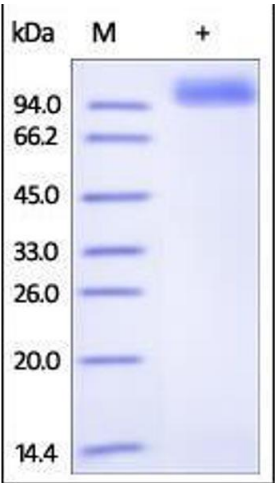
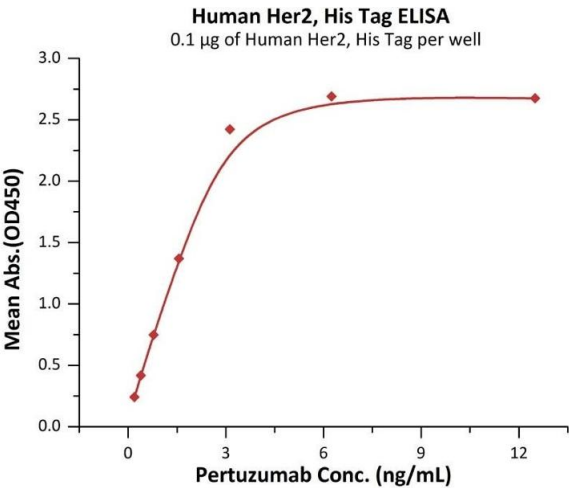
Storage Comment: No activity loss was observed after storage at: In lyophilized state for 1 year (4 °C), After reconstitution under sterile conditions for 3 months (-70 °C).

Publications

Product cited in: Mettler Izquierdo, Varela, Park, Collarini, Lu, Pramanick, Rucker, Lopalco, Etches, Harriman: "High-efficiency antibody discovery achieved with multiplexed microscopy." in: **Microscopy (Oxford, England)**, Vol. 65, Issue 4, pp. 341-52, (2018) ([PubMed](#)).

There are more publications referencing this product on: [Product page](#)

Images



ELISA

Image 1. Immobilized Human Her2, His Tag (ABIN2181215, ABIN2181214) at 1 µg/mL (100 µL/well) can bind Pertuzumab with a linear range of 0.2-3 ng/mL (Routinely tested).

SDS-PAGE

Image 2. Human Her2, His Tag on SDS-PAGE under reducing (R) condition. The gel was stained overnight with Coomassie Blue. The purity of the protein is greater than 95%.

Binding Studies

Image 3. Immobilized Human Her2, His Tag can bind trastuzumab with a linear range of 0.05-3 ng/mL.