

Datasheet for ABIN2181669
Protein G Protein (His tag)

3 Images

1 Publication

[Go to Product page](#)

Overview

Quantity:	10 mg
Target:	Protein G
Origin:	Streptococcus
Source:	Escherichia coli (E. coli)
Protein Type:	Recombinant
Purification tag / Conjugate:	This Protein G protein is labelled with His tag.

Product Details

Brand:	MABSol®
Characteristics:	Recombinant Protein G Protein is fused with the polyhistidine tag at N-terminus and a single cysteine at C-terminus. The reducing (R) protein migrates as a 31 kDa polypeptide .Protein G Protein can bind to human IgG1 Fc .
Purity:	>98 % as determined by SDS-PAGE.
Endotoxin Level:	Less than 1.0 EU per µg by the LAL method.

Target Details

Target:	Protein G
Abstract:	Protein G Products
Background:	Protein G is an immunoglobulin-binding protein expressed in group C and G Streptococcal bacteria much like Protein A but with differing specificities. It is a 65- kDa (G148 protein G) and a 58 kDa (C40 protein G) cell surface protein that has found application in purifying antibodies

Target Details

through its binding to the Fc region. The native molecule also binds albumin, however, because serum albumin is a major contaminant of antibody sources, the albumin binding site has been removed from this recombinant form of Protein G.

Application Details

Restrictions: For Research Use only

Handling

Format: Lyophilized

Reconstitution: Please see Certificate of Analysis for specific instructions. For best performance, we strongly recommend you to follow the reconstitution protocol provided in the CoA.

Buffer: 100 mM NaH₂PO₄, pH 8.5

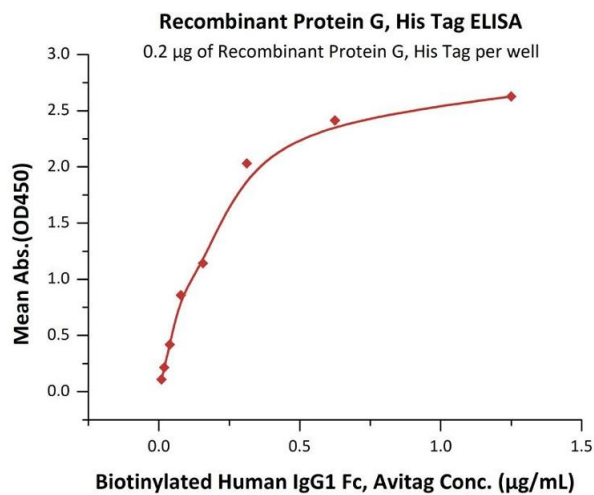
Handling Advice: Avoid repeated freeze-thaw cycles.

Storage: -20 °C

Storage Comment: Lyophilized Protein should be stored at -20 °C or lower for long term storage. Upon reconstitution, working aliquots should be stored at -20 °C or -70 °C. Avoid repeated freeze-thaw cycles.

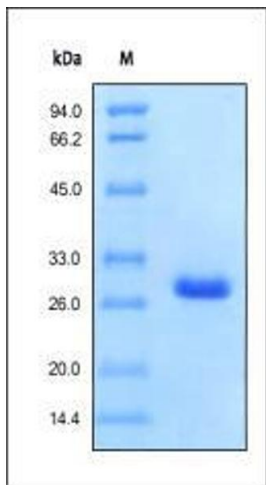
Publications

Product cited in: McGonigle, Majumder, Kolber-Simonds, Wu, Hart, Noland, TenDyke, Custar, Li, Du, Postema, Lai, Twine, Woodall-Jappe, Nomoto: "Neuropilin-1 drives tumor-specific uptake of chlorotoxin." in: **Cell communication and signaling : CCS**, Vol. 17, Issue 1, pp. 67, (2019) ([PubMed](#)).



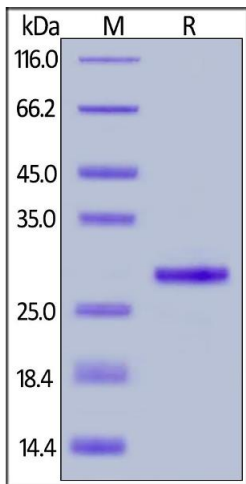
ELISA

Image 1. Immobilized Recombinant Protein G, His Tag (ABIN2181670,ABIN2181669,ABIN4370274) at 2 µg/mL (100 µL/well) can bind Biotinylated Human IgG1 Fc, Avitag (ABIN5674596,ABIN6253700) with a linear range of 0.01-0.313 µg/mL (Routinely tested).



SDS-PAGE

Image 2.



SDS-PAGE

Image 3. Recombinant Protein G, His Tag on under reducing (R) condition. The gel was stained overnight with Coomassie Blue. The purity of the protein is greater than 98 % .