

Datasheet for ABIN2181675

PTH1R Protein (AA 27-188) (His tag)[Go to Product page](#)**1** Image

Overview

Quantity:	100 µg
Target:	PTH1R
Protein Characteristics:	AA 27-188
Origin:	Human
Source:	HEK-293 Cells
Protein Type:	Recombinant
Purification tag / Conjugate:	This PTH1R protein is labelled with His tag.

Product Details

Sequence:	AA 27-188
Characteristics:	This protein carries a polyhistidine tag at the C-terminus. The protein has a calculated MW of 19.3 kDa. The protein migrates as 23-40 kDa under reducing (R) condition (SDS-PAGE) due to different glycosylation.
Purity:	>85 % as determined by SDS-PAGE.
Sterility:	0.22 µm filtered
Endotoxin Level:	Less than 1.0 EU per µg by the LAL method.

Target Details

Target:	PTH1R
Alternative Name:	PTH1R (PTH1R Products)

Target Details

Background:	Parathyroid hormone/parathyroid hormone-related peptide receptor is also known as Parathyroid hormone 1 receptor (PTH1R), PTHR1, PTH/PTHrP type I receptor (PTH/PTHr receptor), which belongs to the G-protein coupled receptor 2 family. PTH1R / PTHR1 is a receptor for parathyroid hormone and for parathyroid hormone-related peptide. The activity of this receptor is mediated by G proteins which activate adenylyl cyclase and also a phosphatidylinositol-calcium second messenger system.
Molecular Weight:	19.6 kDa
NCBI Accession:	NP_000307
Pathways:	Regulation of Carbohydrate Metabolic Process

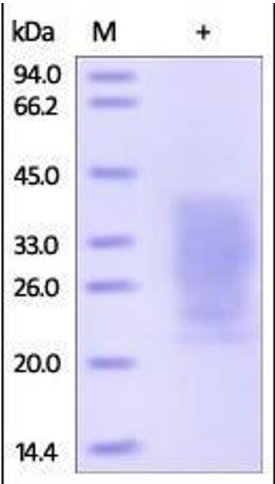
Application Details

Restrictions:	For Research Use only
---------------	-----------------------

Handling

Format:	Lyophilized
Buffer:	PBS, pH 7.4
Handling Advice:	Please avoid repeated freeze-thaw cycles.
Storage:	-20 °C
Storage Comment:	No activity loss was observed after storage at: In lyophilized state for 1 year (4 °C), After reconstitution under sterile conditions for 3 months (-70 °C).

Images



SDS-PAGE

Image 1. Human PTH1R, His Tag on SDS-PAGE under reducing (R) condition. The gel was stained overnight with Coomassie Blue. The purity of the protein is greater than 95%.