

Datasheet for ABIN2181697  
**ROR1 Protein (AA 30-403) (His tag)**



[Go to Product page](#)

2 Images

## Overview

|                               |                                             |
|-------------------------------|---------------------------------------------|
| Quantity:                     | 100 µg                                      |
| Target:                       | ROR1                                        |
| Protein Characteristics:      | AA 30-403                                   |
| Origin:                       | Human                                       |
| Source:                       | HEK-293 Cells                               |
| Protein Type:                 | Recombinant                                 |
| Purification tag / Conjugate: | This ROR1 protein is labelled with His tag. |

## Product Details

|                  |                                                                                                                                                                                                          |
|------------------|----------------------------------------------------------------------------------------------------------------------------------------------------------------------------------------------------------|
| Sequence:        | AA 30-403                                                                                                                                                                                                |
| Characteristics: | This protein carries a polyhistidine tag at the C-terminus. The protein has a calculated MW of 43.5 kDa. The protein migrates as 55-66 kDa under reducing (R) condition (SDS-PAGE) due to glycosylation. |
| Purity:          | >95 % as determined by SDS-PAGE.                                                                                                                                                                         |
| Sterility:       | 0.22 µm filtered                                                                                                                                                                                         |
| Endotoxin Level: | Less than 1.0 EU per µg by the LAL method.                                                                                                                                                               |

## Target Details

|                   |                                        |
|-------------------|----------------------------------------|
| Target:           | ROR1                                   |
| Alternative Name: | ROR1 ( <a href="#">ROR1 Products</a> ) |

## Target Details

---

**Background:** Tyrosine-protein kinase transmembrane receptor ROR1 is also known as Neurotrophic tyrosine kinase, receptor-related 1 (NTRKR1), which belongs to the protein kinase superfamily or tyrosine protein kinase family or ROR subfamily. ROR1 contains 1 FZ (frizzled) domain, 1 Ig-like C2-type (immunoglobulin-like) domain, 1 kringle domain, 1 protein kinase domain. ROR1 is expressed at high levels during early embryonic development. The expression levels drop strongly around day 16 and there are only very low levels in adult tissues. Isoform Short is strongly expressed in fetal and adult CNS and in a variety of human cancers, including those originating from CNS or PNS neuroectoderm. ROR1 could interact with casein kinase 1 epsilon (CK1ε) to activate phosphoinositide 3-kinase-mediated AKT phosphorylation and cAMP-response-element-binding protein (CREB), which was associated with enhanced tumor-cell growth.

---

**Molecular Weight:** 43.9 kDa

---

**NCBI Accession:** [NP\\_005003](#)

---

**Pathways:** [RTK Signaling](#), [WNT Signaling](#), [Nuclear Receptor Transcription Pathway](#), [Steroid Hormone Mediated Signaling Pathway](#), [Regulation of Lipid Metabolism by PPARalpha](#)

## Application Details

---

**Restrictions:** For Research Use only

## Handling

---

**Format:** Lyophilized

---

**Buffer:** PBS, pH 7.4

---

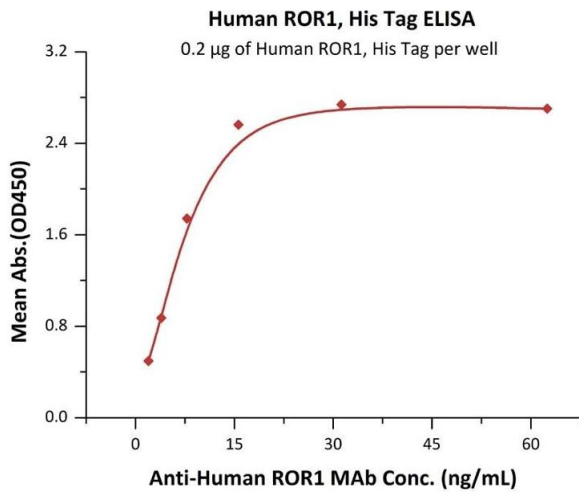
**Handling Advice:** Please avoid repeated freeze-thaw cycles.

---

**Storage:** -20 °C

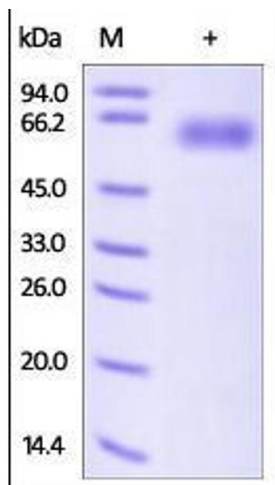
---

**Storage Comment:** No activity loss was observed after storage at: In lyophilized state for 1 year (4 °C), After reconstitution under sterile conditions for 3 months (-70 °C).



**ELISA**

**Image 1.** Immobilized Human / Cynomolgus / Rhesus macaque ROR1, His Tag (ABIN2181698, ABIN2181697) at 2 µg/mL (100 µL/well) can bind A ROR1 MAb with a linear range of 0.5-8 ng/mL (QC tested).



**SDS-PAGE**

**Image 2.** Human ROR1, His Tag on SDS-PAGE under reducing (R) condition. The gel was stained overnight with Coomassie Blue. The purity of the protein is greater than 95%.