

Datasheet for ABIN2181763
SIGLEC6 Protein (AA 16-320) (Fc Tag)



[Go to Product page](#)

1 Image

Overview

Quantity:	100 µg
Target:	SIGLEC6
Protein Characteristics:	AA 16-320
Origin:	Human
Source:	HEK-293 Cells
Protein Type:	Recombinant
Purification tag / Conjugate:	This SIGLEC6 protein is labelled with Fc Tag.

Product Details

Sequence:	AA 16-320
Characteristics:	This protein carries a human IgG1 Fc tag at the C-terminus. The protein has a calculated MW of 60.3 kDa. As a result of glycosylation, the protein migrates as 80-90 kDa under reducing (R) condition, and 160-180 kDa under non-reducing (NR) condition (SDS-PAGE).
Purity:	>90 % as determined by SDS-PAGE.
Sterility:	0.22 µm filtered
Endotoxin Level:	Less than 1.0 EU per µg by the LAL method.

Target Details

Target:	SIGLEC6
Alternative Name:	Siglec-6 (SIGLEC6 Products)

Target Details

Background: Sialic acid-binding Ig-like lectin 6 (SIGLEC6) is also known as CD antigen CD327, CD33 antigen-like 1 (CD33L or CD33L1), Obesity-binding protein 1 (OB-BP1). SIGLEC6 belongs to the immunoglobulin superfamily and SIGLEC (sialic acid binding Ig-like lectin) family, which contains two Ig-like C2-type (immunoglobulin-like) domains and one Ig-like V-type (immunoglobulin-like) domain. SIGLEC6 mediates sialic-acid dependent binding to cells. SIGLEC6 binds to alpha-2,6-linked sialic acid. The sialic acid recognition site may be masked by cis interactions with sialic acids on the same cell surface.

Molecular Weight: 60.3 kDa

Application Details

Restrictions: For Research Use only

Handling

Format: Lyophilized

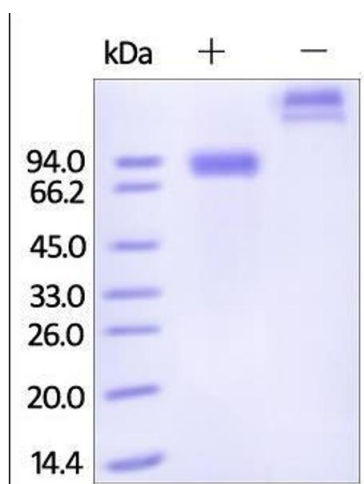
Buffer: 50 mM Tris, 100 mM Glycine, 150 mM NaCl, pH 7.5

Handling Advice: Please avoid repeated freeze-thaw cycles.

Storage: -20 °C

Storage Comment: No activity loss was observed after storage at: In lyophilized state for 1 year (4 °C), After reconstitution under sterile conditions for 3 months (-70 °C).

Images



SDS-PAGE

Image 1. Human Siglec-6, Fc Tag on SDS-PAGE under reducing (R) and no-reducing (NR) conditions. The gel was stained overnight with Coomassie Blue. The purity of the protein is greater than 92%.