

Datasheet for ABIN2181773

SIRPG Protein (AA 29-364) (Fc Tag)**2** Images[Go to Product page](#)

Overview

Quantity:	100 µg
Target:	SIRPG
Protein Characteristics:	AA 29-364
Origin:	Human
Source:	HEK-293 Cells
Protein Type:	Recombinant
Purification tag / Conjugate:	This SIRPG protein is labelled with Fc Tag.

Product Details

Sequence:	AA 29-364
Characteristics:	This protein carries a human IgG1 Fc tag at the C-terminus. The protein has a calculated MW of 63.7 kDa. The protein migrates as 68-75 kDa under reducing (R) condition (SDS-PAGE) due to glycosylation.
Purity:	>95 % as determined by SDS-PAGE.
Sterility:	0.22 µm filtered
Endotoxin Level:	Less than 1.0 EU per µg by the LAL method.

Target Details

Target:	SIRPG
Alternative Name:	SIRP gamma (SIRPG Products)

Target Details

Background: Signal-regulatory protein gamma (SIRPG or SIRP-gamma) is also known as CD172 antigen-like family member B (CD172g), Signal-regulatory protein beta-2 (SIRPB2), is a single-pass type I membrane protein. SIRPG is expressed on CD4+ T-cells, CD8+ T-cells, CD56-bright natural killer (NK) cells, CD20+ cells, and all activated NK cells. SIRPG interacts with CD47. On binding with CD47, CD172g mediates cell-cell adhesion.

Molecular Weight: 63.7 kDa

Application Details

Restrictions: For Research Use only

Handling

Format: Lyophilized

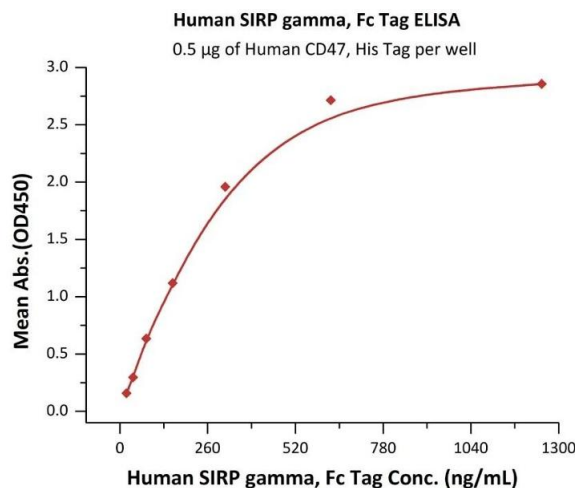
Buffer: 50 mM Tris, 100 mM Glycine, pH 7.5

Handling Advice: Please avoid repeated freeze-thaw cycles.

Storage: -20 °C

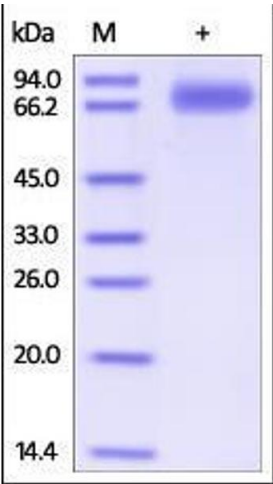
Storage Comment: No activity loss was observed after storage at: In lyophilized state for 1 year (4 °C), After reconstitution under sterile conditions for 3 months (-70 °C).

Images



ELISA

Image 1. Immobilized Human CD47, His Tag (ABIN2180804, ABIN2180803) at 5 µg/mL (100 µL/well) can bind Human SIRP gamma, Fc Tag (ABIN2181774, ABIN2181773) with a linear range of 20-312 ng/mL (QC tested).



SDS-PAGE

Image 2. Human SIRP gamma, Fc Tag on SDS-PAGE under reducing (R) condition. The gel was stained overnight with Coomassie Blue. The purity of the protein is greater than 95%.