

Datasheet for ABIN228595 **anti-IGF1R antibody (C-Term)**

3 Images



[Go to Product page](#)

Overview

Quantity:	100 µL
Target:	IGF1R
Binding Specificity:	C-Term
Reactivity:	Human, Mouse, Rat, Monkey
Host:	Rabbit
Clonality:	Polyclonal
Conjugate:	This IGF1R antibody is un-conjugated
Application:	Western Blotting (WB), Immunohistochemistry (IHC), Immunohistochemistry (Paraffin-embedded Sections) (IHC (p)), Immunoprecipitation (IP)

Product Details

Immunogen:	Synthetic peptide corresponding to the carboxy-terminal residues of human IGF-IR b (KLH). Type of Immunogen: Synthetic peptide
Isotype:	IgG
Specificity:	Recognizes endogenous levels of human IGF-IR beta at 95kD. It does not cross-react with insulin receptor.
Purification:	Immunoaffinity purified

Target Details

Target:	IGF1R
---------	-------

Target Details

Alternative Name:	IGF1R / IGF1 Receptor (IGF1R Products)
Background:	Name/Gene ID: IGF1R Subfamily: Insulin receptor Family: Protein Kinase Synonyms: IGF1R, CD221 antigen, CD221, IGF1 Receptor, IGFR, IGF-I receptor, Soluble IGF1R variant 1, Soluble IGF1R variant 2, Type 1 IGF receptor, IGFI, JTK13
Gene ID:	3480
UniProt:	P08069
Pathways:	RTK Signaling , Regulation of Hormone Metabolic Process , Regulation of Hormone Biosynthetic Process , Autophagy

Application Details

Application Notes:	Approved: IHC, IHC-P (1:150), IP (1:100), WB (1:1000) Usage: Suitable for use in ELISA, Western Blot, Immunohistochemistry, Immunocytochemistry and Immunoprecipitation. Western Blot: 1:1000. Immunohistochemistry (Paraffin): 1:600. Immunoprecipitation: 1:100.
Comment:	Target Species of Antibody: Human
Restrictions:	For Research Use only

Handling

Format:	Liquid
Concentration:	Lot specific
Buffer:	10 mM HEPES, pH 7.5, 150 mM sodium chloride, 0.1 mg/mL BSA, 50 % glycerol.
Handling Advice:	Avoid repeat freeze-thaw cycles.
Storage:	4 °C,-20 °C
Storage Comment:	Short term: 4°C. Long term: Store at -20°C. Avoid freeze-thaw cycles.

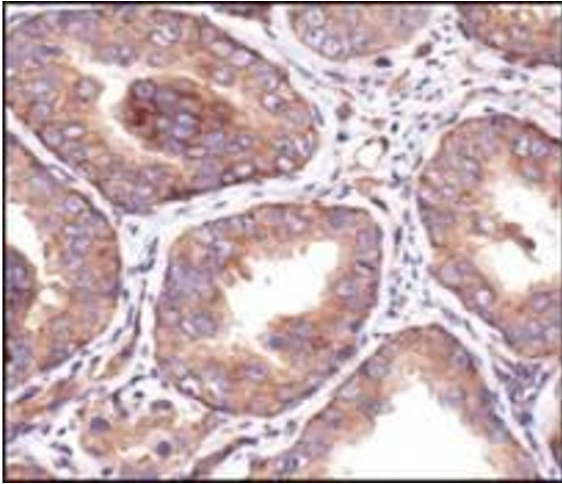


Image 1.

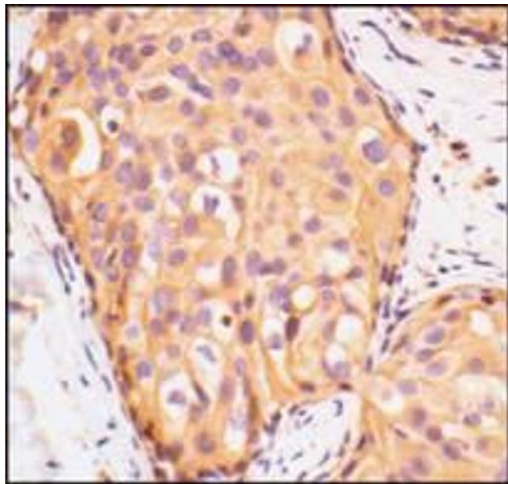


Image 2.

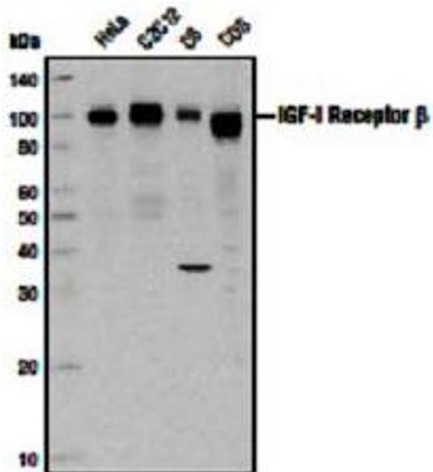


Image 3.