

Datasheet for ABIN229300  
**anti-SPHK2 antibody (C-Term)**



[Go to Product page](#)

1 Image

## Overview

Quantity:	100 µg
Target:	SPHK2
Binding Specificity:	C-Term
Reactivity:	Human, Mouse, Rat
Host:	Rabbit
Clonality:	Polyclonal
Conjugate:	This SPHK2 antibody is un-conjugated
Application:	Western Blotting (WB)

## Product Details

Immunogen:	Synthetic peptide derived from the C-terminal of Sphingosine Kinase 2. Type of Immunogen: Synthetic peptide
Purification:	Purified

## Target Details

Target:	SPHK2
Alternative Name:	SPHK2 ( <a href="#">SPHK2 Products</a> )
Background:	Name/Gene ID: SPHK2 Subfamily: Sphingosine Family: Non-protein Kinase

## Target Details

---

Synonyms: SPHK2, SK-2, Sk2, Sphingosine kinase type 2, SPK-2, Sphingosine kinase 2, SPHK2L, SK 2, SPK 2

Gene ID: 56848

Pathways: [VEGF Signaling](#)

## Application Details

---

Application Notes: Optimal working dilution should be determined by the investigator.

Restrictions: For Research Use only

## Handling

---

Format: Liquid

Concentration: Lot specific

Buffer: PBS, 0.08 % sodium azide.

Preservative: Sodium azide

Precaution of Use: This product contains Sodium azide: a POISONOUS AND HAZARDOUS SUBSTANCE which should be handled by trained staff only.

Handling Advice: Aliquot to Avoid freeze/thaw cycles. Store undiluted.

Storage: -20 °C

Storage Comment: Store at -20°C. Aliquot to avoid freeze-thaw cycles. Store undiluted.

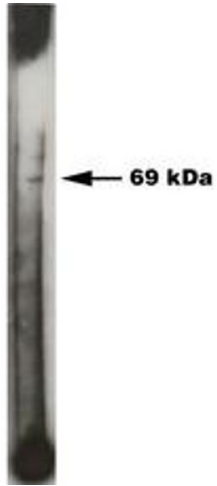


Image 1.