

Datasheet for ABIN232120
anti-PPARG antibody



[Go to Product page](#)

3 Images

Overview

Quantity:	0.1 mL
Target:	PPARG
Reactivity:	Human
Host:	Mouse
Clonality:	Monoclonal
Conjugate:	This PPARG antibody is un-conjugated
Application:	Western Blotting (WB), ELISA, Immunohistochemistry (IHC), Immunofluorescence (IF)

Product Details

Immunogen:	Recombinant human PPARG. Type of Immunogen: Recombinant protein
Clone:	8D1H8F4
Isotype:	IgG1
Specificity:	Ni-NTA purified truncated recombinant PPARG expressed in E. Coli strain BL21 (DE3)

Target Details

Target:	PPARG
Alternative Name:	PPARG / PPAR Gamma (PPARG Products)
Background:	Name/Gene ID: PPARG Subfamily: NR1 Thyroid hormone-like

Target Details

Family: NHR

Synonyms: PPARG, NR1C3, PPAR gamma, PPAR gamma 2, PPARG1, PPARG2, PPARgamma, CIMT1, GLM1, PPAR-gamma

Gene ID: 5468

UniProt: [P37231](#)

Pathways: [MAPK Signaling](#), [Nuclear Receptor Transcription Pathway](#), [Steroid Hormone Mediated Signaling Pathway](#), [Negative Regulation of Hormone Secretion](#), [Carbohydrate Homeostasis](#), [Regulation of Lipid Metabolism by PPARalpha](#), [Positive Regulation of Endopeptidase Activity](#), [Brown Fat Cell Differentiation](#), [Positive Regulation of fat Cell Differentiation](#)

Application Details

Application Notes: Approved: ELISA (1:10000), IF, IHC, WB (1:500 - 1:2000)

Comment: Target Species of Antibody: Human

Restrictions: For Research Use only

Handling

Format: Liquid

Concentration: Lot specific

Buffer: Ascites.

Storage: 4 °C, -20 °C

Storage Comment: Short term: 4°C. Long term: Store at -20°C. Avoid freeze-thaw cycles.

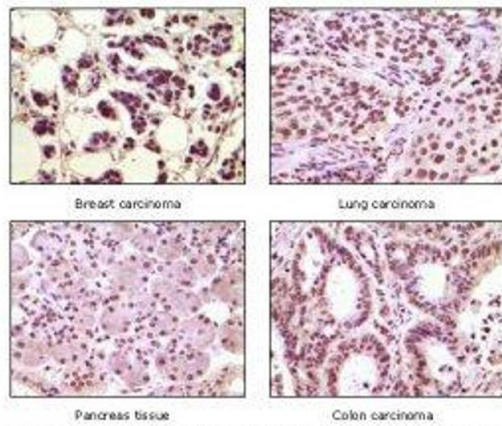


Figure 2: Immunohistochemical analysis of paraffin-embedded human carcinoma and Normal tissue, showing nuclear localization using PPARG antibody with DAB staining.

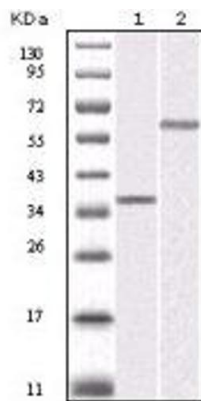


Figure 1: Western blot analysis using anti-Human PPARG monoclonal antibody against truncated PPARG recombinant protein (1), K562 cell lysate (2).



Figure 3. Confocal analysis of A431 cells using PPAR-γ antibody showing nuclear staining

Image 1.

Image 2.

Image 3.