



Datasheet for ABIN233206

anti-Retinoblastoma Protein (Rb) antibody (AA 251-268)



[Go to Product page](#)

1 Image

Overview

Quantity:	200 µL
Target:	Retinoblastoma Protein (Rb) (Rb Protein)
Binding Specificity:	AA 251-268
Reactivity:	Human, Mouse, Rat, Cow, Dog, Monkey, Pig, Bat, Horse
Host:	Rabbit
Clonality:	Polyclonal
Conjugate:	This Retinoblastoma Protein (Rb) antibody is un-conjugated
Application:	Western Blotting (WB)

Product Details

Immunogen:	A synthetic peptide corresponding to amino acids 251-268 (RTPRRGQNRSARIAKQLE) of human Rb, GenBank no. gb AAN64133.1 . This immunogen sequence is 100% conserved in mouse, rat, dog and horse Rb. Percent identity by BLAST analysis: Human, Chimpanzee, Gorilla, Gibbon, Monkey, Marmoset, Mouse, Rat, Dog, Bat, Bovine, Elephant, Panda, Horse, Pig (100%), Rabbit, Opossum (89%). Type of Immunogen: Synthetic peptide
Isotype:	IgG
Specificity:	In Jurkat, a 110 kD band is observed.
Predicted Reactivity:	Percent identity by BLAST analysis: Human, Chimpanzee, Gorilla, Gibbon, Monkey, Marmoset, Mouse, Rat, Dog, Bat, Bovine, Elephant, Panda, Horse, Pig (100%) Rabbit, Opossum (89%).

Product Details

Purification: Protein G purified

Target Details

Target: Retinoblastoma Protein (Rb) (Rb Protein)

Alternative Name: RB1 / Retinoblastoma / RB ([Rb Protein Products](#))

Background: Name/Gene ID: RB1

Synonyms: RB1, p105-Rb, Osteosarcoma, PRb, Retinoblastoma, Retinoblastoma 1, OSRC, RB, Pp110

Gene ID: 5925

UniProt: [P06400](#)

Pathways: [Mitotic G1-G1/S Phases](#)

Application Details

Application Notes: Approved: WB (1:200 - 1:1000)

Not recommended for: IHC-P

Comment: Target Species of Antibody: Human

Restrictions: For Research Use only

Handling

Format: Liquid

Concentration: Lot specific

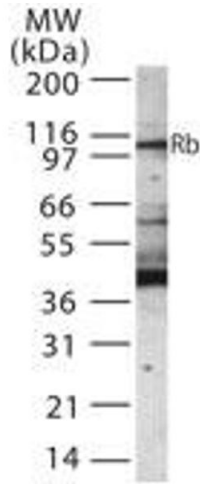
Buffer: PBS, 0.2 % gelatin, 0.05 % sodium azide.

Preservative: Sodium azide

Precaution of Use: This product contains Sodium azide: a POISONOUS AND HAZARDOUS SUBSTANCE which should be handled by trained staff only.

Storage: 4 °C, -80 °C

Storage Comment: Short term: 4°C
Long term: -70°C.



Western Blotting

Image 1.