

Datasheet for ABIN233822

anti-UBE2J1 antibody

4 Images

[Go to Product page](#)

Overview

Quantity:	100 µg
Target:	UBE2J1
Reactivity:	Human
Host:	Rabbit
Clonality:	Polyclonal
Conjugate:	This UBE2J1 antibody is un-conjugated
Application:	Western Blotting (WB), ELISA, Immunoprecipitation (IP)

Product Details

Immunogen:	This affinity purified antibody was prepared from whole rabbit serum produced by repeated immunizations with a synthetic peptide corresponding to residues near the amino terminus of the human Ube2j1 protein.
Isotype:	IgG
Characteristics:	Concentration Definition: by UV absorbance at 280 nm

Target Details

Target:	UBE2J1
Alternative Name:	UBE2J1 (UBE2J1 Products)
Background:	This antibody is designed, produced, and is suitable for Cancer, Immunology and Nuclear Signaling research. Ube2j1 and Ube2j2 are homologs of the yeast ubiquitin-conjugating enzyme UBC6, which catalyzes the covalent attachment of ubiquitin to other proteins. These proteins

Target Details

constitute a distinct family of ubiquitin-conjugating enzymes sharing a conserved non-canonical active site sequence and a C-terminal transmembrane domain. By analogy with yeast UBC6, Ube2j1 and Ube2j2 are localized to the endoplasmic reticulum and seem to function in the selective degradation of misfolded membrane proteins and in general mediation of the stress response.

Synonyms: Non-canonical ubiquitin-conjugating enzyme 1, Yeast ubiquitin-conjugating enzyme UBC6 homolog E

Gene ID: 51465, 37577122

UniProt: [Q9Y385](#)

Application Details

Application Notes: This affinity purified antibody has been tested for use in ELISA, western blotting and immunoprecipitation. Specific conditions for reactivity should be optimized by the end user. Expect a band approximately 35-40 kDa in size corresponding to Ube2j1 protein by western blotting in the appropriate cell lysate or extract.

Restrictions: For Research Use only

Handling

Format: Liquid

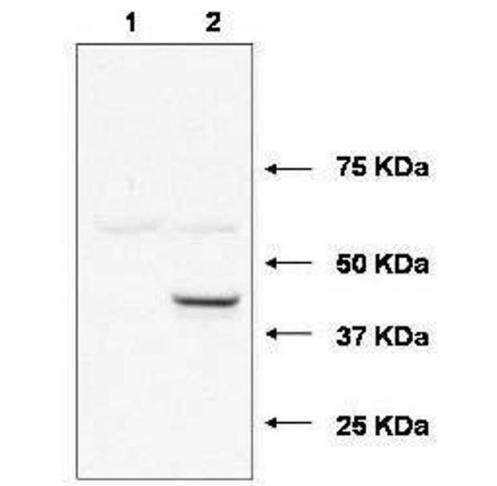
Concentration: 0.71 mg/mL

Buffer: 0.02 M Potassium Phosphate, 0.15 M Sodium Chloride, pH 7.2

Preservative: Sodium azide

Precaution of Use: This product contains sodium azide: a POISONOUS AND HAZARDOUS SUBSTANCE which should be handled by trained staff only.

Storage: -20 °C



Western Blotting

Image 1.

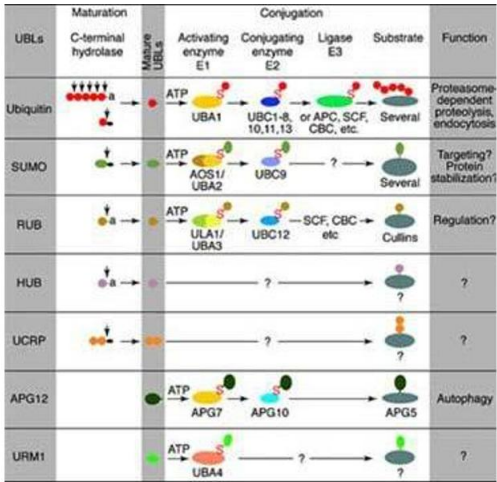
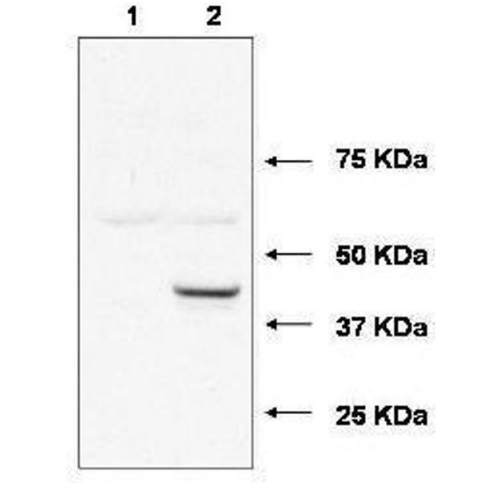


Image 2. Conjugation pathways for ubiquitin and ubiquitin-like modifiers (UBLs). Most modifiers mature by proteolytic processing from inactive precursors (



Western Blotting

Image 3. Western blot using affinity purified anti-Ube2j1 antibody shows detection of Ube2j1 in 293 cells over-expressing Myc-Ube2j1 (Lane 2). Lane 1 contains lysate from mock-transfected 293 cells. Personal Communication, A. Weissman & T. Shang, CCR-NCI, Frederick, MD

Please check the [product details page](#) for more images. Overall 4 images are available for ABIN233822.