



[Go to Product page](#)

Datasheet for ABIN233828

## anti-Cripto-1 antibody (Internal Region)

1 Image

5 Publications

### Overview

Quantity:	100 µg
Target:	Cripto-1 (TDGF1.3)
Binding Specificity:	Internal Region
Reactivity:	Human
Host:	Rabbit
Clonality:	Polyclonal
Conjugate:	This Cripto-1 antibody is un-conjugated
Application:	ELISA, Western Blotting (WB)

### Product Details

Immunogen:	This affinity purified antibody was prepared from whole rabbit serum produced by repeated immunizations with a synthetic peptide corresponding to an sequence of human Cripto-1 protein.
Isotype:	IgG
Characteristics:	Concentration Definition: by UV absorbance at 280 nm

### Target Details

Target:	Cripto-1 (TDGF1.3)
Alternative Name:	Cripto-1 TDGF1 ( <a href="#">TDGF1.3 Products</a> )
Background:	This antibody is designed, produced, and is suitable for Cancer, Immunology and Nuclear Signaling research. Human Cripto-1 (CR-1), also known as Teratocarcinoma-derived growth

## Target Details

---

factor 1 (TDGF1), is a member of the epidermal growth factor (EGF)-GFC family and has been implicated in both embryogenesis and carcinogenesis. During early vertebrate development, CR-1 functions as a co-receptor for Nodal, a transforming growth factor b (TGFb) family member, and is essential for mesoderm and endoderm formation and anterior-posterior and left-right axis establishment. In adult tissues, CR-1 is expressed at a low level in all stages of mammary gland development, and expression increases during pregnancy and lactation. Over-expression of CR-1 in mouse mammary epithelial cells leads to their transformation in vitro, and when injected in mammary glands, CR-1 produces ductal hyperplasias.

Synonyms: Cripto1 antibody, Cripto1 growth factor antibody, Epidermal growth factor like cripto protein CR1 antibody, TDGF 1 antibody

---

Gene ID: 6997, 4507425

---

UniProt: [P13385](#)

## Application Details

---

Application Notes: This affinity purified antibody has been tested for use in ELISA and western blotting. Specific conditions for reactivity should be optimized by the end user. Expect a band approximately 21 kDa in size corresponding to Cripto-1 by western blotting in the appropriate cell lysate or extract. Cripto-1 is reported as a 188 amino acid protein with a molecular weight of 21.1 kDa.

---

Restrictions: For Research Use only

## Handling

---

Format: Liquid

---

Concentration: 0.66 mg/mL

---

Buffer: 0.02 M Potassium Phosphate, 0.15 M Sodium Chloride, pH 7.2

---

Preservative: Sodium azide

---

Precaution of Use: This product contains sodium azide: a POISONOUS AND HAZARDOUS SUBSTANCE which should be handled by trained staff only.

---

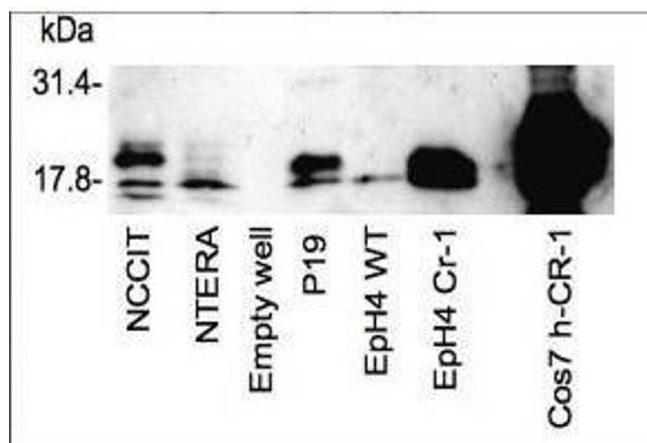
Storage: -20 °C

## Publications

---

Product cited in: Gui, Xiong, Yang, Li, Huang: "Effects of acupuncture on LIF and IL-12 in rats of implantation failure." in: **American journal of reproductive immunology (New York, N.Y. : 1989)**, Vol. 67,

## Images

**Western Blotting**

**Image 1.** Western blot using affinity purified anti-Cripto-1 antibody shows detection of endogenous and transfected Cripto-1 from mouse and human sources. The Cripto-1 band appears above the 17.8 kDa marker. Endogenous detection is shown using mouse P19 embryonal carcinoma cells and human NCCIT testicular embryonal carcinoma cells. EpH4 CR-1 is a mouse mammary epithelial cell line stably expressing mouse Cripto-1. NTERA cells are human embryonal carcinoma cells that, when overgrown, differentiate and lose Cripto-1 expression. COS7 cells transfected with human Cripto-1 expression vector were used as a positive control and EpH4 WT cells were used as a negative control. A non-specific band at 45kDa may be present in some preparations. The primary antibody was used at a 1:500 dilution. Personal communication, C. Bianco, NCI, Bethesda, MD