



[Go to Product page](#)

Datasheet for ABIN234961
anti-D-Dimer antibody

1 Image

Overview

Quantity:	1 mg
Target:	D-Dimer
Reactivity:	Human
Host:	Mouse
Clonality:	Monoclonal
Conjugate:	This D-Dimer antibody is un-conjugated
Application:	ELISA, Western Blotting (WB), Protein Assay (PrA)

Product Details

Immunogen:	Homogenized fibrin clot
Clone:	DD1
Isotype:	IgG2a
Specificity:	Recognizes Human D-dimer, a specific degradation product of cross-linked fibrin, and high molecular weight fibrin degradation products. No cross-reaction with D-monomer.
Characteristics:	MAB to D-Dimer, Monoclonal antibody to Human D-dimer (DD)
Purification:	Protein G Sepharose Chromatography. Ascites
Purity:	> 95 % pure (SDS PAGE)

Target Details

Target:	D-Dimer
---------	---------

Target Details

Alternative Name: D-Dimer (DD) ([D-Dimer Products](#))

Application Details

Application Notes: Suitable for use in ELISA and Western blot. For sandwich immunoassay, plasma samples should be diluted with 10mM Tris/HCl buffer, pH 7.5 containing 1M NaCl and 0.1 % Tween 20. To avoid non-specific binding, the final NaCl concentration in plasma samples should be 0.5M or more. Each laboratory should determine an optimum working titer for use in its particular application. Other applications have not been tested but use in such assays should not necessarily be excluded.

Restrictions: For Research Use only

Handling

Format: Liquid

Buffer: PBS, pH 7.4, 0.1 % Sodium azide

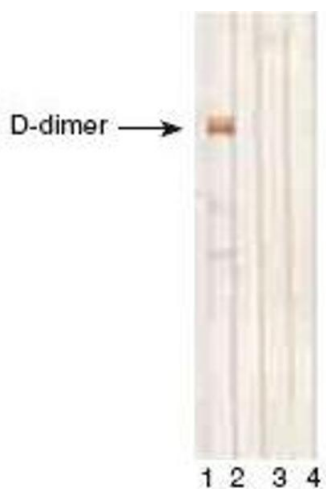
Preservative: Sodium azide

Precaution of Use: This product contains sodium azide: a POISONOUS AND HAZARDOUS SUBSTANCE which should be handled by trained staff only.

Storage: 4 °C

Storage Comment: Store at 2-8 °C.

Images



Western Blotting

Image 1. D-dimer, D-monomer and fibrinogen immunodetection by MAb DD1 in Western blotting. Lane 1: D-dimer. Lane 2: D-monomer. Lane 3: fibrinogen. Lane 4: D-dimer treated with mercaptoethanol.