

Datasheet for ABIN235668

**anti-Influenza Nucleoprotein antibody (Influenza B Virus)**[Go to Product page](#)**1** Image

## Overview

Quantity:	1 mg
Target:	Influenza Nucleoprotein (NP)
Reactivity:	Influenza B Virus
Host:	Mouse
Clonality:	Monoclonal
Conjugate:	Un-conjugated
Application:	ELISA, Western Blotting (WB), Protein Assay (PrA)

## Product Details

Immunogen:	Purified Influenza virus type B
Clone:	B267M
Isotype:	IgG1
Specificity:	Nucleoprotein (NP) of Influenza virus type B
Characteristics:	MAb to Influenza B (NP), Monoclonal antibody to Influenza B Nucleoprotein
Purification:	Protein G Chromatography. Ascites
Purity:	> 95 % pure (SDS PAGE)

## Target Details

Target:	Influenza Nucleoprotein (NP)
Alternative Name:	Influenza B Nucleoprotein ( <a href="#">NP Products</a> )

## Target Details

Target Type: Influenza Protein

## Application Details

Application Notes: Suitable for use in ELISA and Western blot. Each laboratory should determine an optimum working titer for use in its particular application. Other applications have not been tested but use in such assays should not necessarily be excluded.

Restrictions: For Research Use only

## Handling

Format: Liquid

Buffer: PBS, pH 7.4, 0.1 % Sodium azide

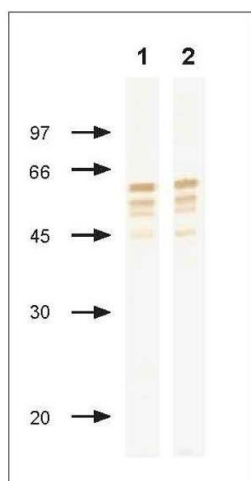
Preservative: Sodium azide

Precaution of Use: This product contains sodium azide: a POISONOUS AND HAZARDOUS SUBSTANCE which should be handled by trained staff only.

Storage: 4 °C

Storage Comment: Store at 2-8 °C.

## Images



### Western Blotting

**Image 1.** NP of Influenza B virus Immunodetection using anti-NP monoclonal antibody in Western blotting after PAGE in reducing conditions. Anti-mouse IgG conjugated with HRP was used for MAb NP complex visualization. Antibody: ABIN235668 (5ug/ml) Antigen: Influenza B/Tokio/53/99 (1ug/lane)