



[Go to Product page](#)

Datasheet for ABIN238343

anti-LAT2 antibody (AA 91-243)

2 Images

Overview

Quantity:	0.1 mg
Target:	LAT2
Binding Specificity:	AA 91-243
Reactivity:	Human
Host:	Rabbit
Clonality:	Polyclonal
Conjugate:	This LAT2 antibody is un-conjugated
Application:	Western Blotting (WB), Immunohistochemistry (Paraffin-embedded Sections) (IHC (p))

Product Details

Immunogen:	Recombinant cytoplasmic domain (aa 91-243) of human NTAL.
Specificity:	The polyclonal antibody recognizes the defined epitope (aa 91-243) of human Non-T cell Activation Linker (NTAL), also known as LAB (linker of activated B cells), a 30 kDa transmembrane adaptor protein present in membrane microdomains (rafts) of B cells, NK cells and myeloid cells.
Purification:	Protein-A affinity chromatography.

Target Details

Target:	LAT2
Alternative Name:	LAT2 / WBSCR15 (LAT2 Products)
Background:	NTAL (Non-T cell activation linker), also known as LAB (Linker for activation of B cells), is a 30

Target Details

kDa double-palmitoylated transmembrane adaptor protein expressed by B cells, NK cells, mast cells and macrophages. It is a negative regulator of early stages of BCR-dependent B cell signaling and serves as a negative regulator also in mast cells. However, in mast cells, NTAL also contributes to some activation processes, partially overlapping with LAT function. Synonyms: HSPC046, LAB, LLinker for activation of B-cells, Linker for activation of T-cells family member 2, Membrane-associated adapter molecule, NTAL, Non-T-cell activation linker, WBS15, WBSR5, Williams-Beuren syndrome chromosomal region 15 protein

Gene ID: 7462

NCBI Accession: [NP_054865](#)

UniProt: [Q9GZY6](#)

Pathways: [Fc-epsilon Receptor Signaling Pathway](#), [BCR Signaling](#)

Application Details

Application Notes: Suitable for Western blot under Non-Reducing conditions: 15 % separating SDS-PAGE gel. Recommended dilution: 1 µg/mL, incubation 60 min in RT, or overnight at 4 °C. Positive control: RAMOS human lymphoma cell line. THP-1 human monocytic leukemia cell line. Negative control: JURKAT human T cell leukemia cell line. Sample preparation: Resuspend approx. 50 mil. cells in 1 mL cold Lysis buffer (1 % laurylmaltoside in 20 mM Tris/Cl, 100 mM NaCl pH 8.2, 50 mM NaF including Proteaseinhibitor Cocktail). Incubate 60 min on ice. Centrifuge to remove cell debris. Mix lysate with non-reducing SDS-PAGE sample buffer. Immunohistochemistry on paraffin sections: 10 µg/mL. Positive tissue: spleen. Other applications not tested. Optimal dilutions are dependent on conditions and should be determined by the user.

Restrictions: For Research Use only

Handling

Concentration: 1.0 mg/mL

Buffer: PBS, pH 7.4 with 15 mM sodium azide as preservative.

Preservative: Sodium azide

Precaution of Use: This product contains sodium azide: a POISONOUS AND HAZARDOUS SUBSTANCE which should be handled by trained staff only.

Handling Advice: Avoid repeated freezing and thawing.

Handling

Storage: 4 °C/-20 °C

Storage Comment: Store the antibody undiluted at 2-8 °C for one month or (in aliquots) at -20 °C for longer.

Images

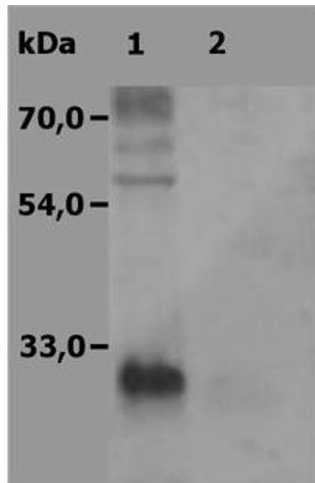


Image 1.

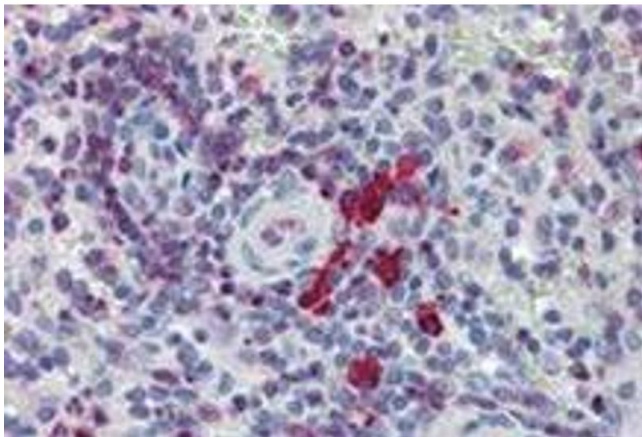


Image 2.