

Datasheet for ABIN238345  
**anti-LAT2 antibody (AA 30-203)**



[Go to Product page](#)

2 Images

## Overview

Quantity:	0.1 mg
Target:	LAT2
Binding Specificity:	AA 30-203
Reactivity:	Mouse, Rat
Host:	Rabbit
Clonality:	Polyclonal
Conjugate:	This LAT2 antibody is un-conjugated
Application:	Western Blotting (WB), Immunofluorescence (IF)

## Product Details

Immunogen:	Recombinant Mouse NTAL (aa 30-203).
Specificity:	This polyclonal antibody reacts with Non-T cell Activation Linker (NTAL), also known as LAB (linker of activated B cells), a 25 kDa transmembrane adaptor protein present in membrane microdomains (rafts) of B cells, NK cells and myeloid cells.
Purification:	Protein-A Affinity Chromatography

## Target Details

Target:	LAT2
Alternative Name:	LAT2 / WBSR15 ( <a href="#">LAT2 Products</a> )
Background:	NTAL (Non-T cell activation linker), also known as LAB (Linker for activation of B cells), is a 30 kDa double-palmitoylated transmembrane adaptor protein expressed by B cells, NK cells, mast

## Target Details

---

cells and macrophages. It is a negative regulator of early stages of BCR-dependent B cell signaling and serves as a negative regulator also in mast cells. However, in mast cells, NTAL also contributes to some activation processes, partially overlapping with LAT function. Synonyms: HSPC046, LAB, LLinker for activation of B-cells, Linker for activation of T-cells family member 2, Membrane-associated adapter molecule, NTAL, Non-T-cell activation linker, WBS15, WBSCR5, Williams-Beuren syndrome chromosomal region 15 protein

Gene ID: 56743

NCBI Accession: [NP\\_064428](#)

UniProt: [Q9JHL0](#)

Pathways: [Fc-epsilon Receptor Signaling Pathway](#), [BCR Signaling](#)

## Application Details

---

Application Notes: Western Blotting (Non-reducing conditions): Recommended dilution: 1 µg/mL Positive control: mouse spleen. Sample preparation: Mix lysate with non-reducing SDS-PAGE sample buffer. Immunocytochemistry. Other applications not tested. Optimal dilutions are dependent on conditions and should be determined by the user.

Restrictions: For Research Use only

## Handling

---

Concentration: 1.0 mg/mL

Buffer: PBS, pH ~7.4, 15 mM Sodium Azide

Preservative: Sodium azide

Precaution of Use: This product contains sodium azide: a POISONOUS AND HAZARDOUS SUBSTANCE which should be handled by trained staff only.

Handling Advice: Avoid repeated freezing and thawing.

Storage: 4 °C/-20 °C

Storage Comment: Store undiluted at 2-8 °C for one month or (in aliquots) at -20 °C for longer.

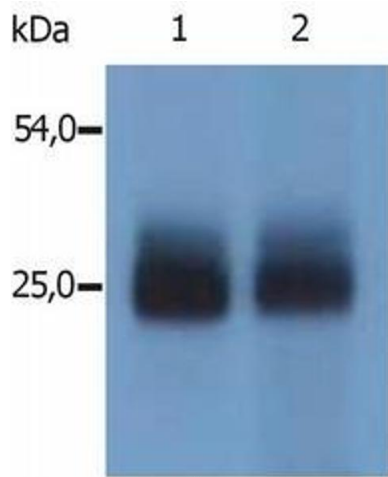


Image 1.

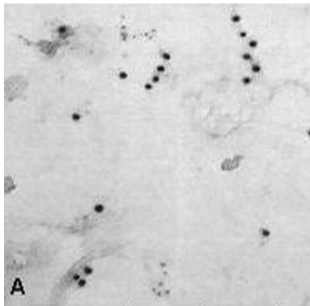


Fig. 2A Distribution of LAT and NTAL on mouse bone marrow-derived mast cells

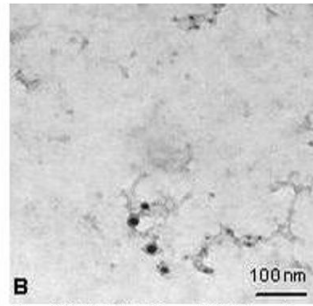


Fig. 2B Distribution of LAT and NTAL on rat basophilic leukemia cells

Image 2.