

Datasheet for ABIN238388

anti-Clathrin Heavy Chain (CLTC) (Heavy Chain) antibody[Go to Product page](#)**2** Images

Overview

Quantity:	0.1 mg
Target:	Clathrin Heavy Chain (CLTC)
Binding Specificity:	Heavy Chain
Reactivity:	Human, Mouse, Rat, Cow, Pig
Host:	Mouse
Clonality:	Monoclonal
Conjugate:	Un-conjugated
Application:	Western Blotting (WB), Immunofluorescence (IF), Flow Cytometry (FACS), Immunoprecipitation (IP), Enzyme Immunoassay (EIA)

Product Details

Clone:	BF-06
Isotype:	IgM
Specificity:	The antibody recognizes clathrin heavy chain, an ubiquitously expressed 180 kDa protein involved in receptor-mediated endocytosis.
Characteristics:	Synonyms: CLTC, CLH17, CLTCL2, KIAA0034, Membrane Vesicle Marker, Clathrin heavy chain on chromosome 17
Purification:	Ion exchange chromatography
Purity:	> 95 % (by SDS-PAGE)

Target Details

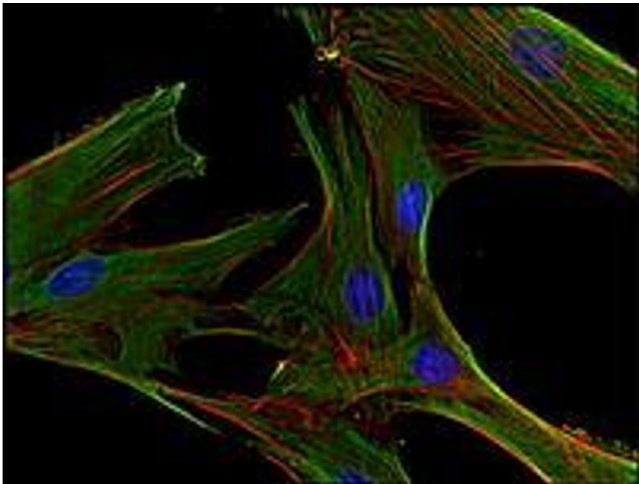
Target:	Clathrin Heavy Chain (CLTC)
Alternative Name:	Clathrin Heavy Chain (CLTC Products)
Background:	Clathrin is a submembrane protein that polymerizes into coat-like lattices, which results in membrane invagination. The basic oligomers are composed of three clathrin heavy chain (180 kDa) and three light chain (30 kDa) subunits and the process of polymerization is dynamically regulated by the light chains. Interaction of clathrin with the plasma membrane is mediated by adaptor proteins (AP1-4) specific for different cellular compartments. Another proteins, such as endophilin, epsin and amphiphysin are involved in membrane invagination and clathrin rearrangements. Finally, dynamin functions at the fission stage of clathrin-mediated endocytosis.Synonyms: CLH17, CLTC, CLTCL2, Clathrin heavy chain on chromosome 17, KIAA0034, Membrane Vesicle Marker
Gene ID:	1213
UniProt:	Q00610

Application Details

Application Notes:	Flow Cytometry: 2-5 µg/mL. Positive control: human blood leukocytes. Immunoprecipitation. Western Blotting. Immunocytochemistry. ELISA. Other applications not tested. Optimal dilutions are dependent on conditions and should be determined by the user.
Restrictions:	For Research Use only

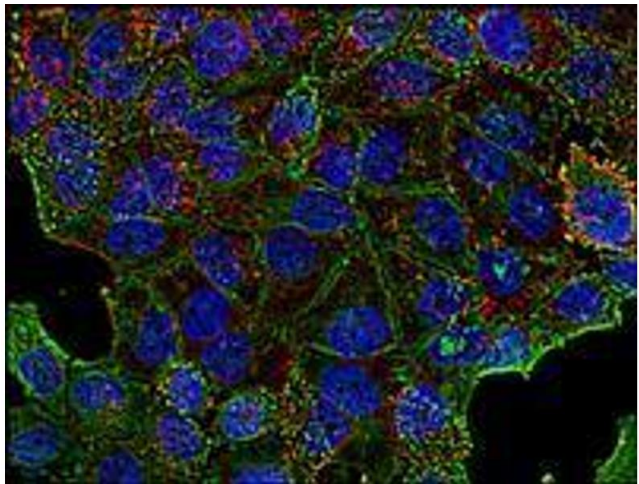
Handling

Concentration:	1.0 mg/mL
Buffer:	Tris buffered saline (TBS) with 15 mM sodium azide, approx. pH 8.0
Preservative:	Sodium azide
Precaution of Use:	This product contains sodium azide: a POISONOUS AND HAZARDOUS SUBSTANCE which should be handled by trained staff only.
Storage:	4 °C
Storage Comment:	Store the antibody at 2 - 8 °C. Do not freeze. Shelf life: one year from despatch.
Expiry Date:	12 months



Immunofluorescence

Image 1.



Immunofluorescence

Image 2.