

Datasheet for ABIN238504

**anti-SOS1 antibody**

3 Images

[Go to Product page](#)

## Overview

Quantity:	0.1 mg
Target:	SOS1
Reactivity:	Human, Mouse
Host:	Mouse
Clonality:	Monoclonal
Conjugate:	This SOS1 antibody is un-conjugated
Application:	Western Blotting (WB), Immunofluorescence (IF), Enzyme Immunoassay (EIA)

## Product Details

Immunogen:	Peptide corresponding to amino acids THPSMHRDGPPLLENAHSS of human Sos protein.
Clone:	SOS-1
Isotype:	IgG1
Specificity:	The antibody SOS-01 reacts with human Sos, an ubiquitously expressed 150 kDa intracellular protein.
Characteristics:	Synonyms: SOS-1, Son of sevenless homolog 1
Purification:	Protein A affinity chromatography.

## Target Details

Target:	SOS1
Alternative Name:	SOS1 ( <a href="#">SOS1 Products</a> )

## Target Details

Target Type:	Viral Protein
Background:	The guanine nucleotide exchange factor Sos (Son-of-sevenless) is a complex multidomain protein that activates the small GTPase Ras (H-Ras, K-Ras, N-Ras, but not functionally distinct R-Ras) in response to receptor tyrosine kinase stimulation. Nucleotide exchange activity of Sos is stimulated by allosteric Ras binding. By another (separable) guanine exchange factor domain Sos modulates activity of Rac/Rho GTPases. Sos thus integrates signals that affect both gene expression and cytoskeletal reorganization, the Sos-mediated Ras-activation and Rac activation differ in composition and stability of the formed complex.Synonyms: SOS-1, Son of sevenless homolog 1
Gene ID:	6654
UniProt:	<a href="#">Q07889</a>
Pathways:	<a href="#">RTK Signaling</a> , <a href="#">TCR Signaling</a> , <a href="#">Fc-epsilon Receptor Signaling Pathway</a> , <a href="#">EGFR Signaling Pathway</a> , <a href="#">Neurotrophin Signaling Pathway</a> , <a href="#">Hepatitis C</a> , <a href="#">Signaling Events mediated by VEGFR1 and VEGFR2</a> , <a href="#">Signaling of Hepatocyte Growth Factor Receptor</a> , <a href="#">BCR Signaling</a>

## Application Details

Application Notes:	Western Blotting under reducing conditions (1 µg/mL): Positive control: HeLa human cervix carcinoma cell line. Immunocytochemistry. ELISA.  Other applications not tested.  Optimal dilutions are dependent on conditions and should be determined by the user.
Restrictions:	For Research Use only

## Handling

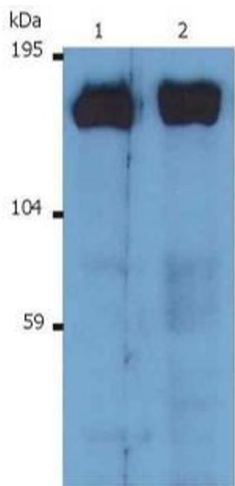
Concentration:	1.0 mg/mL
Buffer:	PBS, pH 7.4 with 15 mM sodium azide as preservative.
Preservative:	Sodium azide
Precaution of Use:	This product contains sodium azide: a POISONOUS AND HAZARDOUS SUBSTANCE which should be handled by trained staff only.
Storage:	4 °C/-20 °C
Storage Comment:	Store the antibody undiluted at 2-8 °C for one month or (in aliquots) at -20 °C for longer. Avoid freeze/thaw cycles.

Handling

Shelf life: One year from despatch.

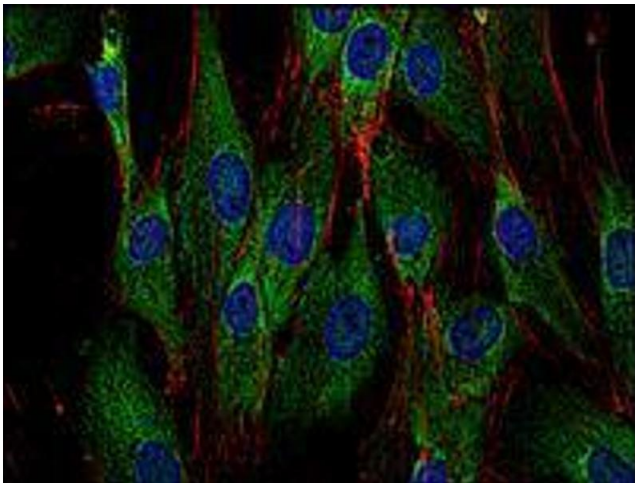
Expiry Date: 12 months

Images



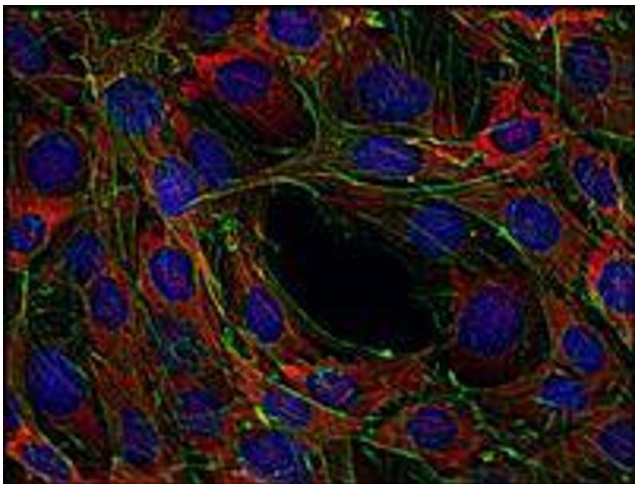
Western Blotting

Image 1.



Immunofluorescence

Image 2.



Immunofluorescence

Image 3.