

Datasheet for ABIN238535

**anti-Mammaglobin A antibody (Internal Region)**[Go to Product page](#)**1** Image

## Overview

Quantity:	100 µg
Target:	Mammaglobin A (SCGB2A2)
Binding Specificity:	Internal Region
Reactivity:	Human
Host:	Goat
Clonality:	Polyclonal
Conjugate:	This Mammaglobin A antibody is un-conjugated
Application:	Immunohistochemistry (IHC), ELISA

## Product Details

Purpose:	Mammaglobin A / SCGB2A2
Immunogen:	Peptide with sequence C-NPQVSKTEYKEL, from the internal region of the protein sequence according to NP_002402.1.
Sequence:	NPQVSKTEYK EL
Isotype:	IgG
Cross-Reactivity:	Human
Purification:	Purified from goat serum by ammonium sulphate precipitation followed by antigen affinity chromatography using the immunizing peptide.
Grade:	Verified

## Target Details

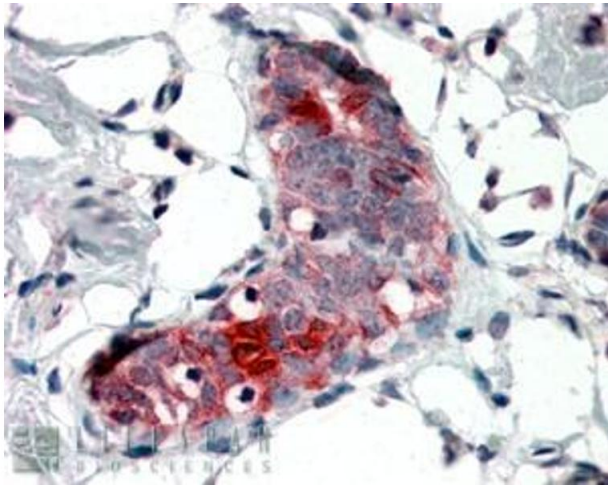
Target:	Mammaglobin A (SCGB2A2)
Alternative Name:	SCGB2A2 ( <a href="#">SCGB2A2 Products</a> )
Background:	SCGB2A2, secretoglobin, family 2A, member 2 , HGNC:7050, MGB1, UGB2, MGC71974, mammaglobin 1, mammaglobin A
Gene ID:	4250
NCBI Accession:	<a href="#">NP_002402</a>

## Application Details

Application Notes:	<p>Immunohistochemistry: In paraffin embedded Human Breast shows staining of cytoplasm in some acinar cells.. Recommended concentration, 4-6 µg/mL.</p> <p>Western Blot: Not yet tested - our routinely used western blotting protocol does not allow detection of proteins as small as the calculated size of 10.5 kDa according to NP_002402.1. Therefore we cannot recommend an optimal concentration and the product i</p> <p>Peptide ELISA: antibody detection limit dilution 1:32000.</p>
Restrictions:	For Research Use only

## Handling

Format:	Liquid
Concentration:	0.5 mg/mL
Buffer:	Supplied at 0.5 mg/mL in Tris saline, 0.02 % sodium azide, pH 7.3 with 0.5 % bovine serum albumin.
Preservative:	Sodium azide
Precaution of Use:	This product contains Sodium azide: a POISONOUS AND HAZARDOUS SUBSTANCE which should be handled by trained staff only.
Handling Advice:	Minimize freezing and thawing.
Storage:	-20 °C
Storage Comment:	Aliquot and store at -20°C, with minimal freeze/thawing. A working aliquot may be refrigerated at 4°C for a few weeks and still remain viable.



#### Immunohistochemistry

**Image 1.** ABIN238535 (4 $\mu$ g/ml) staining of paraffin embedded Human Breast. Steamed antigen retrieval with citrate buffer pH 6, AP-staining.