

Datasheet for ABIN238536

anti-Arylsulfatase A antibody (Internal Region)

6 Images

4 Publications

[Go to Product page](#)

Overview

Quantity:	100 µg
Target:	Arylsulfatase A (ARSA)
Binding Specificity:	Internal Region
Reactivity:	Human, Mouse, Rat
Host:	Goat
Clonality:	Polyclonal
Conjugate:	This Arylsulfatase A antibody is un-conjugated
Application:	Western Blotting (WB), ELISA, Immunohistochemistry (IHC), Flow Cytometry (FACS), Immunofluorescence (IF)

Product Details

Purpose:	Arylsulfatase A
Immunogen:	Peptide with sequence C-YDLSKDPGENYN, from the internal region of the protein sequence according to NP_000478.2.
Sequence:	YDLSKDPGEN YN
Isotype:	IgG
Cross-Reactivity:	Human, Mouse, Rat
Purification:	Purified from goat serum by ammonium sulphate precipitation followed by antigen affinity chromatography using the immunizing peptide.
Grade:	Verified

Target Details

Target:	Arylsulfatase A (ARSA)
Alternative Name:	ARSA (ARSA Products)
Background:	ARSA, arylsulfatase A, MLD, cerebroside-sulfatase, cerebroside 3-sulfatase
Gene ID:	410, 11883, 315222
NCBI Accession:	NP_000478

Application Details

Application Notes:	<p>Immunohistochemistry: Paraffin embedded Human Brain (Cortex) and Testis. Recommended concentration: 5 µg/mL.</p> <p>Western Blot: Approx 60-65Da band observed in Mouse and Rat Testis lysates (calculated MW of 53.7 kDa according to Mouse NP_033843.2 and Rat NP_001030105.2.). This molecular weight is routinely observed by other sources and was successfully blocked by inc</p> <p>Peptide ELISA: antibody detection limit dilution 1:32000.</p>
Comment:	<p>Immunofluorescence: Strong expression of the protein seen in the Golgi apparatus of HeLa cells. Recommended concentration: 10µg/ml.</p> <p>Flow Cytometry: Flow cytometric analysis of HeLa cells. Recommended concentration: 10u</p>
Restrictions:	For Research Use only

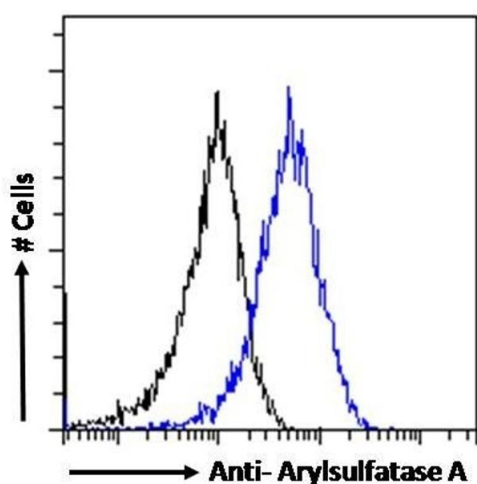
Handling

Format:	Liquid
Concentration:	0.5 mg/mL
Buffer:	Supplied at 0.5 mg/mL in Tris saline, 0.02 % sodium azide, pH 7.3 with 0.5 % bovine serum albumin.
Preservative:	Sodium azide
Precaution of Use:	This product contains Sodium azide: a POISONOUS AND HAZARDOUS SUBSTANCE which should be handled by trained staff only.
Handling Advice:	Minimize freezing and thawing.
Storage:	-20 °C
Storage Comment:	Aliquot and store at -20°C, with minimal freeze/thawing. A working aliquot may be refrigerated at 4°C for a few weeks and still remain viable.

Publications

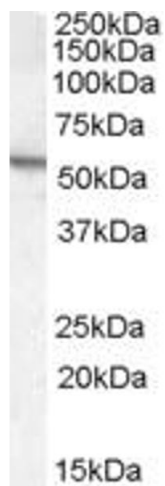
- Product cited in: Kanbe, Kamijo, Nakajima, Tanaka, Sugiyama, Wang, Fang, Hara, Gonzalez, Aoyama: "Chronic ethanol consumption decreases serum sulfatide levels by suppressing hepatic cerebroside sulfotransferase expression in mice." in: **Archives of toxicology**, Vol. 88, Issue 2, pp. 367-79, (2014) ([PubMed](#)).
- Kimura, Nakajima, Kamijo, Tanaka, Wang, Hara, Sugiyama, Tanaka, Gonzalez, Aoyama: "Hepatic Cerebroside Sulfotransferase Is Induced by PPAR γ Activation in Mice." in: **PPAR research**, Vol. 2012, pp. 174932, (2012) ([PubMed](#)).
- Kiebish, Young, Lehman, Han: "Chronic caloric restriction attenuates a loss of sulfatide content in PGC-1 β ^{-/-} mouse cortex: a potential lipidomic role of PGC-1 β in neurodegeneration." in: **Journal of lipid research**, Vol. 53, Issue 2, pp. 273-81, (2012) ([PubMed](#)).
- Zhang, Nakajima, Kamijo, Li, Hu, Kannagi, Kyogashima, Aoyama, Hara: "Acute kidney injury induced by protein-overload nephropathy down-regulates gene expression of hepatic cerebroside sulfotransferase in mice, resulting in reduction of liver and serum sulfatides." in: **Biochemical and biophysical research communications**, Vol. 390, Issue 4, pp. 1382-8, (2009) ([PubMed](#)).

Images



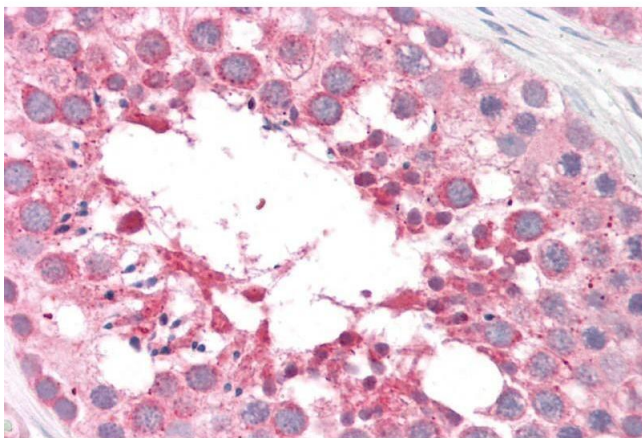
Flow Cytometry

Image 1. ABIN238536 Flow cytometric analysis of paraformaldehyde fixed HeLa cells (blue line), permeabilized with 0.5 % Triton. Primary incubation 1hr (10 μ g/mL) followed by Alexa Fluor 488 secondary antibody (1 μ g/mL). IgG control: Unimmunized goat IgG (black line) fol



Western Blotting

Image 2. ABIN238536 (0.5µg/ml) staining of Mouse Testis lysate (35µg protein in RIPA buffer). Detected by chemiluminescence.



Immunohistochemistry

Image 3. ABIN238536 (5µg/ml) staining of paraffin embedded Human Testis. Steamed antigen retrieval with citrate buffer pH 6, AP-staining.

Please check the [product details page](#) for more images. Overall 6 images are available for ABIN238536.