

Datasheet for ABIN238538

anti-C14orf169 + NO66 antibody (Internal Region)



[Go to Product page](#)

1 Image

Overview

Quantity:	100 µg
Target:	C14orf169 + NO66 (C14orf169)
Binding Specificity:	Internal Region
Reactivity:	Human
Host:	Goat
Clonality:	Polyclonal
Conjugate:	This C14orf169 + NO66 antibody is un-conjugated
Application:	Western Blotting (WB), ELISA

Product Details

Purpose:	C14orf169 / NO66
Immunogen:	Peptide with sequence C-GAQHSDSKDPR, from the internal region of the protein sequence according to NP_078920.2.
Sequence:	GAQHSDSKDP R
Isotype:	IgG
Cross-Reactivity:	Human, Mouse, Rat
Purification:	Purified from goat serum by ammonium sulphate precipitation followed by antigen affinity chromatography using the immunizing peptide.
Grade:	Verified

Target Details

Target:	C14orf169 + NO66 (C14orf169)
Alternative Name:	C14orf169 (C14orf169 Products)
Background:	C14orf169, NO66, chromosome 14 open reading frame 169, FLJ21802, MAPJD
Gene ID:	79697, 71952
NCBI Accession:	NP_078920

Application Details

Application Notes:	Western Blot: Approx 70 kDa band observed in lysates of cell line A431 (calculated MW of 71.1 kDa according to NP_078920.2). Recommended concentration: 0.3-1 µg/mL. An additional band of unknown identity was also consistently observed at 45 kDa. This band Peptide ELISA: antibody detection limit dilution 1:64000.
Restrictions:	For Research Use only

Handling

Format:	Liquid
Concentration:	0.5 mg/mL
Buffer:	Supplied at 0.5 mg/mL in Tris saline, 0.02 % sodium azide, pH 7.3 with 0.5 % bovine serum albumin.
Preservative:	Sodium azide
Precaution of Use:	This product contains Sodium azide: a POISONOUS AND HAZARDOUS SUBSTANCE which should be handled by trained staff only.
Handling Advice:	Minimize freezing and thawing.
Storage:	-20 °C
Storage Comment:	Aliquot and store at -20°C, with minimal freeze/thawing. A working aliquot may be refrigerated at 4°C for a few weeks and still remain viable.

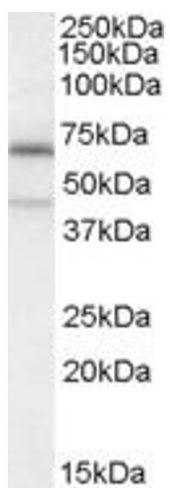


Image 1. ABIN238538 (0.3µg/ml) staining of A431 cell lysate (35µg protein in RIPA buffer). Primary incubation was 1 hour. Detected by chemiluminescence.