

Datasheet for ABIN238540
anti-CK1 epsilon antibody (C-Term)

6 Images

[Go to Product page](#)

Overview

Quantity:	100 µg
Target:	CK1 epsilon (CSNK1E)
Binding Specificity:	C-Term
Reactivity:	Human
Host:	Goat
Clonality:	Polyclonal
Conjugate:	This CK1 epsilon antibody is un-conjugated
Application:	Western Blotting (WB), ELISA, Immunohistochemistry (IHC), Immunofluorescence (IF), Flow Cytometry (FACS)

Product Details

Purpose:	CSNK1E
Immunogen:	Peptide with sequence C-PASQTSVPFDHLGK, from the C Terminus of the protein sequence according to NP_001885.1, NP_689407.1.
Sequence:	PASQTSVPFD HLGK
Isotype:	IgG
Cross-Reactivity:	Dog, Human, Mouse, Rat
Purification:	Purified from goat serum by ammonium sulphate precipitation followed by antigen affinity chromatography using the immunizing peptide.
Grade:	Verified

Target Details

Target:	CK1 epsilon (CSNK1E)
Alternative Name:	CSNK1E (CSNK1E Products)
Background:	CSNK1E, casein kinase 1, epsilon, RP1-506.1, HCKIE, MGC10398 , CKI-epsilon, OTTHUMP00000063258, OTTHUMP00000063263, casein kinase 1 epsilon, casein kinase I epsilon
Gene ID:	1454, 27373, 58822
NCBI Accession:	NP_001276841
Pathways:	Hedgehog Signaling , M Phase

Application Details

Application Notes:	<p>Immunohistochemistry: Paraffin embedded Human Tonsil. Recommended concentration: 5 µg/mL.</p> <p>Western Blot: Approx 48 kDa band observed in nuclear lysates of cell lines A431 and HeLa, and approx 45 kDa in nuclear lysates of cell line K562 (calculated MW of 47.3 kDa according to NP_001276841.1). Recommended concentration: 0.3-1 µg/mL. Primary incubation</p> <p>Peptide ELISA: antibody detection limit dilution 1:32000.</p>
Comment:	<p>Immunofluorescence: Strong expression of the protein seen in the cytoplasm of HeLa and A431 cells. Recommended concentration: 10 µg/mL.</p> <p>Flow Cytometry: Flow cytometric analysis of A431 cells. Recommended concentration:</p>
Restrictions:	For Research Use only

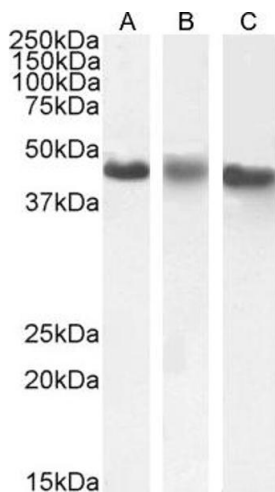
Handling

Format:	Liquid
Concentration:	0.5 mg/mL
Buffer:	Supplied at 0.5 mg/mL in Tris saline, 0.02 % sodium azide, pH 7.3 with 0.5 % bovine serum albumin.
Preservative:	Sodium azide
Precaution of Use:	This product contains Sodium azide: a POISONOUS AND HAZARDOUS SUBSTANCE which should be handled by trained staff only.
Handling Advice:	Minimize freezing and thawing.

Handling

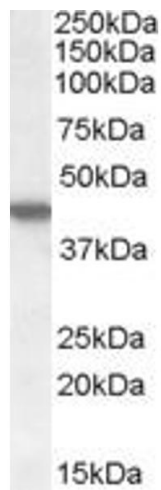
Storage:	-20 °C
Storage Comment:	Aliquot and store at -20°C, with minimal freeze/thawing. A working aliquot may be refrigerated at 4°C for a few weeks and still remain viable.

Images



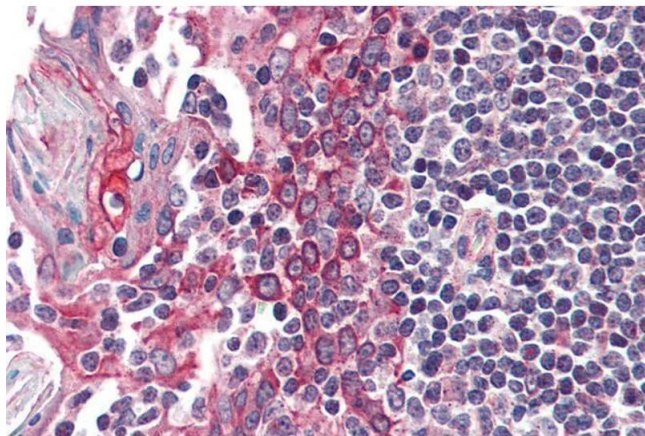
Western Blotting

Image 1. ABIN238540 (1 µg/mL) staining of A431(A), HeLa (B) and K562 (C) nuclear cell lysate (35 µg protein in RIPA buffer). Detected by chemiluminescence.



Western Blotting

Image 2. ABIN238540 (1µg/ml) staining of HEK293 cell lysate (35µg protein in RIPA buffer). Detected by chemiluminescence.



Immunohistochemistry

Image 3. ABIN238540 (5µg/ml) staining of paraffin embedded Human Tonsil. Steamed antigen retrieval with citrate buffer Ph 6, AP-staining.

Please check the [product details page](#) for more images. Overall 6 images are available for ABIN238540.