



Datasheet for ABIN238541

anti-KCNJ11 antibody (Internal Region)



[Go to Product page](#)

2 Images

Overview

Quantity:	100 µg
Target:	KCNJ11
Binding Specificity:	Internal Region
Reactivity:	Human
Host:	Goat
Clonality:	Polyclonal
Conjugate:	This KCNJ11 antibody is un-conjugated
Application:	Western Blotting (WB), ELISA, Immunohistochemistry (IHC)

Product Details

Purpose:	KCNJ11 / KATP /
Immunogen:	Peptide with sequence C-AEDPAKPRYRARQ, from the internal region (near the N Terminus) of the protein sequence according to NP_000516.3.
Sequence:	AEDPAKPRYR ARQ
Isotype:	IgG
Specificity:	This antibody is expected to recognise isoform 1 (NP_000516.3) only.
Cross-Reactivity:	Human
Purification:	Purified from goat serum by ammonium sulphate precipitation followed by antigen affinity chromatography using the immunizing peptide.
Grade:	Verified

Target Details

Target:	KCNJ11
Alternative Name:	KCNJ11 (KCNJ11 Products)
Background:	KCNJ11, IKATP, potassium inwardly-rectifying channel, subfamily J, member 11, BIR, HHF2, KIR6.2, MGC133230, PPHI, TNDM3, ATP-sensitive inward rectifier potassium channel 11, beta-cell inward rectifier subunit, inwardly rectifying potassium channel KIR6.2,
Gene ID:	3767
NCBI Accession:	NP_000516
Pathways:	Negative Regulation of Hormone Secretion

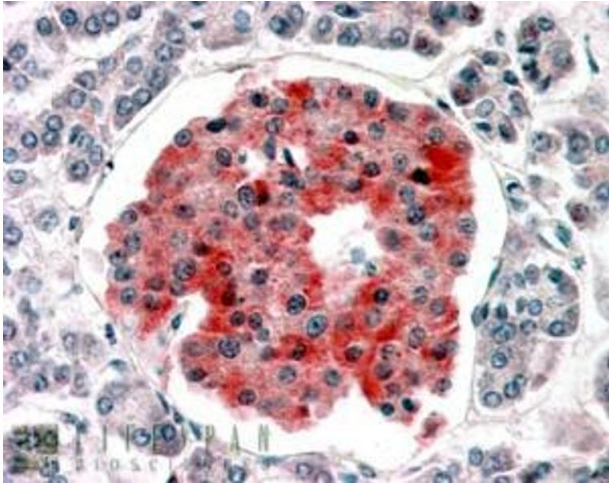
Application Details

Application Notes:	Immunohistochemistry: In paraffin embedded Human Pancreas shows variable staining across the islet of Langerhans. Recommended concentration, 3-5 µg/mL. Western Blot: Approx 45-48 kDa band observed in Human Skeletal Muscle lysates (calculated MW of 43.5 kDa according to NP_000516.3). Recommended concentration: 0.1-0.3 µg/mL. Peptide ELISA: antibody detection limit dilution 1:32000.
--------------------	---

Restrictions:	For Research Use only
---------------	-----------------------

Handling

Format:	Liquid
Concentration:	0.5 mg/mL
Buffer:	Supplied at 0.5 mg/mL in Tris saline, 0.02 % sodium azide, pH 7.3 with 0.5 % bovine serum albumin.
Preservative:	Sodium azide
Precaution of Use:	This product contains Sodium azide: a POISONOUS AND HAZARDOUS SUBSTANCE which should be handled by trained staff only.
Handling Advice:	Minimize freezing and thawing.
Storage:	-20 °C
Storage Comment:	Aliquot and store at -20°C, with minimal freeze/thawing. A working aliquot may be refrigerated at 4°C for a few weeks and still remain viable.



Immunohistochemistry

Image 1. ABIN238541 (3.8µg/ml) staining of paraffin embedded Human Pancreas. Steamed antigen retrieval with citrate buffer pH 6, AP-staining.

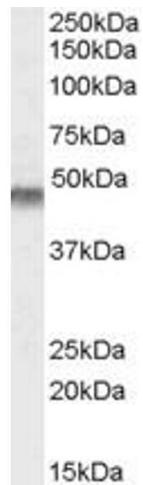


Image 2. ABIN238541 (0.1µg/ml) staining of Human Muscle lysate (35µg protein in RIPA buffer). Primary incubation was 1 hour. Detected by chemiluminescence.