

Datasheet for ABIN238555
anti-PLA2G1B antibody (C-Term)

2 Images

[Go to Product page](#)

Overview

Quantity:	100 µg
Target:	PLA2G1B
Binding Specificity:	C-Term
Reactivity:	Human
Host:	Goat
Clonality:	Polyclonal
Conjugate:	This PLA2G1B antibody is un-conjugated
Application:	Western Blotting (WB), ELISA

Product Details

Purpose:	PLA2G1B
Immunogen:	Peptide with sequence NKAHKNLDTKKYCQS, from the C Terminus of the protein sequence according to NP_000919.1.
Sequence:	NKAHKNLDTK KYCQS
Isotype:	IgG
Cross-Reactivity:	Dog, Human
Purification:	Purified from goat serum by ammonium sulphate precipitation followed by antigen affinity chromatography using the immunizing peptide.
Grade:	Verified

Target Details

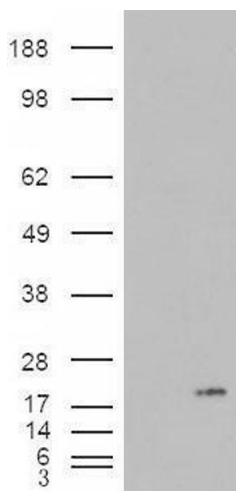
Target:	PLA2G1B
Alternative Name:	PLA2G1B (PLA2G1B Products)
Background:	PLA2G1B, phospholipase A2, group IB (pancreas), MGC119834, MGC119835, PLA2, PLA2A, PPLA2, phospholipase A2, group IB,
Gene ID:	5319, 18778, 29526
NCBI Accession:	NP_000919
Pathways:	Inositol Metabolic Process , VEGF Signaling

Application Details

Application Notes:	Western Blot: Approx. 17-18 kDa band observed in Human Pancreas lysates (calculated MW of 16.4 kDa according to NP_000919.1). In transfected HEK293 transiently expressing PLA2G1B a band of approx. 18 kDa is observed. This band is not observed in the non-tra Peptide ELISA: antibody detection limit dilution 1:64000.
Restrictions:	For Research Use only

Handling

Format:	Liquid
Concentration:	0.5 mg/mL
Buffer:	Supplied at 0.5 mg/mL in Tris saline, 0.02 % sodium azide, pH 7.3 with 0.5 % bovine serum albumin.
Preservative:	Sodium azide
Precaution of Use:	This product contains Sodium azide: a POISONOUS AND HAZARDOUS SUBSTANCE which should be handled by trained staff only.
Handling Advice:	Minimize freezing and thawing.
Storage:	-20 °C
Storage Comment:	Aliquot and store at -20°C, with minimal freeze/thawing. A working aliquot may be refrigerated at 4°C for a few weeks and still remain viable.



Western Blotting

Image 1. HEK293 overexpressing PLA2G1B (ABIN5381921) and probed with ABIN238555 (mock transfection in first lane).

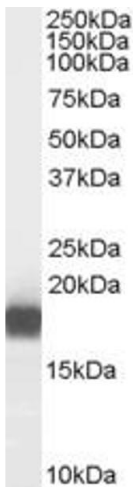


Image 2. ABIN238555 (0.01µg/ml) staining of Human Pancreas lysate (35µg protein in RIPA buffer). Primary incubation was 1 hour. Detected by chemiluminescence.