

Datasheet for ABIN238558
anti-KCNJ6 antibody (C-Term)[Go to Product page](#)

2 Images

Overview

Quantity:	100 µg
Target:	KCNJ6
Binding Specificity:	C-Term
Reactivity:	Human
Host:	Goat
Clonality:	Polyclonal
Conjugate:	This KCNJ6 antibody is un-conjugated
Application:	Western Blotting (WB), ELISA

Product Details

Purpose:	GIRK2 / KCNJ6
Immunogen:	Peptide with sequence C-SSKLNQHAELET, from the C Terminus of the protein sequence according to NP_002231.1.
Sequence:	SSKLNQHAELET
Isotype:	IgG
Cross-Reactivity:	Human, Mouse, Rat
Purification:	Purified from goat serum by ammonium sulphate precipitation followed by antigen affinity chromatography using the immunizing peptide.
Grade:	Verified

Target Details

Target:	KCNJ6
Alternative Name:	KCNJ6 (KCNJ6 Products)
Background:	KCNJ6, GIRK2, potassium inwardly-rectifying channel, subfamily J, member 6, BIR1, KATP2, KCNJ7, KIR3.2, MGC126596, hiGIRK2, G protein-activated inward rectifier potassium channel 2, inward rectifier potassium channel KIR3.2, potassium inwardly-
Gene ID:	3763, 16522, 25743
NCBI Accession:	NP_002231

Application Details

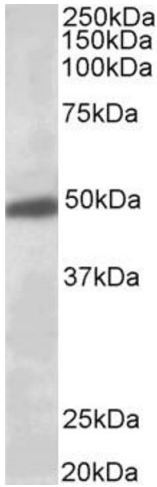
Application Notes:	Western Blot: Approx 48 kDa band observed in Human Brain (Hippocampus and Substantia Nigra) lysates (calculated MW of 48.5 kDa according to NP_002231.1). Recommended concentration: 2-6 µg/mL. Primary incubation was 1 hour. Peptide ELISA: antibody detection limit dilution 1:32000.
Restrictions:	For Research Use only

Handling

Format:	Liquid
Concentration:	0.5 mg/mL
Buffer:	Supplied at 0.5 mg/mL in Tris saline, 0.02 % sodium azide, pH 7.3 with 0.5 % bovine serum albumin.
Preservative:	Sodium azide
Precaution of Use:	This product contains Sodium azide: a POISONOUS AND HAZARDOUS SUBSTANCE which should be handled by trained staff only.
Handling Advice:	Minimize freezing and thawing.
Storage:	-20 °C
Storage Comment:	Aliquot and store at -20°C, with minimal freeze/thawing. A working aliquot may be refrigerated at 4°C for a few weeks and still remain viable.



Image 1. ABIN238558 (1µg/ml) staining of Human Brain (Substantia Nigra) lysate (35µg protein in RIPA buffer). Primary incubation was 1 hour. Detected by chemiluminescence.



Western Blotting

Image 2. ABIN238558 (0.5µg/ml) staining of Human Brain (Substantia Nigra) lysate (35µg protein in RIPA buffer). Detected by chemiluminescence.