



Datasheet for ABIN238564  
**anti-ADORA1 antibody (C-Term)**



[Go to Product page](#)

2 Images

Overview

Quantity:	100 µg
Target:	ADORA1
Binding Specificity:	C-Term
Reactivity:	Human
Host:	Goat
Clonality:	Polyclonal
Conjugate:	This ADORA1 antibody is un-conjugated
Application:	Western Blotting (WB), ELISA, Flow Cytometry (FACS)

Product Details

Purpose:	Adenosine A1 receptor
Immunogen:	Peptide with sequence NDHFRCQPAPPIDED, from the C Terminus of the protein sequence according to NP_000665.1, NP_001041695.1.
Sequence:	NDHFRCQPAP P IDE D
Isotype:	IgG
Specificity:	This antibody is expected to recognise isoforms 1, 2 and 3.
Cross-Reactivity:	Human
Purification:	Purified from goat serum by ammonium sulphate precipitation followed by antigen affinity chromatography using the immunizing peptide.
Grade:	Verified

## Target Details

---

Target:	ADORA1
Alternative Name:	ADORA1 ( <a href="#">ADORA1 Products</a> )
Background:	ADORA1, adenosine A1 receptor, RDC7
Gene ID:	134, 11539, 29290
NCBI Accession:	<a href="#">NP_000665</a> , <a href="#">NP_001351994</a> , <a href="#">NP_001351995</a>
Pathways:	<a href="#">EGFR Signaling Pathway</a> , <a href="#">Negative Regulation of Hormone Secretion</a> , <a href="#">Synaptic Membrane</a>

## Application Details

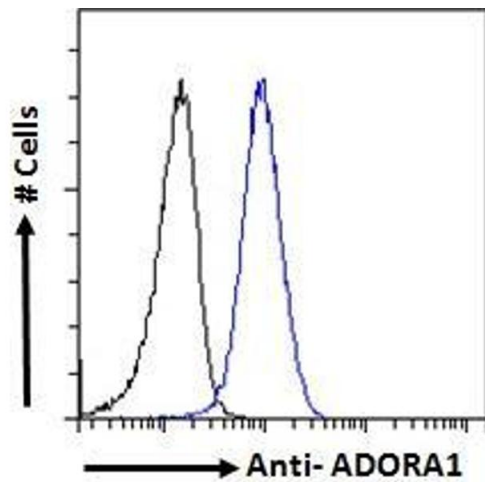
---

Application Notes:	Western Blot: Approx 35 kDa band observed in lysates of cell line HEK293 (calculated MW of 36.5 kDa according to NP_000665.1). Recommended concentration:0.1-0.3 µg/mL. Primary incubation 1 hour at room temperature. Peptide ELISA: antibody detection limit dilution 1:64000.
Comment:	<b>Flow Cytometry:</b> Flow cytometric analysis of HeLa cells. Recommended concentration: 10ug/ml.
Restrictions:	For Research Use only

## Handling

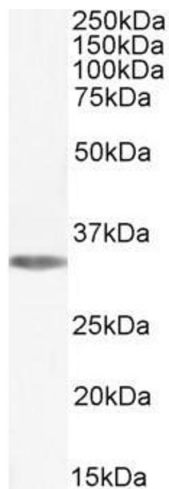
---

Format:	Liquid
Concentration:	0.5 mg/mL
Buffer:	Supplied at 0.5 mg/mL in Tris saline, 0.02 % sodium azide, pH 7.3 with 0.5 % bovine serum albumin.
Preservative:	Sodium azide
Precaution of Use:	This product contains Sodium azide: a POISONOUS AND HAZARDOUS SUBSTANCE which should be handled by trained staff only.
Handling Advice:	Minimize freezing and thawing.
Storage:	-20 °C
Storage Comment:	Aliquot and store at -20°C, with minimal freeze/thawing. A working aliquot may be refrigerated at 4°C for a few weeks and still remain viable.



### Flow Cytometry

**Image 1.** ABIN238564 Flow cytometric analysis of paraformaldehyde fixed HeLa cells (blue line), permeabilized with 0.5% Triton. Primary incubation 1hr (10ug/ml) followed by Alexa Fluor 488 secondary antibody (1ug/ml). IgG control: Unimmunized goat IgG (black line) followed by Alexa Fluor 488 secondary antibody.



### Western Blotting

**Image 2.** ABIN238564 (0.1µg/ml) staining of HEK293 cell lysate (35µg protein in RIPA buffer). Detected by chemiluminescence.