

Datasheet for ABIN238570  
**anti-ABHD4 antibody (Internal Region)**[Go to Product page](#)

## 1 Image

## Overview

Quantity:	100 µg
Target:	ABHD4
Binding Specificity:	Internal Region
Reactivity:	Human
Host:	Goat
Clonality:	Polyclonal
Conjugate:	This ABHD4 antibody is un-conjugated
Application:	ELISA, Immunohistochemistry (IHC)

## Product Details

Purpose:	ABHD4 (aa 177 to 187)
Immunogen:	Peptide with sequence C-RPTNPSEIRAP, from the internal region of the protein sequence according to NP_071343.2.
Sequence:	RPTNPSEIRA P
Isotype:	IgG
Cross-Reactivity:	Dog, Human, Mouse
Purification:	Purified from goat serum by ammonium sulphate precipitation followed by antigen affinity chromatography using the immunizing peptide.
Grade:	Verified

## Target Details

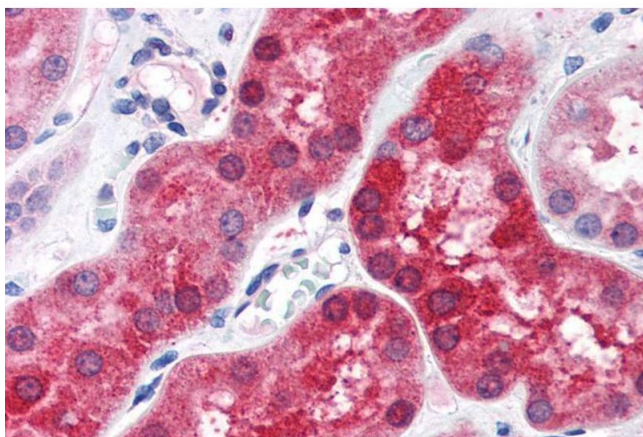
Target:	ABHD4
Alternative Name:	ABHD4 ( <a href="#">ABHD4 Products</a> )
Background:	ABHD4, abhydrolase domain containing 4, FLJ12816
Gene ID:	63874, 105501
NCBI Accession:	<a href="#">NP_071343</a>

## Application Details

Application Notes:	Immunohistochemistry: Paraffin embedded Human Kidney. Recommended concentration: 3.75 µg/mL. Western Blot: Preliminary experiments gave an approx 48 kDa band in Human Brain (Cerebellum, Cerebral Cortex and Frontal Cortex) lysates after 1 µg/mL antibody staining. Please note that currently we cannot find an explanation in the literature for the band. Peptide ELISA: antibody detection limit dilution 1:4000.
Restrictions:	For Research Use only

## Handling

Format:	Liquid
Concentration:	0.5 mg/mL
Buffer:	Supplied at 0.5 mg/mL in Tris saline, 0.02 % sodium azide, pH 7.3 with 0.5 % bovine serum albumin.
Preservative:	Sodium azide
Precaution of Use:	This product contains Sodium azide: a POISONOUS AND HAZARDOUS SUBSTANCE which should be handled by trained staff only.
Handling Advice:	Minimize freezing and thawing.
Storage:	-20 °C
Storage Comment:	Aliquot and store at -20°C, with minimal freeze/thawing. A working aliquot may be refrigerated at 4°C for a few weeks and still remain viable.



#### Immunohistochemistry

**Image 1.** ABIN238570 (3.75µg/ml) staining of paraffin embedded Human Kidney. Steamed antigen retrieval with citrate buffer pH 6, AP-staining.