

## Datasheet for ABIN238571 anti-MEPCE antibody (Internal Region)

[Go to Product page](#)

### 2 Images

#### Overview

Quantity:	100 µg
Target:	MEPCE
Binding Specificity:	Internal Region
Reactivity:	Human, Rat
Host:	Goat
Clonality:	Polyclonal
Conjugate:	This MEPCE antibody is un-conjugated
Application:	Western Blotting (WB), ELISA, Immunohistochemistry (IHC)

#### Product Details

Purpose:	MEPCE
Immunogen:	KQQRKFQYGN YCK
Sequence:	KQQRKFQYGN YCK
Isotype:	IgG
Cross-Reactivity:	Human, Mouse, Rat
Purification:	Purified from goat serum by ammonium sulphate precipitation followed by antigen affinity chromatography using the immunizing peptide.
Grade:	Verified

## Target Details

Target:	MEPCE
Alternative Name:	MEPCE ( <a href="#">MEPCE Products</a> )
Background:	MEPCE, methylphosphate capping enzyme, BCDIN3, FLJ20257, bin3, bicoid-interacting 3, bin3, bicoid-interacting 3, homolog
Gene ID:	56257
NCBI Accession:	<a href="#">NP_062552</a>
Pathways:	<a href="#">Chromatin Binding</a> , <a href="#">SARS-CoV-2 Protein Interactome</a> , <a href="#">The Global Phosphorylation Landscape of SARS-CoV-2 Infection</a>

## Application Details

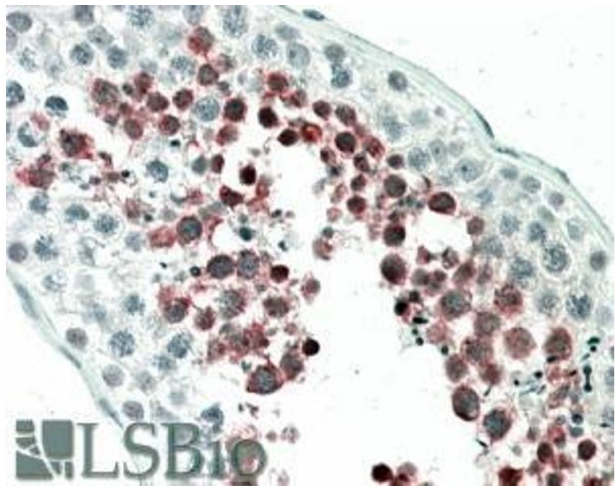
Application Notes:	<p>Immunohistochemistry: In paraffin embedded Human Testis shows staining of the spermatids.</p> <p>Recommended concentration: 5-10 µg/mL.</p> <p>Western Blot: Approx. 75 kDa band observed in Rat Testis lysates (calculated MW of 74.4 kDa according to Human NP_062552.2 and 75.3 kDa according to Rat XP_222048.4).</p> <p>Recommended concentration: 1-3 µg/mL. Primary incubation was 1 hour. Preliminary testing was</p> <p>Peptide ELISA: antibody detection limit dilution 1:2000.</p>
Restrictions:	For Research Use only

## Handling

Format:	Liquid
Concentration:	0.5 mg/mL
Buffer:	Supplied at 0.5 mg/mL in Tris saline, 0.02 % sodium azide, pH 7.3 with 0.5 % bovine serum albumin.
Preservative:	Sodium azide
Precaution of Use:	This product contains Sodium azide: a POISONOUS AND HAZARDOUS SUBSTANCE which should be handled by trained staff only.
Handling Advice:	Minimize freezing and thawing.
Storage:	-20 °C
Storage Comment:	Aliquot and store at -20°C, with minimal freeze/thawing. A working aliquot may be refrigerated

at 4°C for a few weeks and still remain viable.

Images



Immunohistochemistry

**Image 1.** ABIN238571 (5µg/ml) staining of paraffin embedded Human Testis. Steamed antigen retrieval with citrate buffer pH 6, AP-staining.



Western Blotting

**Image 2.** ABIN238571 (1µg/ml) staining of Rat Testis lysate (35µg protein in RIPA buffer). Detected by chemiluminescence.