

Datasheet for ABIN238572
anti-CLEC16A antibody (Internal Region)[Go to Product page](#)

2 Images

Overview

Quantity:	100 µg
Target:	CLEC16A
Binding Specificity:	Internal Region
Reactivity:	Human
Host:	Goat
Clonality:	Polyclonal
Conjugate:	This CLEC16A antibody is un-conjugated
Application:	ELISA, Flow Cytometry (FACS), Immunofluorescence (IF)

Product Details

Purpose:	CLEC16A
Immunogen:	Peptide with sequence C-SLENQDKGGERP, from the internal region of the protein sequence according to NP_056041.1.
Sequence:	SLENQDKGGE RP
Isotype:	IgG
Cross-Reactivity:	Human, Mouse, Rat
Purification:	Purified from goat serum by ammonium sulphate precipitation followed by antigen affinity chromatography using the immunizing peptide.
Grade:	Verified

Target Details

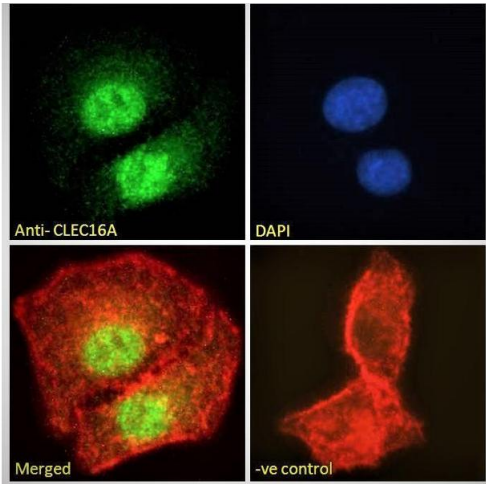
Target:	CLEC16A
Alternative Name:	CLEC16A (CLEC16A Products)
Background:	CLEC16A, C-type lectin domain family 16, member A, Gop-1, KIAA0350, MGC111457
Gene ID:	23274, 74374
NCBI Accession:	NP_056041 , NP_001230332

Application Details

Application Notes:	Western Blot: Preliminary experiments gave an approx 70 kDa band in Rat Testis lysates after 0.5 µg/mL antibody staining. This band was successfully blocked by incubation with the immunizing peptide. Primary incubation 1 hour at room temperature. Please no Peptide ELISA: antibody detection limit dilution 1:16000.
Comment:	Immunofluorescence: Strong expression of the protein seen in the nuclei and weak expression seen in the cytoplasm of A549 cells. Recommended concentration: 10µg/ml. Flow Cytometry: Flow cytometric analysis of A549 cell
Restrictions:	For Research Use only

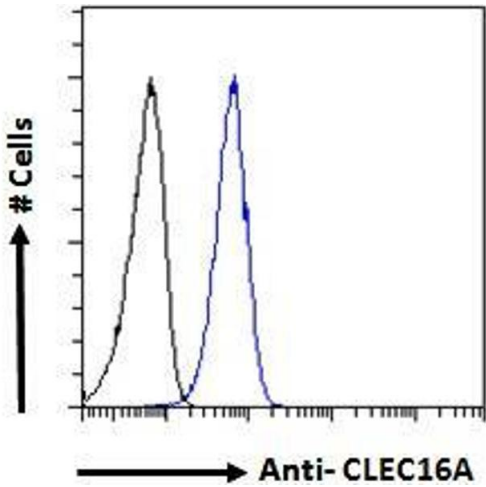
Handling

Format:	Liquid
Concentration:	0.5 mg/mL
Buffer:	Supplied at 0.5 mg/mL in Tris saline, 0.02 % sodium azide, pH 7.3 with 0.5 % bovine serum albumin.
Preservative:	Sodium azide
Precaution of Use:	This product contains Sodium azide: a POISONOUS AND HAZARDOUS SUBSTANCE which should be handled by trained staff only.
Handling Advice:	Minimize freezing and thawing.
Storage:	-20 °C
Storage Comment:	Aliquot and store at -20°C, with minimal freeze/thawing. A working aliquot may be refrigerated at 4°C for a few weeks and still remain viable.



Immunofluorescence

Image 1. ABIN238572 Immunofluorescence analysis of paraformaldehyde fixed A549 cells, permeabilized with 0.15% Triton. Primary incubation 1hr (10ug/ml) followed by Alexa Fluor 488 secondary antibody (2ug/ml), showing strong nuclear and weak cytoplasmic staining. Acti



Flow Cytometry

Image 2. ABIN238572 Flow cytometric analysis of paraformaldehyde fixed A549 cells (blue line), permeabilized with 0.5% Triton. Primary incubation 1hr (10ug/ml) followed by Alexa Fluor 488 secondary antibody (1ug/ml). IgG control: Unimmunized goat IgG (black line) fol