

Datasheet for ABIN238578
anti-SLC12A6 antibody (Internal Region)[Go to Product page](#)

2 Images

Overview

Quantity:	100 µg
Target:	SLC12A6
Binding Specificity:	Internal Region
Reactivity:	Human
Host:	Goat
Clonality:	Polyclonal
Conjugate:	This SLC12A6 antibody is un-conjugated
Application:	Western Blotting (WB), Immunohistochemistry (IHC), ELISA

Product Details

Purpose:	KCC3 / SLC12A6
Immunogen:	Peptide with sequence SRHIDVCSKTKE, from the internal region of the protein sequence according to NP_001035959.1, NP_001035960.1, NP_001035961.1, NP_001035962.1, NP_005126.1, NP_598408.1.
Sequence:	SRHIDVCSKT KE
Isotype:	IgG
Specificity:	This antibody is expected to recognise all reported isoforms (NP_598408.1, NP_005126.1, NP_001035959.1, NP_001035961.1, NP_001035962.1), Reported variants represent identical protein: NP_001035959.1, NP_001035960.1
Cross-Reactivity:	Human

Product Details

Purification: Purified from goat serum by ammonium sulphate precipitation followed by antigen affinity chromatography using the immunizing peptide.

Grade: Verified

Target Details

Target: SLC12A6

Alternative Name: SLC12A6 ([SLC12A6 Products](#))

Background: SLC12A6, KCC3, solute carrier family 12 (potassium/chloride transporters), member 6, ACCPN, DKFZP434D2135, KCC3A, KCC3B, agenesis of corpus callosum and peripheral neuropathy (Andermann syndrome), potassium chloride cotransporter 3, potassium chloride c

Gene ID: 9990

NCBI Accession: [NP_001035959](#), [NP_001035960](#), [NP_001035961](#), [NP_001035962](#), [NP_005126](#), [NP_598408](#)

Application Details

Application Notes: Immunohistochemistry: In paraffin embedded Human Heart shows staining of myocardial fibrils in transverse section. Recommended concentration, 2-4 µg/mL.

Western Blot: Approx 120 kDa band observed in Human Heart and Kidney lysates (calculated MW ranging 121-128 kDa according to NP_598408.1, NP_005126.1, NP_001035959.1, NP_001035960.1, NP_001035961.1, NP_001035962.1). Recommended concentration: 0.1-0.3 µg/mL

Peptide ELISA: antibody detection limit dilution 1:16000.

Restrictions: For Research Use only

Handling

Format: Liquid

Concentration: 0.5 mg/mL

Buffer: Supplied at 0.5 mg/mL in Tris saline, 0.02 % sodium azide, pH 7.3 with 0.5 % bovine serum albumin.

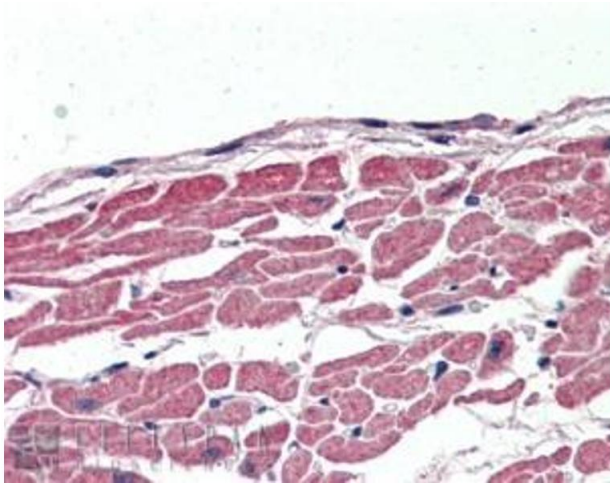
Preservative: Sodium azide

Precaution of Use: This product contains Sodium azide: a POISONOUS AND HAZARDOUS SUBSTANCE which should be handled by trained staff only.

Handling

Handling Advice:	Minimize freezing and thawing.
Storage:	-20 °C
Storage Comment:	Aliquot and store at -20°C, with minimal freeze/thawing. A working aliquot may be refrigerated at 4°C for a few weeks and still remain viable.

Images



Immunohistochemistry

Image 1. ABIN238578 (2.5µg/ml) staining of paraffin embedded Human Heart. Steamed antigen retrieval with citrate buffer pH 6, AP-staining.

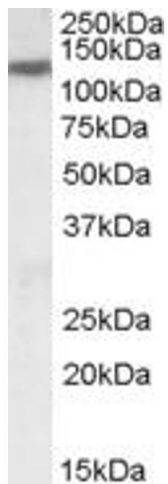


Image 2. ABIN238578 (0.1µg/ml) staining of Human Heart lysate (35µg protein in RIPA buffer). Primary incubation was 1 hour. Detected by chemiluminescence.