

Datasheet for ABIN238579
anti-LITAF antibody (Internal Region)[Go to Product page](#)

1 Image

Overview

Quantity:	100 µg
Target:	LITAF
Binding Specificity:	Internal Region
Reactivity:	Human
Host:	Goat
Clonality:	Polyclonal
Conjugate:	This LITAF antibody is un-conjugated
Application:	Immunohistochemistry (IHC), ELISA

Product Details

Purpose:	LITAF
Immunogen:	Peptide with sequence C-PDGKGMNPPSYTQ, from the internal region of the protein sequence according to NP_004853.2, NP_001129945.1.
Sequence:	PDGKGMNPPS YYTQ
Isotype:	IgG
Specificity:	This antibody is expected to crossreact with both reported isoforms (NP_004853.2, NP_001129945.1).
Cross-Reactivity:	Human, Mouse, Rat
Purification:	Purified from goat serum by ammonium sulphate precipitation followed by antigen affinity chromatography using the immunizing peptide.

Product Details

Grade: Verified

Target Details

Target: LITAF

Alternative Name: LITAF ([LITAF Products](#))

Background: LITAF, lipopolysaccharide-induced TNF factor, CMT1C, FLJ38636, MGC116698, MGC116700, MGC116701, MGC125274, MGC125275, MGC125276, PIG7, SIMPLE, TP53I7, LPS-induced TNF-alpha factor, small integral membrane protein of lysosome/late endosome, tumor protein

Gene ID: 9516, 56722, 65161

NCBI Accession: [NP_004853](#), [NP_001129945](#)

Pathways: [Cellular Response to Molecule of Bacterial Origin](#)

Application Details

Application Notes: Immunohistochemistry: Paraffin embedded Human Thymus. Recommended concentration: 6.5 µg/mL.
Western Blot: Preliminary experiments gave an approx 25 kDa band in Human Lymph Node lysates and in lysates of cell lines HeLa and HepG2 after 0.1 µg/mL antibody staining. Please note that currently we cannot find an explanation in the literature for the b
Peptide ELISA: antibody detection limit dilution 1:8000.

Restrictions: For Research Use only

Handling

Format: Liquid

Concentration: 0.5 mg/mL

Buffer: Supplied at 0.5 mg/mL in Tris saline, 0.02 % sodium azide, pH 7.3 with 0.5 % bovine serum albumin.

Preservative: Sodium azide

Precaution of Use: This product contains Sodium azide: a POISONOUS AND HAZARDOUS SUBSTANCE which should be handled by trained staff only.

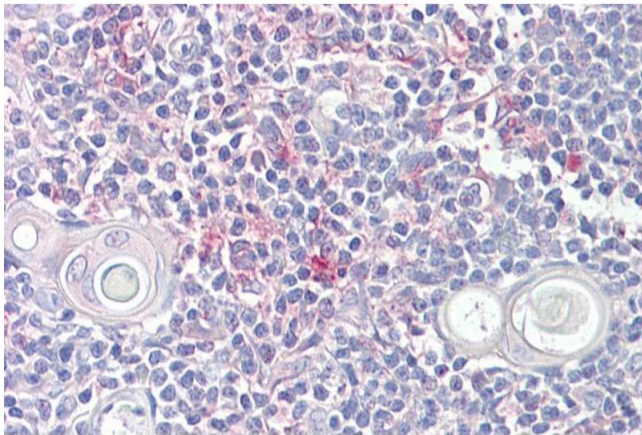
Handling Advice: Minimize freezing and thawing.

Handling

Storage: -20 °C

Storage Comment: Aliquot and store at -20°C, with minimal freeze/thawing. A working aliquot may be refrigerated at 4°C for a few weeks and still remain viable.

Images



Immunohistochemistry

Image 1. ABIN238579 (6.5µg/ml) staining of paraffin embedded Human Thymus. Steamed antigen retrieval with citrate buffer pH 6, AP-staining.