

Datasheet for ABIN238580
anti-RPL22 antibody (C-Term)

3 Images

[Go to Product page](#)

Overview

| | |
|----------------------|--------------------------------------|
| Quantity: | 100 µg |
| Target: | RPL22 |
| Binding Specificity: | C-Term |
| Reactivity: | Human |
| Host: | Goat |
| Clonality: | Polyclonal |
| Conjugate: | This RPL22 antibody is un-conjugated |
| Application: | Immunohistochemistry (IHC), ELISA |

Product Details

| | |
|-------------------|---------------------------------------------------------------------------------------------------------------------------------------|
| Purpose: | Ribosomal protein L22 |
| Immunogen: | Peptide with sequence C-SKESYELRYFQINQ, from the C Terminus of the protein sequence according to NP_000974.1. |
| Sequence: | SKESYELRYF QINQ |
| Isotype: | IgG |
| Cross-Reactivity: | Human, Mouse, Rat |
| Purification: | Purified from goat serum by ammonium sulphate precipitation followed by antigen affinity chromatography using the immunizing peptide. |
| Grade: | Verified |

Target Details

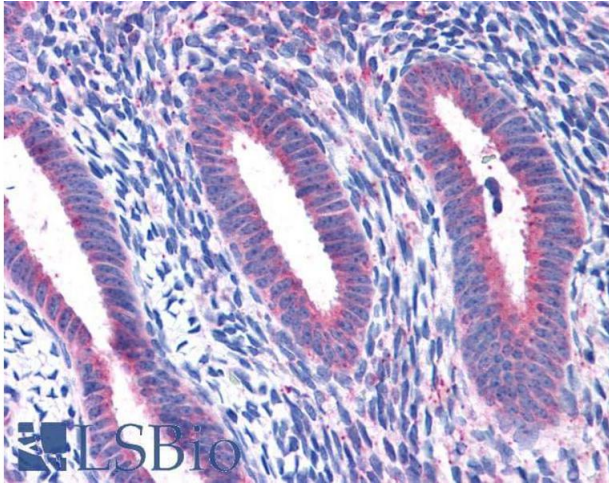
| | |
|-------------------|-----------------------------------------------------------------------------------------------------------------------------------------------------------------------------------------------------------------------------------------------------------------|
| Target: | RPL22 |
| Alternative Name: | RPL22 (RPL22 Products) |
| Background: | RPL22, ribosomal protein L22, EAP, HBP15, HBP15/L22, 60S ribosomal protein L22, EBER-associated protein, Epstein-Barr virus small RNA-associated protein, Epstein-Barr-encoded RNA-associated protein, heparin-binding protein 15, heparin-binding protein HBp1 |
| Gene ID: | 6146, 19934, 81768 |
| NCBI Accession: | NP_000974 |

Application Details

| | |
|--------------------|------------------------------------------------------------------------------------------------------------------------------------------------------------------------------------------------------------------------------------------------------------------------------------------------------------------------------------------------------------------------------------------------------------------------------------------------------------------------------------------------------------------------------------------------------------------------------------------------|
| Application Notes: | <p>Immunohistochemistry: In paraffin embedded Human Brain (Cortex) shows cytoplasm staining in neuronal bodies. Recommended concentration: 3-6 µg/mL. Paraffin embedded Human Thyroid, Uterus and Testis. Recommended concentration: 3.75 µg/mL.</p> <p>Western Blot: Preliminary experiments gave bands at approx 17-18 kDa and 25 kDa in Human Liver lysates after 0.5 µg/mL antibody staining. Please note that currently we cannot find an explanation in the literature for the bands we observe given the calculate</p> <p>Peptide ELISA: antibody detection limit dilution 1:16000.</p> |
| Restrictions: | For Research Use only |

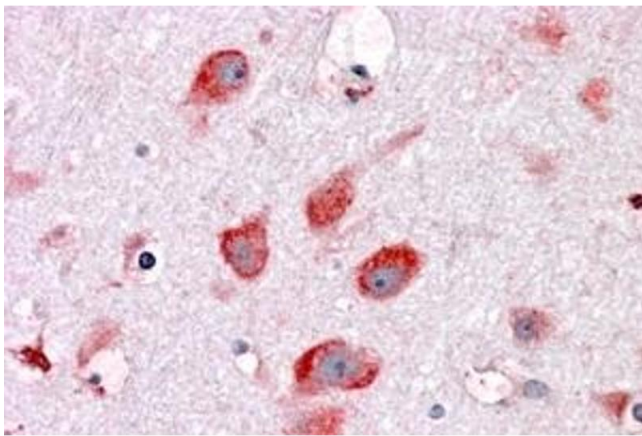
Handling

| | |
|--------------------|------------------------------------------------------------------------------------------------------------------------------------------------|
| Format: | Liquid |
| Concentration: | 0.5 mg/mL |
| Buffer: | Supplied at 0.5 mg/mL in Tris saline, 0.02 % sodium azide, pH 7.3 with 0.5 % bovine serum albumin. |
| Preservative: | Sodium azide |
| Precaution of Use: | This product contains Sodium azide: a POISONOUS AND HAZARDOUS SUBSTANCE which should be handled by trained staff only. |
| Handling Advice: | Minimize freezing and thawing. |
| Storage: | -20 °C |
| Storage Comment: | Aliquot and store at -20°C, with minimal freeze/thawing. A working aliquot may be refrigerated at 4°C for a few weeks and still remain viable. |



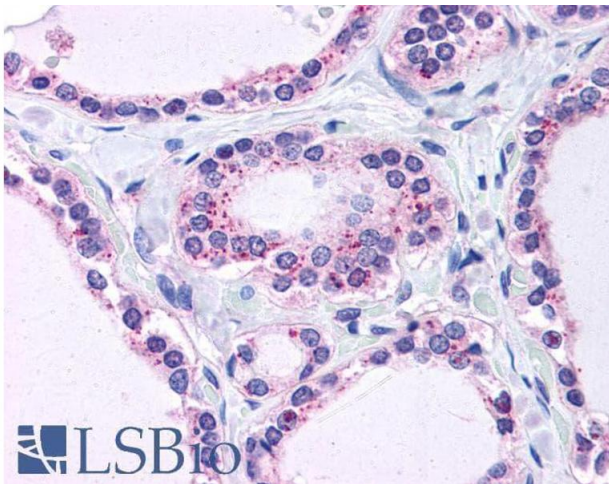
Immunohistochemistry

Image 1. ABIN238580 (3.75 µg/ml) staining of paraffin embedded Human Uterus. Steamed antigen retrieval with citrate buffer pH 6, AP-staining.



Immunohistochemistry

Image 2. ABIN238580 (3.8 µg/ml) staining of paraffin embedded Human Cortex. Steamed antigen retrieval with citrate buffer pH 6, AP-staining.



Immunohistochemistry

Image 3. ABIN238580 (3.75 µg/ml) staining of paraffin embedded Human Thyroid. Steamed antigen retrieval with citrate buffer pH 6, AP-staining.