



Datasheet for ABIN238594
anti-EPB41L2 antibody (Internal Region)



[Go to Product page](#)

6 Images

Overview

Quantity:	100 µg
Target:	EPB41L2
Binding Specificity:	Internal Region
Reactivity:	Human
Host:	Goat
Clonality:	Polyclonal
Conjugate:	This EPB41L2 antibody is un-conjugated
Application:	ELISA, Immunohistochemistry (IHC), Immunofluorescence (IF), Flow Cytometry (FACS)

Product Details

Purpose:	EPB41L2 / 4.1G (aa 593 to 604)
Immunogen:	Peptide with sequence C-RREVRSPKAPH, from the internal region of the protein sequence according to NP_001422.1.
Sequence:	RREVRSPKAPH
Isotype:	IgG
Specificity:	This antibody is reported to recognise all isoforms NP_001422.1 (iso a), NP_001129026.1 (iso b), NP_001186317.1 (iso c), NP_001239589.1 (iso d), NP_001337228.1 (iso e), NP_001337230.1 (iso f), NP_001337232.1 (iso g), NP_001337233.1 (iso h), NP_001337236.1
Cross-Reactivity:	Human
Purification:	Purified from goat serum by ammonium sulphate precipitation followed by antigen affinity

Product Details

chromatography using the immunizing peptide.

Grade: Verified

Target Details

Target: EPB41L2

Alternative Name: EPB41L2 ([EPB41L2 Products](#))

Background: EPB41L2, 4.1-G, erythrocyte membrane protein band 4.1-like 2, RP3-324N14.1, DKFZp781D1972, DKFZp781H1755, OTTHUMP00000040262, erythrocyte membrane protein band 4.1 like-protein 2

Gene ID: 2037

NCBI Accession: [NP_001422](#)

Application Details

Application Notes: Immunohistochemistry: Paraffin embedded Human Uterus and Colon. Recommended concentration: 2.5 µg/mL.
Western Blot: Preliminary testing showed bands at approx 110+40 kDa in Human Cerebellum lysates after 0.1 µg/mL antibody staining (calculated MW of 113 kDa according to NP_001422.1. These bands were successfully blocked by incubation with the immunizing peptide.
Peptide ELISA: antibody detection limit dilution 1:32000.

Comment: **Immunofluorescence:** Strong expression of the protein seen in the membranes of A431 and in the cell junctions of U2OS cells. Recommended concentration: 10µg/ml.
Flow Cytometry: Flow cytometric analysis of A431 cells. Re

Restrictions: For Research Use only

Handling

Format: Liquid

Concentration: 0.5 mg/mL

Buffer: Supplied at 0.5 mg/mL in Tris saline, 0.02 % sodium azide, pH 7.3 with 0.5 % bovine serum albumin.

Preservative: Sodium azide

Precaution of Use: This product contains Sodium azide: a POISONOUS AND HAZARDOUS SUBSTANCE which

Handling

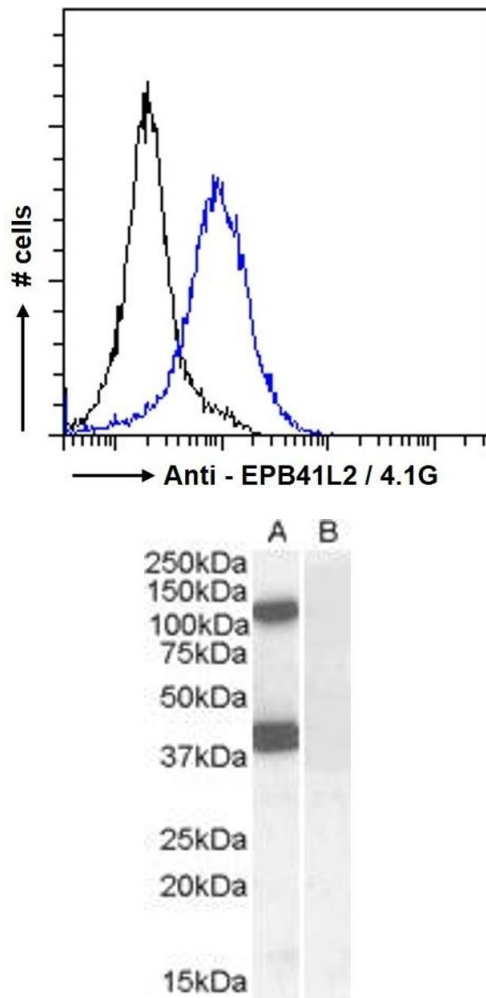
should be handled by trained staff only.

Handling Advice: Minimize freezing and thawing.

Storage: -20 °C

Storage Comment: Aliquot and store at -20°C, with minimal freeze/thawing. A working aliquot may be refrigerated at 4°C for a few weeks and still remain viable.

Images

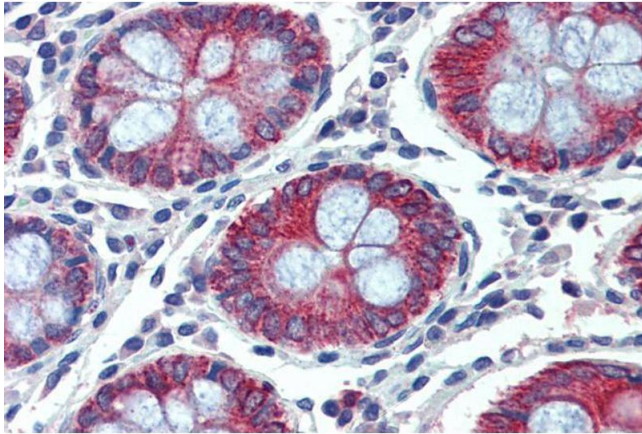


Flow Cytometry

Image 1. ABIN238594 Flow cytometric analysis of paraformaldehyde fixed A431 cells (blue line), permeabilized with 0.5 % Triton. Primary incubation 1hr (10 µg/mL) followed by Alexa Fluor 488 secondary antibody (1 µg/mL). IgG control: Unimmunized goat IgG (black line) fol

Western Blotting

Image 2. ABIN238594 (0.1µg/ml) staining of Human Brain (Cerebellum) lysate (35µg protein in RIPA buffer) with (B) and without (A) blocking with the immunising peptide. Detected by chemiluminescence.



Immunohistochemistry

Image 3. ABIN238594 (2.5µg/ml) staining of paraffin embedded Human Colon. Steamed antigen retrieval with citrate buffer pH 6, AP-staining.

Please check the [product details page](#) for more images. Overall 6 images are available for ABIN238594.