



[Go to Product page](#)

Datasheet for ABIN238595

anti-EPB41L4B antibody (Internal Region)

1 Image

Overview

| | |
|----------------------|---|
| Quantity: | 100 µg |
| Target: | EPB41L4B |
| Binding Specificity: | Internal Region |
| Reactivity: | Human |
| Host: | Goat |
| Clonality: | Polyclonal |
| Conjugate: | This EPB41L4B antibody is un-conjugated |
| Application: | ELISA, Immunohistochemistry (IHC) |

Product Details

| | |
|-------------------|---|
| Purpose: | EPB41L4B / EHM2 |
| Immunogen: | Peptide with sequence C-HNYQPQYHPNIHPSQ, from the internal region of the protein sequence according to NP_060894.2, NP_061987.3. |
| Sequence: | HNYQPQYHPN IHPSQ |
| Isotype: | IgG |
| Specificity: | This antibody is expected to recognise both reported isoforms (NP_060894.2, NP_061987.3). |
| Cross-Reactivity: | Human |
| Purification: | Purified from goat serum by ammonium sulphate precipitation followed by antigen affinity chromatography using the immunizing peptide. |
| Grade: | Verified |

Target Details

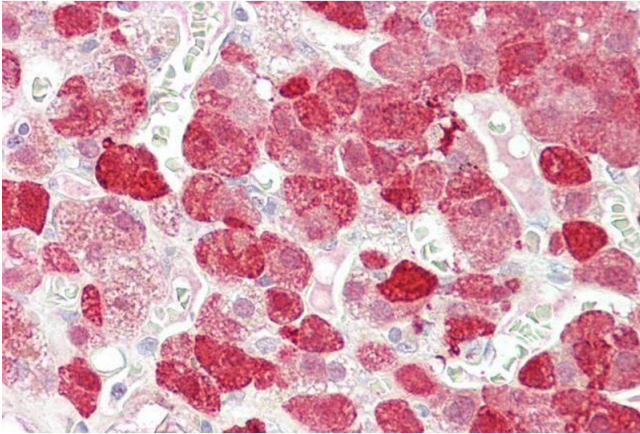
| | |
|-------------------|--|
| Target: | EPB41L4B |
| Alternative Name: | EPB41L4B (EPB41L4B Products) |
| Background: | EPB41L4B, erythrocyte membrane protein band 4.1 like 4B, CG1, DKFZp761N1814, EHM2, FLJ21596, EHM2, FERM-containing protein |
| Gene ID: | 54566 |
| NCBI Accession: | NP_060894 , NP_061987 |

Application Details

| | |
|--------------------|---|
| Application Notes: | <p>Immunohistochemistry: Paraffin embedded Human Adrenal Gland. Recommended concentration: 3.75 µg/mL.</p> <p>Western Blot: Preliminary experiments gave an approx 48 kDa band in Human Brain (Hippocampus, Cerebellar Cortex, Cerebellum) and Human Bone Marrow lysates after 0.3 µg/mL antibody staining. Please note that currently we cannot find an explanation in the li</p> <p>Peptide ELISA: antibody detection limit dilution 1:64000.</p> |
| Restrictions: | For Research Use only |

Handling

| | |
|--------------------|--|
| Format: | Liquid |
| Concentration: | 0.5 mg/mL |
| Buffer: | Supplied at 0.5 mg/mL in Tris saline, 0.02 % sodium azide, pH 7.3 with 0.5 % bovine serum albumin. |
| Preservative: | Sodium azide |
| Precaution of Use: | This product contains Sodium azide: a POISONOUS AND HAZARDOUS SUBSTANCE which should be handled by trained staff only. |
| Handling Advice: | Minimize freezing and thawing. |
| Storage: | -20 °C |
| Storage Comment: | Aliquot and store at -20°C, with minimal freeze/thawing. A working aliquot may be refrigerated at 4°C for a few weeks and still remain viable. |



Immunohistochemistry

Image 1. ABIN238595 (3.75µg/ml) staining of paraffin embedded Human Adrenal Gland. Steamed antigen retrieval with citrate buffer pH 6, AP-staining.